



tbs electronics



Operating your battery bank without good metering is like running your car without any gauges, although possible to do, it's always better to know how much fuel is left in the tank. Defining the amount of energy available in a battery is a complex task since battery age, discharge current and many other factors influence the actual battery capacity. The e-xpert lite uses the same very accurate measurement and calculation systems as the high-end e-xpert pro.

The e-xpert lite selectively displays voltage, charge- and discharge current, consumed amphotours and remaining battery capacity. Using a clear backlit LCD and an intuitive user interface, all parameters can be recalled with just a button press. A second battery input is also provided to monitor an auxiliary battery. A large bargraph delivers instant state of charge information.

Compared to the e-xpert pro, the e-xpert lite is a more basic instrument, perfectly suited for users focused on accurate state of charge readout and very easy setup.

Read your battery bank like a fuel gauge
Provides critical information about the status of your battery bank
Displays voltage, current, consumed amphotours and remaining battery capacity
Two battery inputs
Large backlit LC Display
Autosensing battery voltage inputs
Quick nut mounting construction
Programmable alarm relay
Shunt selection capability enables flexible system integration
Splash proof frontpanel
500 Amp shunt included
CE and e-mark certified
24 month warranty

Recreational vehicles
Solar power systems
Industrial systems
Forklifts
Mobile entertainment systems
Service vehicles
Marine applications
Remote homes

Professional connection kit
Quick connection kit

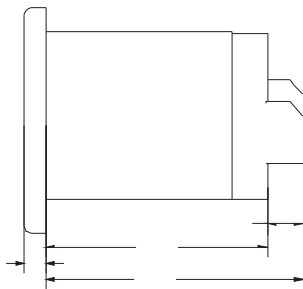
Parameter	e-xpert	
Supply voltage range	9..35VDC	
Supply current ¹⁾ :	@Vin=24VDC	7mA
	@Vin=12VDC	9mA
Input voltage range (auxiliary battery)	2..35VDC	
Input voltage range (main battery)	0..35VDC	
Input current range ²⁾	-999..+999A	
Battery capacity range	20..999Ah	
Operating temperature range	-20..+50°C	
Readout resolution :	voltage (0..35V)	± 0.1V
	current (0..100A)	± 0.1A
	current (100..999A)	± 1A
	amphours (0..100Ah)	± 0.1Ah
	amphours (100..999Ah)	± 1Ah
	state-of-charge (0..100%)	± 0.1%
Voltage measurement accuracy	± 0.3%	
Current measurement accuracy	± 0.4%	
Dimensions :	frontpanel	Ø64mm
	body diameter	Ø52mm
	total depth	79mm
	weight	95gr
Shunt dimensions :	footprint	45 x 87mm
	height	17mm (base) / 35mm (high current screws)
	weight	145gr
Protection class	IP20 (frontpanel only IP65)	
Complies with the following standards	EN61000-6-3 (EN55022), EN61000-6-2 (EN61000-2/3/4, EN61000-4-3), LVD 73/23/EEC (EN60335-1), e4-95/54/EC, RoHS 2002/95/EC	

Note: the given specifications are subject to change without notice.

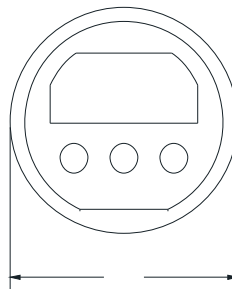
1) Measured with backlight and alarm relay turned off.

2) Depends on selected shunt. With standard delivered 500A/50mV shunt (350A continuous), the range is limited to -600..+600A.

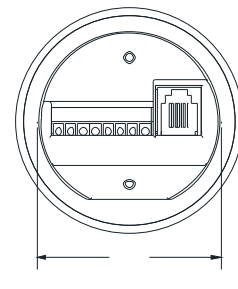
Sideview :



Frontview :



Rearview :



Mounting sequence :

