

Specification

Nominal Voltage	2V	
Nominal Capacity(8HR)	600.0AH	
Dimension	Length	300 ± 2mm (11.81 inches)
	Width	175 ± 2mm (6.89 inches)
	Container Height	330 ± 2mm (12.99 inches)
	Total Height (with Terminal)	350 ± 2mm (13.78 inches)
Approx Weight	Approx 36.5 kg (80.5lbs)	
Terminal	T11	
Container Material	ABS	
Rated Capacity	630.0 AH/63.0A	(10hr , 1.80V/cell, 25°C/77°F)
	600.0 AH/75.0A	(8hr, 1.75V/cell, 25°C/77°F)
	534.5 AH/106.9A	(5hr, 1.75V/cell, 25°C/77°F)
	468.9 AH/156.3A	(3hr, 1.75V/cell, 25°C/77°F)
	375.0 AH/375.0A	(1hr, 1.60V/cell, 25°C/77°F)
Max. Discharge Current	4800A (5s)	
Internal Resistance	Approx 0.55mΩ	
Operating Temp. Range	Discharge	-15 ~ 50°C (5 ~ 122°F)
	Charge	0 ~ 40°C (32 ~ 104°F)
	Storage	-15 ~ 40°C (5 ~ 104°F)
Nominal Operating Temp. Range	25 ± 3°C (77 ± 5°F)	
Cycle Use	Initial Charging Current less than 180.0A. Voltage	
	2.4V~2.5V at 25°C(77°F)Temp. Coefficient -5mV/°C	
Standby Use	No limit on Initial Charging Current Voltage	
	2.25V~2.3V at 25°C(77°F)Temp. Coefficient -3mV/°C	
Capacity affected by Temperature	40°C (104°F)	103%
	25°C (77°F)	100%
	0°C (32°F)	86%
Self Discharge	Leoch LPX series batteries may be stored for up to 6 months at 25°C(77°F) and then a freshening charge is required. For higher temperatures the time interval will be shorter.	



Applications

- ◆ UPS (High rate)
- ◆ High power backup supply
- ◆ Emergency power supply
- ◆ Starting system
- ◆ Power tools
- ◆ Emergency lighting
- ◆ Electric starting



Constant Current Discharge (Amperes) at 25 °C (77°F)

F.V/Time	5min	10min	15min	20min	30min	45min	1h	2h	3h	4h	5h	6h	8h	10h	20h
1.85V/cell	729.1	642.5	564.7	500.0	417.8	339.4	276.9	185.6	141.9	114.4	97.8	86.3	70.0	59.7	31.6
1.80V/cell	887.5	751.9	643.4	560.3	459.1	365.0	295.0	195.3	153.8	118.4	101.9	89.7	73.1	63.0	32.8
1.75V/cell	\	861.6	728.1	620.9	499.4	395.0	317.5	207.2	156.3	125.0	106.9	94.1	75.0	63.8	33.1
1.70V/cell	\	\	804.7	682.8	542.5	421.9	336.3	218.8	163.1	130.0	111.3	97.5	77.5	65.3	34.1
1.65V/cell	\	\	856.3	721.9	568.4	438.8	349.4	225.9	168.4	134.1	114.4	99.1	79.1	66.3	34.4
1.60V/cell	\	\	\	804.7	621.9	474.4	375.0	237.2	175.3	139.7	119.7	103.4	81.9	68.4	35.6

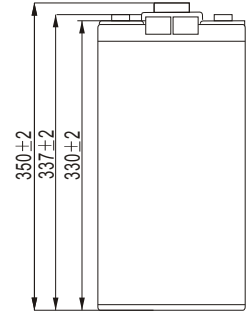
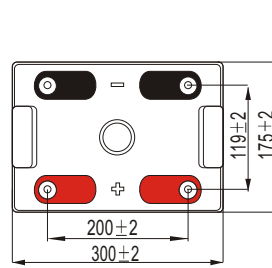
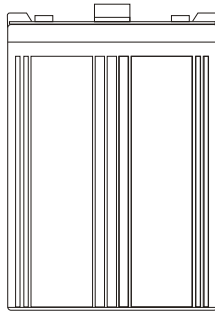
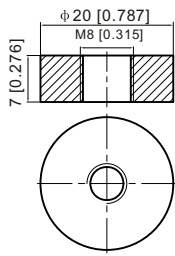
Constant Power Discharge (Watts) at 25 °C (77°F)

F.V/Time	5min	10min	15min	20min	30min	45min	1h	2h	3h	4h	5h	6h	8h	10h	20h
1.85V/cell	1340.6	1193.1	1059.4	947.5	800.6	655.6	537.2	362.2	278.1	224.7	192.8	170.3	138.8	118.8	63.1
1.80V/cell	1614.4	1380.0	1191.3	1046.3	866.3	699.7	569.1	378.8	299.7	231.3	199.7	176.6	144.7	124.8	65.3
1.75V/cell	\	1556.3	1331.3	1148.4	934.4	750.3	609.7	400.3	303.1	243.1	208.8	184.7	148.1	126.6	65.9
1.70V/cell	\	\	1450.9	1253.4	1009.7	798.4	643.1	421.6	315.9	252.8	216.9	190.9	152.8	129.4	67.5
1.65V/cell	\	\	1531.9	1315.0	1049.4	822.5	663.8	433.1	324.7	259.4	222.2	193.8	155.3	131.3	68.4
1.60V/cell	\	\	\	1450.3	1140.0	885.0	708.8	452.5	336.9	269.4	231.9	201.6	160.6	135.3	70.3

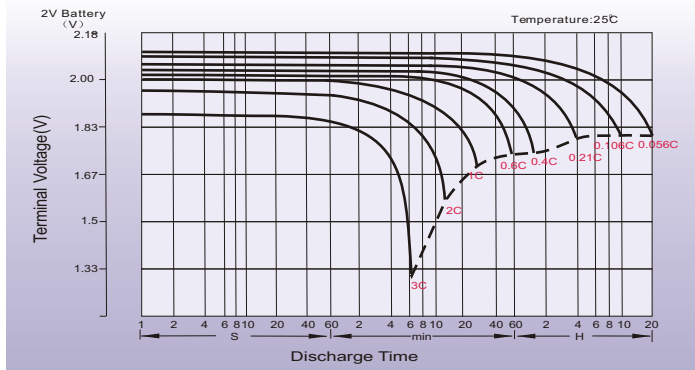
Dimensions

T11 Terminal

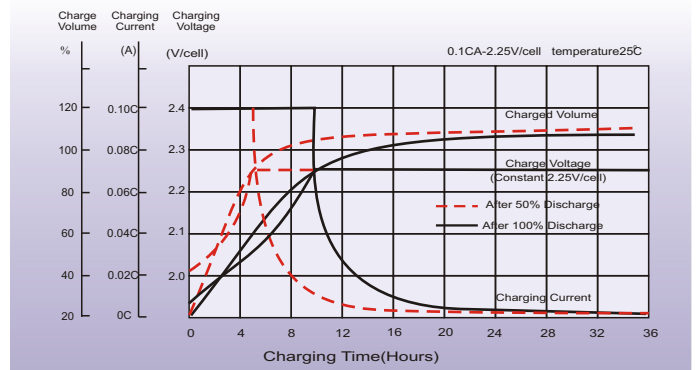
Unit: mm [inches]



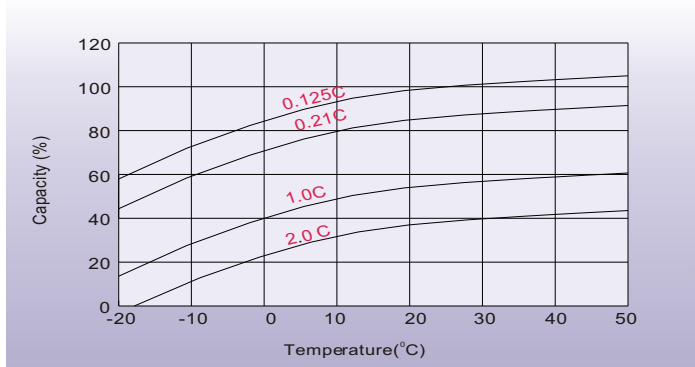
Discharge Characteristics



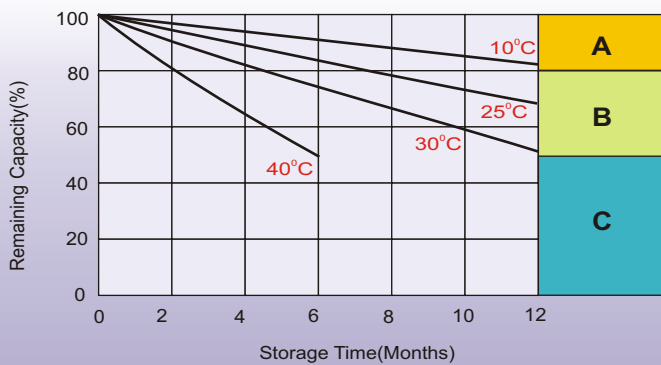
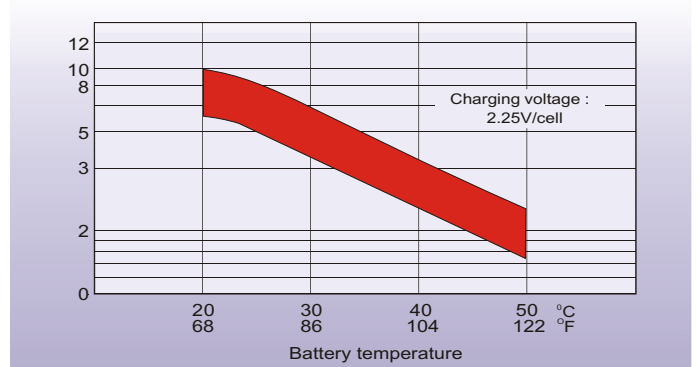
Float Charging Characteristics



Temperature Effects in Relation to Battery Capacity



Effect of Temperature on Long Term Float Life



Self Discharge Characteristics

- A** No supplementary charge required
(Carry out supplementary charge before use if 100% capacity is required.)
- B** Supplementary charge required before use. Optional charging way as below:
 1. Charged for above 3 days at limited current 0.25CA and constant voltage 2.25V/cell.
 2. Charged for above 20 hours at limited current 0.25CA and constant voltage 2.45V/cell.
 3. Charged for 8-10 hours at limited current 0.05CA.
- C** Supplementary charge may often fail to recover the capacity.
The battery should never be left standing till this is reached.



intercel

Waarderveldweg 3 2031 BK Haarlem The Netherlands

MORE THAN BATTERIES Tel +31 23 5149900 Fax +31 23 5322583 Email: sales@intercel.nl