

Specification

Nominal Voltage	2V	
Nominal Capacity(8HR)	400.0AH	
Dimension	Length	210±2mm (8.27 inches)
	Width	175±2mm (6.89 inches)
	Container Height	330±2mm (12.99 inches)
	Total Height (with Terminal)	350±2mm (13.78 inches)
Approx Weight	Approx 26.2 kg (57.8lbs)	
Terminal	T11	
Container Material	ABS	
Rated Capacity	417.0 AH/41.7A	(10hr, 1.80V/cell, 25°C/77°F)
	400.0 AH/50.0A	(8hr, 1.75V/cell, 25°C/77°F)
	356.5 AH/71.3A	(5hr, 1.75V/cell, 25°C/77°F)
	312.6 AH/104.2A	(3hr, 1.75V/cell, 25°C/77°F)
	256.2 AH/250.0A	(1hr, 1.60V/cell, 25°C/77°F)
Max. Discharge Current	3200A (5s)	
Internal Resistance	Approx 0.7mΩ	
Operating Temp. Range	Discharge	-15~50°C (5~122°F)
	Charge	0~40°C (32~104°F)
	Storage	-15~40°C (5~104°F)
Nominal Operating Temp. Range	25±3°C (77±5°F)	
Cycle Use	Initial Charging Current less than 120.0A. Voltage 2.4V~2.5V at 25°C(77°F)Temp. Coefficient -5mV/°C	
	Standby Use No limit on Initial Charging Current Voltage 2.25V~2.3V at 25°C(77°F)Temp. Coefficient -3mV/°C	
Capacity affected by Temperature	40°C (104°F)	103%
	25°C (77°F)	100%
	0°C (32°F)	86%
Self Discharge	Leoch LPX series batteries may be stored for up to 6 months at 25°C(77°F) and then a freshening charge is required. For higher temperatures the time interval will be shorter.	



Applications

- ◆ UPS (High rate)
- ◆ High power backup supply
- ◆ Emergency power supply
- ◆ Starting system
- ◆ Power tools
- ◆ Emergency lighting
- ◆ Electric starting



Constant Current Discharge (Amperes) at 25 °C (77°F)

F.V/Time	5min	10min	15min	20min	30min	45min	1h	2h	3h	4h	5h	6h	8h	10h	20h
1.85V/cell	486.0	428.3	376.5	333.3	278.5	226.3	184.6	123.8	94.6	76.3	65.2	57.5	46.7	39.5	20.9
1.80V/cell	591.7	501.3	429.0	373.5	306.0	243.3	196.7	130.2	102.5	79.0	67.9	59.8	48.8	41.7	21.7
1.75V/cell	691.5	574.4	485.4	414.0	332.9	263.3	211.7	138.1	104.2	83.3	71.3	62.7	50.0	42.2	21.9
1.70V/cell	791.5	649.4	536.5	455.2	361.7	281.3	224.2	145.8	108.8	86.7	74.2	65.0	51.7	43.2	22.5
1.65V/cell	849.6	694.2	570.8	481.3	379.0	292.5	232.9	150.6	112.3	89.4	76.3	66.0	52.7	43.9	22.8
1.60V/cell	\	786.0	641.7	536.5	414.6	316.3	250.0	158.1	116.9	93.1	79.8	69.0	54.6	45.3	23.6

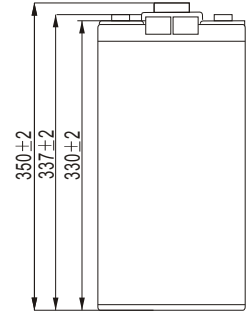
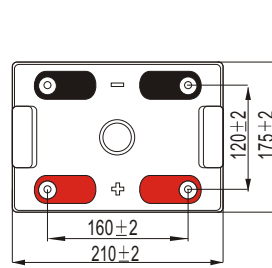
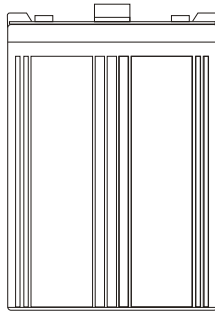
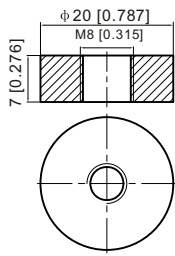
Constant Power Discharge (Watts) at 25 °C (77°F)

F.V/Time	5min	10min	15min	20min	30min	45min	1h	2h	3h	4h	5h	6h	8h	10h	20h
1.85V/cell	893.8	795.4	706.3	631.7	533.8	437.1	358.1	241.5	185.4	149.8	128.5	113.5	92.5	78.6	41.8
1.80V/cell	1076.3	920.0	794.2	697.5	577.5	466.5	379.4	252.5	199.8	154.2	133.1	117.7	96.5	82.6	43.2
1.75V/cell	1231.3	1037.5	887.5	765.6	622.9	500.2	406.5	266.9	202.1	162.1	139.2	123.1	98.8	83.8	43.6
1.70V/cell	1370.2	1146.3	967.3	835.6	673.1	532.3	428.8	281.0	210.6	168.5	144.6	127.3	101.9	85.6	44.7
1.65V/cell	1450.2	1214.4	1021.3	876.7	699.6	548.3	442.5	288.8	216.5	172.9	148.1	129.2	103.5	86.9	45.3
1.60V/cell	\	1344.2	1129.2	966.9	760.0	590.0	472.5	301.7	224.6	179.6	154.6	134.4	107.1	89.6	46.5

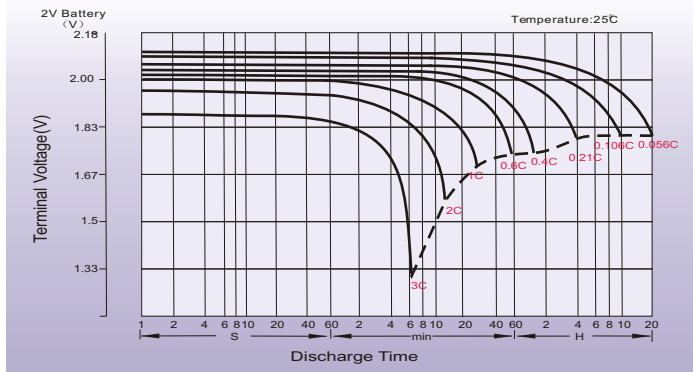
Dimensions

T11 Terminal

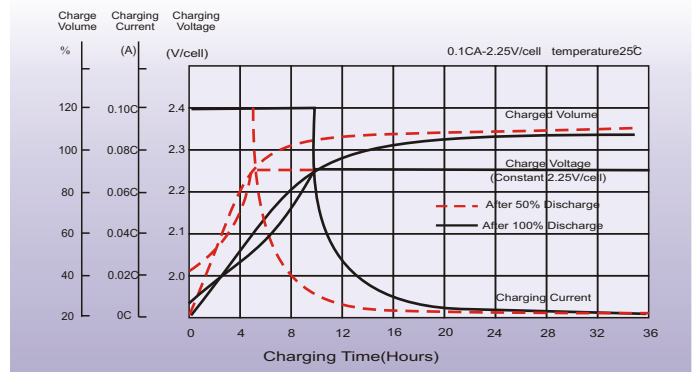
Unit: mm [inches]



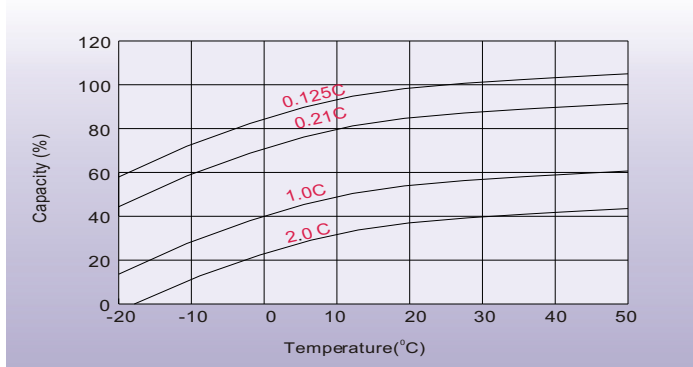
Discharge Characteristics



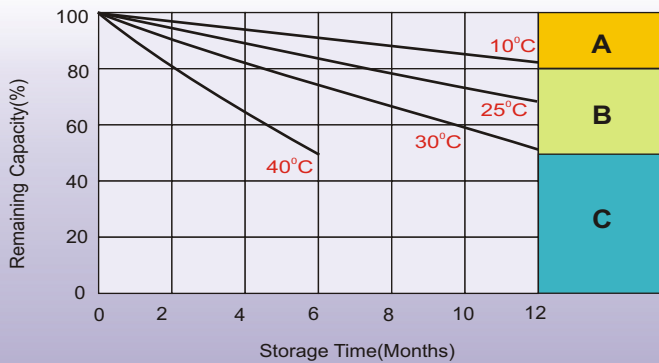
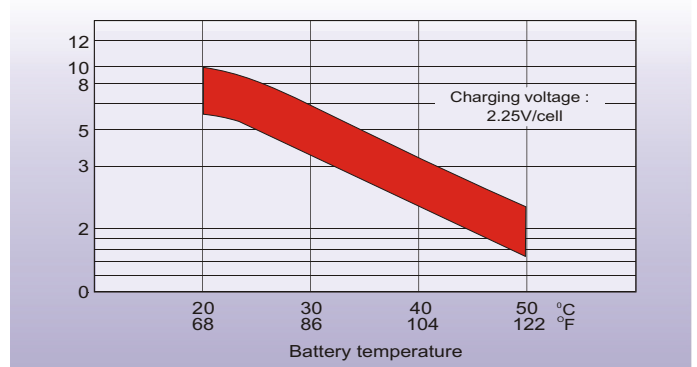
Float Charging Characteristics



Temperature Effects in Relation to Battery Capacity



Effect of Temperature on Long Term Float Life



Self Discharge Characteristics

- A** No supplementary charge required
(Carry out supplementary charge before use if 100% capacity is required.)
- B** Supplementary charge required before use. Optional charging way as below:
 1. Charged for above 3 days at limited current 0.25CA and constant voltage 2.25V/cell.
 2. Charged for above 20 hours at limited current 0.25CA and constant voltage 2.45V/cell.
 3. Charged for 8-10 hours at limited current 0.05CA.
- C** Supplementary charge may often fail to recover the capacity.
The battery should never be left standing till this is reached.



intercel

Waarderveldweg 3 2031 BK Haarlem The Netherlands

MORE THAN BATTERIES Tel +31 23 5149900 Fax +31 23 5322583 Email: sales@intercel.nl