

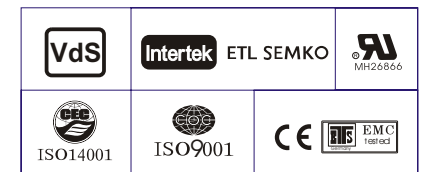
Specification

Nominal Voltage	2V	
Nominal Capacity(8HR)	300.0AH	
Dimension	Length	170±2mm (6.69 inches)
	Width	150±2mm (5.91 inches)
	Container Height	328±2mm (12.91 inches)
	Total Height (with Terminal)	350±2mm (13.78 inches)
	Approx Weight	Approx 18.5 kg (40.8lbs)
Terminal	T11	
Container Material	ABS	
Rated Capacity	312.0 AH/31.2A	(10hr, 1.80V/cell, 25°C/77°F)
	300.0 AH/37.5A	(8hr, 1.75V/cell, 25°C/77°F)
	267.0 AH/53.4A	(5hr, 1.75V/cell, 25°C/77°F)
	234.3 AH/78.1A	(3hr, 1.75V/cell, 25°C/77°F)
	187.5 AH/187.5A	(1hr, 1.60V/cell, 25°C/77°F)
Max. Discharge Current	2400A (5s)	
Internal Resistance	Approx 0.9mΩ	
Operating Temp. Range	Discharge	-15~50°C (5~122°F)
	Charge	0~40°C (32~104°F)
	Storage	-15~40°C (5~104°F)
Nominal Operating Temp. Range	25±3°C (77±5°F)	
Cycle Use	Initial Charging Current less than 90.0A. Voltage	
	2.4V~2.5V at 25°C(77°F)Temp. Coefficient -5mV/°C	
Standby Use	No limit on Initial Charging Current Voltage	
	2.25V~2.3V at 25°C(77°F)Temp. Coefficient -3mV/°C	
Capacity affected by Temperature	40°C (104°F)	103%
	25°C (77°F)	100%
	0°C (32°F)	86%
Self Discharge	Leoch LPX series batteries may be stored for up to 6 months at 25°C(77°F) and then a freshening charge is required. For higher temperatures the time interval will be shorter.	



Applications

- ◆ UPS (High rate)
- ◆ High power backup supply
- ◆ Emergency power supply
- ◆ Starting system
- ◆ Power tools
- ◆ Emergency lighting
- ◆ Electric starting



Constant Current Discharge (Amperes) at 25 °C (77°F)

F.V/Time	5min	10min	15min	20min	30min	45min	1h	2h	3h	4h	5h	6h	8h	10h	20h
1.85V/cell	364.5	321.3	282.3	250.0	208.9	169.7	138.4	92.8	70.9	57.2	48.9	43.1	35.0	29.6	15.6
1.80V/cell	443.8	375.9	321.7	280.2	229.5	182.5	147.5	97.7	76.9	59.2	50.9	44.8	36.6	31.2	16.3
1.75V/cell	\	430.8	364.1	310.5	249.7	197.5	158.8	103.6	78.1	62.5	53.4	47.0	37.5	31.6	16.4
1.70V/cell	\	\	402.3	341.4	271.3	210.9	168.1	109.4	81.6	65.0	55.6	48.8	38.8	32.3	16.9
1.65V/cell	\	\	428.1	360.9	284.2	219.4	174.7	113.0	84.2	67.0	57.2	49.5	39.5	32.8	17.0
1.60V/cell	\	\	\	402.3	310.9	237.2	187.5	118.6	87.7	69.8	59.8	51.7	40.9	33.9	17.6

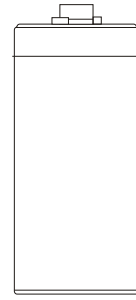
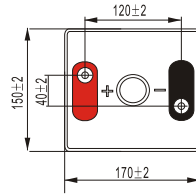
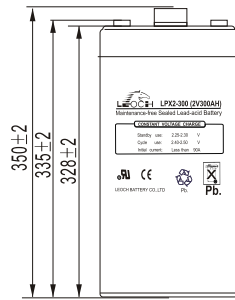
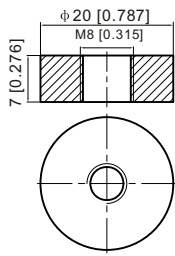
Constant Power Discharge (Watts) at 25 °C (77°F)

F.V/Time	5min	10min	15min	20min	30min	45min	1h	2h	3h	4h	5h	6h	8h	10h	20h
1.85V/cell	670.3	596.6	529.7	473.8	400.3	327.8	268.6	181.1	139.1	112.3	96.4	85.2	69.4	58.8	31.3
1.80V/cell	807.2	690.0	595.6	523.1	433.1	349.8	284.5	189.4	149.8	115.6	99.8	88.3	72.3	61.8	32.3
1.75V/cell	\	778.1	665.6	574.2	467.2	375.2	304.8	200.2	151.6	121.6	104.4	92.3	74.1	62.7	32.7
1.70V/cell	\	\	725.5	626.7	504.8	399.2	321.6	210.8	158.0	126.4	108.4	95.5	76.4	64.1	33.4
1.65V/cell	\	\	765.9	657.5	524.7	411.3	331.9	216.6	162.3	129.7	111.1	96.9	77.7	65.0	33.9
1.60V/cell	\	\	\	725.2	570.0	442.5	354.4	226.3	168.4	134.7	115.9	100.8	80.3	67.0	34.8

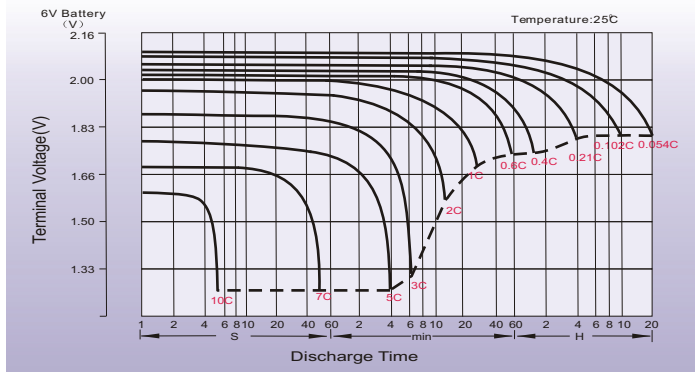
Dimensions

T11 Terminal

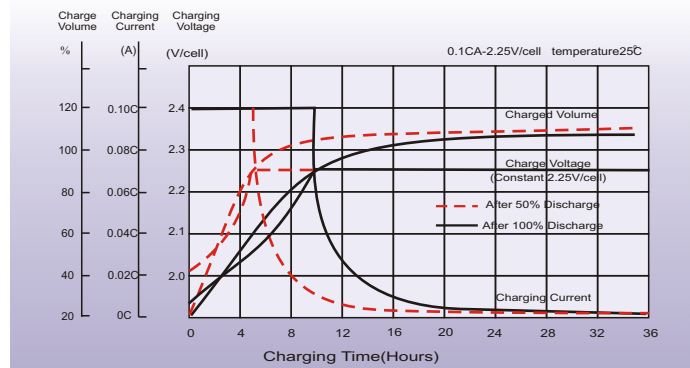
Unit: mm [inches]



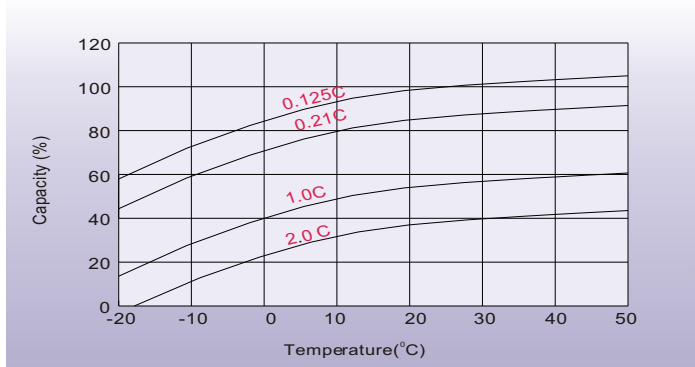
Discharge Characteristics



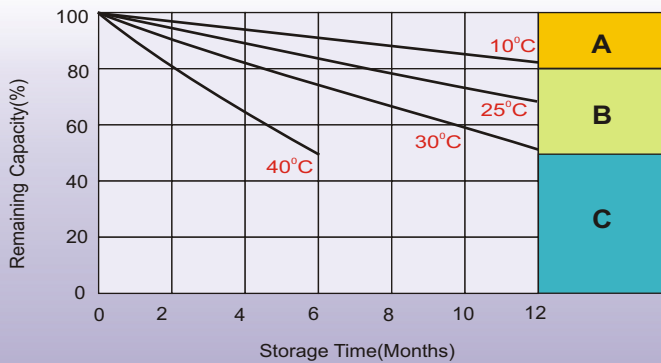
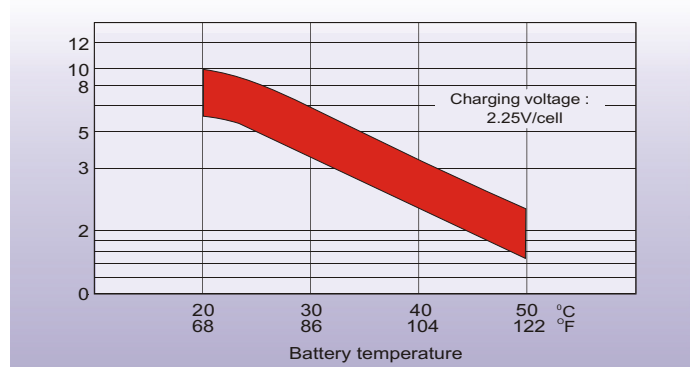
Float Charging Characteristics



Temperature Effects in Relation to Battery Capacity



Effect of Temperature on Long Term Float Life



Self Discharge Characteristics

- A** No supplementary charge required
(Carry out supplementary charge before use if 100% capacity is required.)
- B** Supplementary charge required before use. Optional charging way as below:
 1. Charged for above 3 days at limited current 0.25CA and constant voltage 2.25V/cell.
 2. Charged for above 20 hours at limited current 0.25CA and constant voltage 2.45V/cell.
 3. Charged for 8-10 hours at limited current 0.05CA.
- C** Supplementary charge may often fail to recover the capacity.
The battery should never be left standing till this is reached.



intercel

Waarderveldweg 3 2031 BK Haarlem The Netherlands

MORE THAN BATTERIES Tel +31 23 5149900 Fax +31 23 5322583 Email: sales@intercel.nl