

Specification

Nominal Voltage	2V	
Nominal Capacity(8HR)	200.0AH	
Dimension	Length	170±2mm (6.69 inches)
	Width	110±2mm (4.33 inches)
	Container Height	328±2mm (12.91 inches)
	Total Height (with Terminal)	350±2mm (13.78 inches)
Approx Weight	Approx 13.3 kg (29.3lbs)	
Terminal	T11	
Container Material	ABS	
Rated Capacity	210.0 AH/21.0A	(10hr, 1.80V/cell, 25°C/77°F)
	200.0 AH/25.0A	(8hr, 1.75V/cell, 25°C/77°F)
	178.0 AH/35.6A	(5hr, 1.75V/cell, 25°C/77°F)
	156.3 AH/52.1A	(3hr, 1.75V/cell, 25°C/77°F)
	125.0 AH/125.0A	(1hr, 1.60V/cell, 25°C/77°F)
Max. Discharge Current	1600A (5s)	
Internal Resistance	Approx 1.0mΩ	
Operating Temp. Range	Discharge	-15~50°C (5~122°F)
	Charge	0~40°C (32~104°F)
	Storage	-15~40°C (5~104°F)
Nominal Operating Temp. Range	25±3°C (77±5°F)	
Cycle Use	Initial Charging Current less than 60.0A. Voltage	
	2.4V~2.5V at 25°C(77°F)Temp. Coefficient -5mV/°C	
Standby Use	No limit on Initial Charging Current Voltage	
	2.25V~2.3V at 25°C(77°F)Temp. Coefficient -3mV/°C	
Capacity affected by Temperature	40°C (104°F)	103%
	25°C (77°F)	100%
	0°C (32°F)	86%
Self Discharge	Leoch LP series batteries may be stored for up to 6 months at 25°C(77°F) and then a freshening charge is required. For higher temperatures the time interval will be shorter.	



Applications

- ◆ UPS (High rate)
- ◆ High power backup supply
- ◆ Emergency power supply
- ◆ Starting system
- ◆ Power tools
- ◆ Emergency lighting
- ◆ Electric starting



Constant Current Discharge (Amperes) at 25 °C (77°F)

F.V/Time	5min	10min	15min	20min	30min	45min	1h	2h	3h	4h	5h	6h	8h	10h	20h
1.85V/cell	243.0	214.2	188.2	166.7	139.3	113.1	92.3	61.9	47.3	38.1	32.6	28.8	23.3	19.9	10.5
1.80V/cell	295.8	250.6	214.5	186.8	153.0	121.7	98.3	65.1	51.3	39.5	34.0	29.9	24.4	21.0	10.9
1.75V/cell	345.7	287.2	242.7	207.0	166.5	131.7	105.8	69.1	52.1	41.7	35.6	31.4	25.0	21.3	11.0
1.70V/cell	395.7	324.7	268.2	227.6	180.8	140.6	112.1	72.9	54.4	43.3	37.1	32.5	25.8	21.8	11.4
1.65V/cell	424.8	347.1	285.4	240.6	189.5	146.3	116.5	75.3	56.1	44.7	38.1	33.0	26.4	22.1	11.5
1.60V/cell	\	393.0	320.8	268.2	207.3	158.1	125.0	79.1	58.4	46.6	39.9	34.5	27.3	22.8	11.9

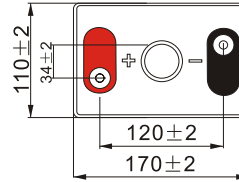
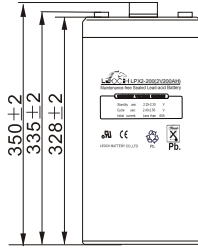
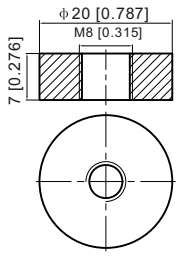
Constant Power Discharge (Watts) at 25 °C (77°F)

F.V/Time	5min	10min	15min	20min	30min	45min	1h	2h	3h	4h	5h	6h	8h	10h	20h
1.85V/cell	446.9	397.7	353.1	315.8	266.9	218.5	179.1	120.7	92.7	74.9	64.3	56.8	46.3	39.6	21.0
1.80V/cell	538.1	460.0	397.1	348.8	288.8	233.2	189.7	126.3	99.9	77.1	66.6	58.9	48.2	41.6	21.8
1.75V/cell	615.6	518.8	443.8	382.8	311.5	250.1	203.2	133.4	101.0	81.0	69.6	61.6	49.4	42.2	22.0
1.70V/cell	685.1	573.1	483.6	417.8	336.6	266.1	214.4	140.5	105.3	84.3	72.3	63.6	50.9	43.1	22.5
1.65V/cell	725.1	607.2	510.6	438.3	349.8	274.2	221.3	144.4	108.2	86.5	74.1	64.6	51.8	43.8	22.8
1.60V/cell	\	672.1	564.6	483.4	380.0	295.0	236.3	150.8	112.3	89.8	77.3	67.2	53.5	45.1	23.4

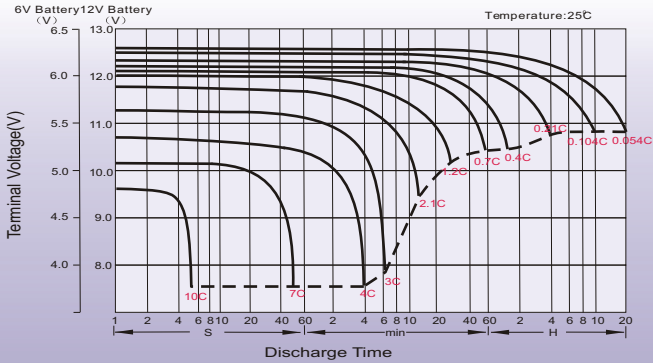
Dimensions

T11 Terminal

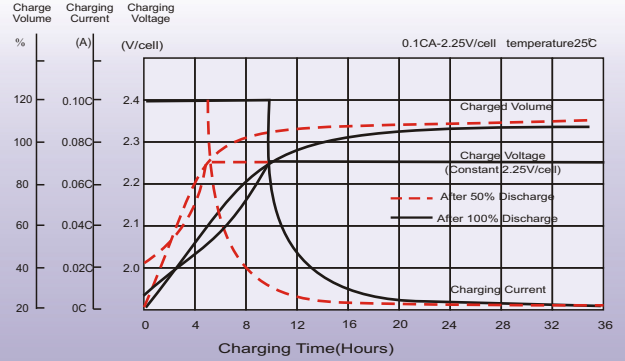
Unit: mm [inches]



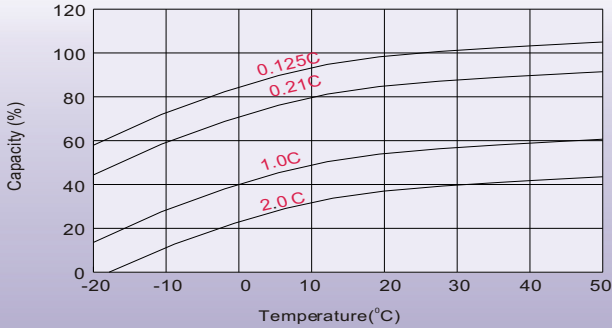
Discharge Characteristics



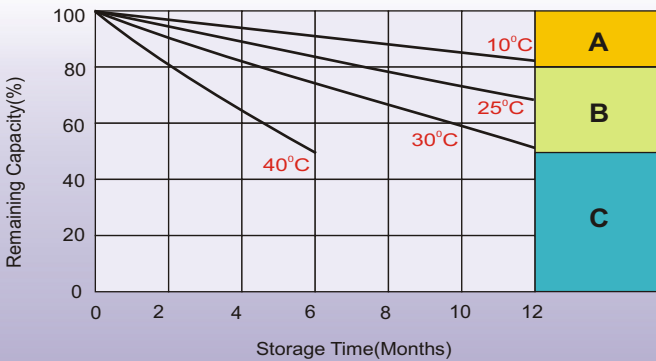
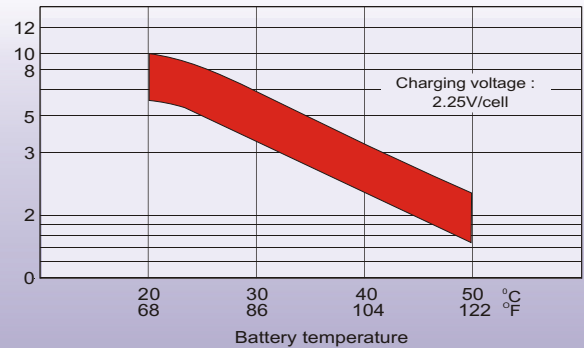
Float Charging Characteristics



Temperature Effects in Relation to Battery Capacity



Effect of Temperature on Long Term Float Life



Self Discharge Characteristics

- A** No supplementary charge required
(Carry out supplementary charge before use if 100% capacity is required.)
- B** Supplementary charge required before use. Optional charging way as below:
 1. Charged for above 3 days at limited current 0.25CA and constant volatge 2.25V/cell.
 2. Charged for above 20hours at limited current 0.25CA and constant volatge 2.45V/cell.
 3. Charged for 8-10hours at limited current 0.05CA .
- C** Supplementary charge may often fail to recover the capacity.
The battery should never be left standing till this is reached.



intercel

Waarderveldweg 3 2031 BK Haarlem The Netherlands

MORE THAN BATTERIES Tel +31 23 5149900 Fax +31 23 5322583 Email: sales@intercel.nl