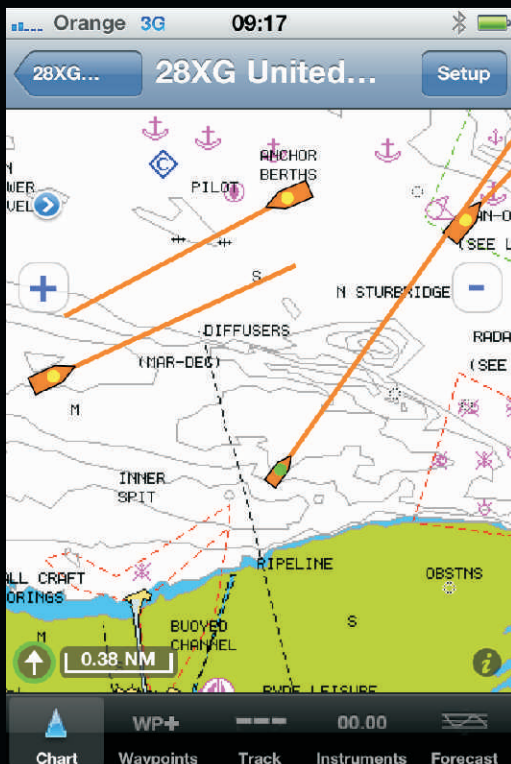


DIGITAL[®] YACHT

The NEW Wireless iAIS designed for mobile devices

- ▶ The world's first wireless navigation data server – and with high performance, dual channel integrated AIS receiver
- ▶ Provides Wireless TCP/IP, NMEA 0183 (38400 baud) and USB outputs (available for use simultaneously)
- ▶ NMEA input and multiplex function – allows boat instrument and GPS data to be connected to iPad/Phone/Touch products as well as AIS data
- ▶ WiFi range dependent upon local conditions but generally suitable for installation on boats up to 30m without the need for specialist antennas
- ▶ Fully compatible with popular Apple Apps such as iNAVx (see pic below) - turns your iPhone into a complete navigation solution.



iAIS

High Performance
Dual Channel AIS Receiver
With Wireless Interface and
NMEA/USB I/O Capability

AIS/NMEA Wireless
link compatible with:
iPhone 3/3GS/4
iPad

iTouch
and PC software which
supports a TCP/IP link

Note: iPad not included



**NMEA
and USB**

Interfaces Too Turn your iPhone into a full function marine navigator with AIS

Digital Yacht have developed a new, low cost navigation device for use with Apple's popular range of mobile products. Called iAIS, it wirelessly links a boat's navigation data to the Apple iPhone, iPad or iTouch. It also incorporates a highly sophisticated, dual channel Automatic Identification System (AIS) receiver allowing compatible "apps" access to NMEA instrument, GPS and AIS data. The use of a dual channel AIS receiver design greatly improves target acquisition capability and helps prevent drop out.

iAIS can multiplex NMEA data that is available on board the boat - for instance GPS, depth, speed, wind etc. All of this information is combined with the AIS data into the wireless feed and dedicated NMEA/USB outputs. Some users have complained that the GPS devices incorporated into the iPhone and iPad suffer from jitter or poor lock-on, but by using your onboard GPS or even hand held marine GPS you will get substantially improved GPS readings on any compatible

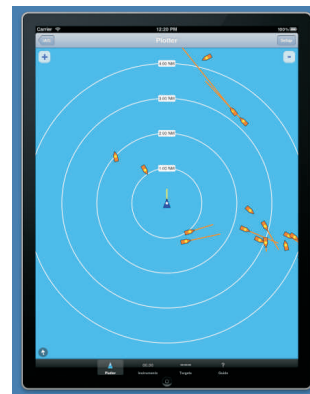
application. iAIS just requires a connection to a standard VHF antenna or suitable VHF/AIS antenna splitter.

Digital Yacht offer a free app, available for download through the Apple store. The iAIS app shows a radar style display of AIS targets together with a target list. Click on a target for detailed information such as identity, course and speed.

There are also some great low cost apps that incorporate AIS, charting and navigation functions. Currently, the most popular application for the iPhone and iPad, which can support a real time GPS overlay and AIS, is iNavX (www.inavx.com). Compatible with Navionics charts (worldwide) and NOAA charts in the US, iNavX provides a complete set of navigation functions that turns your portable Apple device into a fully functional electronic chart plotter. It supports waypoints, routes and tidal data and is beautifully simple to use. It can even overlay GRIB weather data. iNAVx sell and support this app directly.

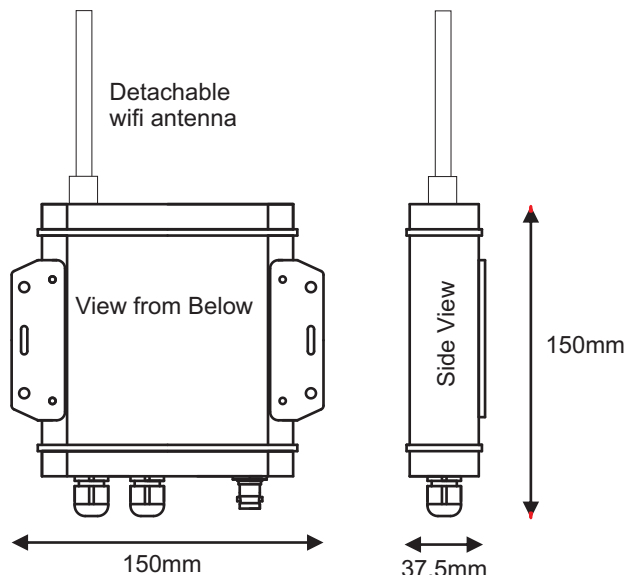
iAIS Specifications

iPhone, iPad and iTouch users can download a free app (iAIS) through the Apple store for use with the iAIS device. It displays AIS targets on a radar like display with range rings and choice of north up or course up projections. There is also a target list and target "drill down" functionality allowing the target's details to be displayed.



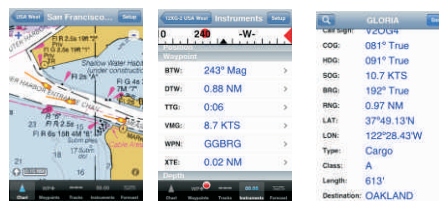
For even more functionality, we recommend iNAVx as a low cost charting, instrument and AIS application. It utilises Navionics' charts (also available to download) to turn your iPad into a full function chart plotter with high resolution marine charting, real time GPS positioning and an AIS overlay - thanks to iAIS.

- AIS Receiver:** Dual channel digital high sensitivity design
161.975MHz and 162.025 MHz, 25 KHz channel bandwidth
RX Sensitivity <107dBm at 20% packet error rate
- Voltage Requirement:** 12/24V DC
- Power:** Typically 2-4W
- NMEA Input:** Multiplexes NMEA data at 4800 baud (must have check sum) with internal AIS data
- NMEA Output:** NMEA0183 38400 baud
- PC Connection:** USB (Driver supplied). Compatible with Windows, Linux and MAC
- WiFi Link:** 802.11b/g
- Max WiFi Range:** Typical 30m
Maximum 100m in free air
- Max number of wifi users:** 1
- Protection:** IPX5
- Status Indicators:** Power, NMEA data & wifi link
- Antennas:** Requires connection to VHF antenna or suitable VHF/AIS antenna splitter
Supplied with wifi antenna



AIS & NMEA data made available on wifi, NMEA and USB

Wireless Data Link
iAIS incorporates a wireless data server. Simply point the iPhone/iPad/Touch to the built in wireless access point on iAIS and you can connect and receive AIS and NMEA data in any compatible app



iPhone/iPad/Touch



VHF Antenna Connection

Power (12/24v) and NMEA 0183 Data In
(Single port - iAIS will multiplex any valid NMEA sentence with check sum)

NMEA 0183 Data Out
(AIS and multiplexed data at 38400 baud - for use with traditional chart plotter)

USB PC Data Out
(AIS and multiplexed data at 38400 baud - ideal for use with PC navigation programs)

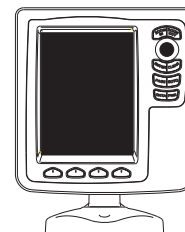


Chart Plotter



PC USB

iAIS System Concept

