



2 0 1 0



The Binocular-Specialists!

STEINER 
G E R M A N Y

Welcome to Steiner



Still at its birthplace in Bayreuth, Germany; Steiner-Optik is Europe's largest producer of binoculars. Steiner is known for cutting edge design, rhino-tough durability and unparalleled optical performance. Our reputation speaks for itself and we specialize only in binoculars. It is our pride and pleasure to offer the world's best binocular to you.



The Binocular-Specialists!



Our Mission

People who use binoculars usually have one thing in common: They are happiest outdoors. They are close with nature and their binoculars are an important part of this relationship. We believe that we can support your endeavors with the best binoculars for your application. With over 40 models, and 60 years experience in producing binoculars, we will bring you closer with the outdoor world.

Carl Steiner

A lifetime of precision

7 x 50 Military R

Perfectly aligned and retained lens system eliminates eye strain and maximizes light transmission output.

Individual Sports Auto-Focus adjustment improves waterproof seal and durability.

Double, grease-packed O-rings are waterproof to 15 feet.

BAK 4 prism is brightest and best available.

Independent prism carriage absorbs shocks.

Threaded retaining rings keep each lens securely aligned.

Fully multi-coated optics on all air-to-glass surfaces provide highest possible light transmission.

Fiber-reinforced polycarbonate housing is lightweight and super tough.

Easy-grip rubber armor protects against temperature extremes.



Built Tough for A Lifetime of Precision.

Comfort in Design

The distinctive Steiner shape is ergonomically designed to fit your grip easily, providing maximum comfort even when using the binoculars for extended periods of time. This is the same body design used on the binoculars we make for the U.S. Army, U.S. Navy SEALs, and other military and law enforcement agencies.

Optics that Intensify Performance

Need to punch through darkness or haze to get a better view? Make wildlife pop out of foliage? Cut glare in bright sunlight? Steiner lenses are coated to maximize performance for specific uses like these. High contrast, "game-sensing" coatings on our Predator series are designed for optimum wildlife discovery; our exclusive HD (High Definition) optics allow unparalleled transmission of visible light for enhanced low-light performance in the Nighthunter XP, Commander XP, and Peregrine XP. The optics on other binoculars, such as the Safari series, are designed to block UV light while providing comfortable, bright, clear-viewing pleasure.

Lightweight and Rugged

You may not see "rugged" and "lightweight" used together too often, but that's exactly how to describe Steiner binoculars. The fiber reinforced polycarbonate material we use to build our binoculars is very light in weight, an especially important feature during extended periods of use and long treks where ounces really count. But these binoculars are tough, too. The polycarbonate is actually more impervious to temperature and atmospheric extremes than most metals, not to mention its shockproofing value.



Predator Pro – Game-finding CAT contrast.

Makes animals "pop" out of heavy foliage by increasing light transmission of brown and red colors.

Merlin – Premium optics, rugged and comfortable feel at an exceptional value. Designed for natural color performance for birding and viewing wildlife.

Military/Marine – Original all around "Tough as Nails" performance. Natural color reproduction with legendary durability. For all outdoor applications.

Nighthunter XP – The brightest optics available for the darkest conditions. Features high resolution "HD" optics for the brightest and sharpest images for hunting, military or professional use.

Predator C5 – Developed as a special tool for hunters and nature observers to more easily spot wildlife in a woodland setting.

Peregrine XP – The result of over six years development is a binocular so good, that we describe it with just one word: Perfect.

Safari Pro – Unique UV-A and UV-B blocking optics offer comfortable, crisp images in the mountains, sand and sea.

Wildlife Pro – Peak performance compacts designed for travel and mobility. Precision alloy construction with long eye relief rivals many full sized binoculars.

Marine – Featuring the new Commander XP. Brilliance, design, and the toughest construction have made Steiner the world leader in marine optics.

Police & Military – From the popular duty-grade Police Series to the Mil.spec Military R, professionals rely on these binoculars for clear details in critical situations and in all conditions.



PREDATOR® PRO

Nothing escapes these eyes. Game enhancing, high contrast Predator Pro optics give wildlife no place to hide.



8 x 30 PREDATOR PRO

The versatile Predator Pro 8 x 30 is small enough to carry easily and fit into a coat pocket, while offering both power and brightness. It's the choice for those who need the Predator's defoliating edge in the widest variety of outdoor environments, from woodlands to open fields. Set the Sports Auto-Focus for yourself and everything will appear clearly, a tremendous advantage in heavy cover. 10-year limited warranty.

8 x 30 – Item no. 288
Weight: 18 oz
Field of view: 360 feet @ 1000 yards
Eye relief: 20 mm

12 x 40 PREDATOR PRO

The 12 x 40 Predator Pro features Steiner's new PC5 Color Adjusted Transmission (CAT) lens coating that enhances brown and red colors against foliated backgrounds, making game subjects "pop" from their woodland environs. The 12 x 40 Predator Pro offers markedly brighter and crisper images, enhancing the binocular's effectiveness at dusk and dawn, or in poor weather or low light conditions. 10-year limited warranty.

12 x 40 – Item no. 242
Weight: 24.5 oz
Field of view: 264 feet @ 1000 yards
Eye relief: 18.5 mm

Give yourself the advantage with binoculars designed to actually help you find game, not just see it.



8 x 22 PREDATOR PRO

Small in size, light in weight, with the ability to spot game in all terrain make these the ideal choice for treks in the forest and heavily foliated brush. We developed the body design with dedicated hunters in mind. It substantially increases handling comfort in all weather conditions, especially wet conditions or when wearing gloves. The 8 x 22 Predator Pro weighs only a few ounces and folds easily into a pocket or its own small case. The new PC5 coating delivers the clarity and brightness you'd expect from larger binoculars. Includes deluxe case and strap. 10-year limited warranty

8 x 22 - Item no. 234
Weight: 10 oz
Field of view: 369 feet @ 1000 yards
Eye relief: 10 mm

10 x 26 PREDATOR PRO

With higher magnification and a larger objective lens, the 10 x 26 Predator Pro provides high power and excellent light transmission with the new PC5 game-sensing lenses. All this performance in a package that fits into a shirt pocket. The perfect choice for bowhunters or hunters on the move the 10 x 26 is a binocular that delivers all day, but won't get in the way. The new body design with its enlarged center focus improves handling, especially in wet conditions. It features wrap-around eye cups, is water resistant and fogproof. Includes deluxe case and strap. 10-year limited warranty.

10 x 26 - Item no. 236
Weight: 12.3 oz
Field of view: 289 feet @ 1000 yards
Eye relief: 11 mm

MERLIN®

Steiner's Merlin offers superb ease of use, superb brightness and knife-sharp resolution. Very fast, yet smooth and precise center-focusing with down to 6.9' close focus. Fully multi-coated optics assure optimal brightness in low light situations.

Steiner's roof-prism Merlin brings true colors with exceptional brightness and resolution. Phase corrected, fully multi-coated optics assure optimal brightness in low light situations and offer remarkable color fidelity.

This unique earth-tone dark brown color exterior was especially formulated to not reflect light but rather absorb it and make the binoculars almost transparent to wildlife.

The Merlins are waterproof and include a 10-year limited warranty. They come with a deluxe thermo-molded case, rain-guard, attached lens caps and neoprene neck strap.



10 x 50 MERLIN

Perfect balance and comfort with exceptional brightness. The Merlin 10 x 50's feature phase corrected roof prisms and fully multi-coated optics for clarity and highest resolution. The image brightness due to the large 50 mm lenses is perfect for deeper, older growth forests and for viewing during early morning and evening hours. The larger lenses do not sacrifice compactness and the sleek, compact design is easy and comfortable to view and handle.

10 x 50 - Item no. 430
Weight: 28 oz
Field of view: 264 feet @ 1000 yards
Eye relief: 18 mm
Close focus: 8.0 feet

10 x 42 MERLIN

Power, with exceptional brightness. Smooth, precise center focusing offers fast details at varying distances. Recommended mostly for distance glassing such as shorebirds, hawks, falcons and eagles. Also good for getting extraordinary close-up views at feeders and nesting, while maintaining good distance so not to spook wildlife. For the hunter, the 10 x 42 Merlin is ideally suited for most North American big game.

10 x 42 - Item no. 458
Weight: 27 oz
Field of view: 274 feet @ 1000 yards
Eye relief: 18 mm
Close focus: 7.9 feet



MERLIN®

If you need high performance for faster discovery, especially of birds on the move, take a close look at the new lightweight Steiner Merlin. They are precise, yet amazingly rugged and also resistant to leakage for even the rainiest days.



8 x 3 2 M E R L I N

Very fast, yet smooth and precise center focusing with 8.9' close focus. Steiner's 8 x 32 fully multi-coated optics assure optimal brightness in low light situations. Rubber armored exterior makes the Merlins very durable and provides good grip. The rugged armoring also makes them silent for up-close glassing or stalking.

8 x 32 - Item no. 438
Weight: 22 oz
Field of view: 336 feet @ 1000 yards
Eye relief: 15 mm
Close focus: 8.9 feet

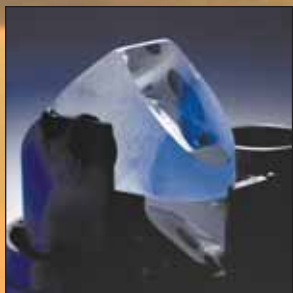
8 x 4 2 M E R L I N

The best brightness and widest field of view of the Merlin Series. This is the best all around size and model for all birding applications. The brightness and field of view have many benefits, especially in lower light or following birds in flight.

8 x 42 - Item no. 448
Weight: 26 oz
Field of view: 342 feet @ 1000 yards
Eye relief: 19 mm
Close focus: 6.9 feet

MILITARY/MARINE®

Versatile and with astonishing optical performance, they feature the rugged construction and looks just like the binoculars we build for military use.



The Military/Marine's brightness and razor-sharp performance is assured through firmly anchoring the prisms to an independent inner optical carriage which is resistant to shock and impact.



8 x 30 MILITARY/MARINE

A tough, solid compact that offers plenty of magnification, rainproof construction and maximum versatility. Refined design by years of use in a variety of settings, from mountaintops to deep canyons, aboard and ashore. For spotting game or exploring the wonders of nature, Steiner's Sports Auto-focus puts all the action in focus at once. Long eye-relief for eyeglass wearers. 10-year limited warranty.

8 x 30 - Item no. 280
Weight: 18 oz
Field of view: 360 feet @ 1000 yards
Eye relief: 20 mm



10 x 50 MILITARY/MARINE

An excellent choice for those who need extra power and brightness. The large, 50-mm objective lenses gather more light, and present a larger image to the user, yielding a brighter view and greater stability than binoculars with smaller objective lenses. The 10 x 50's power, brightness and great depth-of-field focusing make this an excellent choice for spotting antelope, elk, or caribou. 10-year limited warranty.

10 x 50 - Item no. 210
Weight: 36 oz
Field of view: 300 feet @ 1000 yards
Eye relief: 17 mm

NIGHTHUNTER[®] XP

Dawn. Dusk. In the shadows...or even in nearly total darkness... you'll see what others miss with Steiner Nighthunter XPs – binoculars that deliver unparalleled low-light performance.



Now, there is a choice of eyecups included with the new Nighthunter XP:

A winged, profiled set (to block sidelight); a flat set for users with glasses; and an extended set for users that want the full eye-relief without the side flaps. They interchange in seconds. All three pairs of eyecups are included with the Nighthunter XP.

10 x 50 NIGHTHUNTER XP

The Nighthunter XP 10 x 50 is the ultimate combination of brightness and power, giving you the double-digit power you need in open country, with the low light performance you'd expect from larger, heavier binoculars. The perfect choice for the eastern or western hunter that glasses in more open terrain at medium and long ranges. Great for Deer, Elk or Pronghorn hunting, the 10 x 50 Nighthunter XP has all the power and brightness you need in all conditions. With their ergonomically designed body the Nighthunter XP feels comfortable and stable in your hands for fatigue-free observation. 30-year limited warranty.

10 x 50 – Item no. 510
Weight: 35 oz
Field of view: 315 feet @ 1000 yards
Eye relief: 22 mm

12 x 56 NIGHTHUNTER XP

The 12 x 56 Nighthunter XP are the highest power low-light binoculars available. Perfect for finding big country game under all light conditions or stretching out another half hour of viewing time on the edge of a meadow. Great choice for viewing summer bucks or zeroing in on ground hogs and prairie dogs at long ranges. The 12 x 56 Nighthunter XP is easy to use for long time periods due to its outstanding High definition lenses, ergonomically designed body and Sports Auto-Focus which puts everything in focus from 20 yards to infinity. 30-year limited warranty.

12 x 56 – Item no. 512
Weight: 41 oz
Field of view: 258 feet @ 1000 yards
Eye relief: 22 mm

PREDATOR® C5

The Steiner Predator C5 binocular was developed as a special tool for hunters and nature observers to more easily spot animals in a woodland setting. High contrast C5 optics surrounded by a sturdy shock & waterproof housing.



10 x 42 PREDATOR C5

The 10 x 42 Predator® C5 has new mirror technology that combines silver mirror coatings with selected dielectric coating applications to the C5's roof prism phase-corrected optics. The Predator C5 uses an all-new rigid chassis that is not only durable but also mil.spec waterproof and dry-nitrogen pressurized. You'll appreciate the aggressive styling of the focus wheel making the C5 easy to use and focus with gloves in any weather. The new C5 optics deliver greater light transmission, image contrast and better pinpoint resolution than ever before. 30-year limited warranty.

10 x 42 – Item no. 250
Weight: 26.4 oz
Field of view: 315 feet @ 1000 yards
Eye relief: 17.4 mm

12 x 42 PREDATOR C5

The 12 x 42 Predator® C5 features a unique ergonomically designed housing and a special rubberized armor covering that feels great in the hand and helps protect the binocular from the harshest hunting conditions. For the first time, the Predator gets a twist-up eye cup system while offering an extensive eye relief. Each Predator C5 includes a padded travel case, rain guard for the oculars and attached objective lens caps, along with a contoured neck strap. Each binocular is threaded with a tripod mount for fit to the optional tripod adapter. 30-year limited warranty.

12 x 42 – Item no. 252
Weight: 27.1 oz
Field of view: 276 feet @ 1000 yards
Eye relief: 16.4 mm

PREDATOR® C5

Nothing escapes these eyes – two extremely bright, high-contrast binoculars that let you choose the model that best suits the unique terrain where you'll be hunting or scouting.



8 x 56 PREDATOR C5

If you're hunting or scouting in woods, swamps or terrain broken up by brush or thickets, the premium isn't so much on power as it is on brightness, contrast and the ability to "pop" game out of cover. Predator 8X C5s are more than equal to the task. This versatile 8X binocular is excellent in early morning or around dusk when light is low but wildlife is most likely to be active. Their large, specially coated 56mm objective lenses pull in maximum light and are especially good in the brownish color range where they tend to separate birds and animals from surrounding foliage.

8 x 56 – Item no. 254
Weight: 40.2 oz
Field of view: 400 feet @ 1000 yards
Eye relief: 16 mm

10 x 56 PREDATOR C5

Whether you're glassing Africa's savannas, tracking a buck across the Plains, clambering around barren mountainsides or trekking across the sparse deserts of the Southwest, these Predators have the power to tackle distances and bring your quarry into sharp focus. Steiner's years in the field, and our own brand of precision engineering have created an outstanding 10X binocular. The large 56mm objective lenses and special coatings on both C5s offer the superior brightness and contrast needed to separate birds and game from their surroundings, no matter how well they blend in.

10 x 56 – Item no. 256
Weight: 42.3 oz
Field of view: 358 feet @ 1000 yards
Eye relief: 17 mm

PEREGRINE[®] XP[™]

Engineering and styling requires more than just a newer or better model. It takes years of research, testing and dedication. A binocular so good, that we describe it with just one word: Perfect.



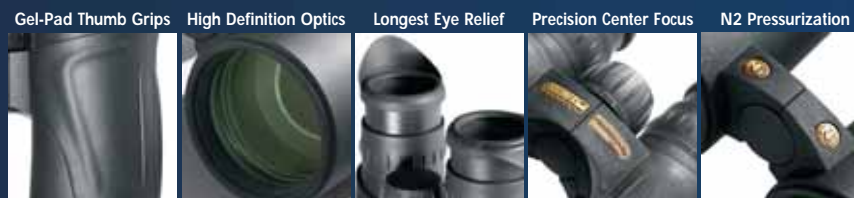
10 x 44 PEREGRINE XP

Higher magnification usually means a narrow field of view. With the 10 x 44 Peregrine, we've managed to keep the viewing field width very high with an angle of 6.25°. The wide field, combined with 10x magnification makes the 10 x 44 XP the ideal binocular for up-close discovery. The 44mm lenses will deliver more light to your eyes than similar sized 10 x 40 or 10 x 42 models. 30-year limited warranty.

10 x 44 - Item no. 814
Weight: 30 oz
Field of view: 328 feet @ 1000 yards
Eye relief: 20 mm
Close focus: 6.5 feet



NANO™ Protection hydrophobic lens.



PEREGRINE[®] XP[™]

From our humble beginnings to Europe's number one binocular maker, the Peregrine XP represents our passion and pride for making the best binoculars in the same factory in Bayreuth, Germany.

XP ENGINEERED SHAPE & STYLE

The XP's smooth rubber armoring and sculpted shape is a pleasure to hold. Under the outer armoring, hides a high-tech, lightweight, high-pressure, magnesium alloy chassis that delivers unrivaled stability.



8 x 44 PEREGRINE XP

The advantage of the 8x Peregrine XP is clear: a wide (7.4°) viewing field offers quick location of birds, wildlife and viewing subjects. The 8x magnification also results in a larger exit pupil which can make the view appear slightly brighter, especially if using the binocular with eyeglasses. The rich colors are complimented by the large, bright 44mm lenses. 30-year limited warranty.

8 x 44 - Item no. 804
Weight: 30 oz
Field of view: 390 feet @ 1000 yards
Eye relief: 20 mm
Close focus: 6.5 feet



SAFARI[®] PRO

The bold new Safari Pro features an edgy, yet very functional exterior design. The eye relief was increased on both compact models to offer enhanced brightness with more viewing comfort.



8 x 22 SAFARI PRO

The Safari Pro 8 x 22 feature a new center-focus wheel making focusing easier, faster and smoother. They fold to fit a pocket or their own small case (included). They feature the brilliance of Steiner optics, but screen UV light and reduce glare. Ideal for hiking, backpacking or other active outdoor sports.

8 x 22 - Item no. 231
Field of view: 369 feet @ 1000 yards

Weight: 8.5 oz
Eye relief: 10 mm

10 x 26 SAFARI PRO

The 10 x 26 Safari Pro feature the same robust, water resistant construction like the 8 x 22. The 10 x 26 adds power and maintains good levels of brightness, while blocking haze and UV light to bring you comfortable and sharp images. Also includes a soft padded case to protect them for travel.

10 x 26 - Item no. 235
Field of view: 291 feet @ 1000 yards

Weight: 9.7 oz
Eye relief: 11 mm



8 x 30 SAFARI PRO

The 8 x 30 Safari Pro is the perfect all purpose outdoor companion, small and light enough to travel easily, yet powerful enough to put you in the middle of the action. It is designed like the versatile Steiner Military/Marine binocular, but with greater glare- and UV- blocking ability, and new profiled wrap-around eye cups to block distracting side light. They feature Steiner's convenient Sports Auto-Focus that, once set for your eyes, gives you a sharp, clear view of everything from 20 yards to infinity without further adjustment.

8 x 30 - Item no. 444
Field of view: 360 feet @ 1000 yards

Weight: 18 oz
Eye relief: 20 mm

WILDLIFE™ PRO

The Wildlife Pro series feature high-definition optics and are wrapped in a smooth, silent and non-reflective earth-tone rubber armoring that makes them almost invisible to game animals and birds.



8.5 x 26 WILDLIFE PRO

Steiner's multi-coated optics will give you excellent color fidelity and brightness that allows for viewing in virtually any light condition. Being water resistant and fogproof they are the perfect companion for your action time outside. Includes deluxe case and comfort neoprene strap. 30-year limited warranty.

8.5 x 26 - Item no. 326
Field of view: 333 feet @ 1000 yards

Weight: 9.7 oz
Eye relief: 13 mm



10.5 x 28 WILDLIFE PRO

Both 8.5 and 10.5 power Wildlife Pro models are phase corrected and provide sharp distortion-free edge to edge performance. Long distances can focus down quickly to less than 9 feet in about two turns of the precision "Fast Close Focus" gearing. Includes deluxe case and comfort neoprene strap. 30-year limited warranty.

10.5 x 28 - Item no. 328
Field of view: 264 feet @ 1000 yards

Weight: 11 oz
Eye relief: 13 mm



8 x 30 WILDLIFE PRO ULTRA SHARP

Like all Wildlife Pro models, this outstanding new 8x30 performs exceptionally well in low light. As in other Steiner models, Steiner's unique auto focusing system lets you adjust each eyepiece for even subtle differences between your eyes. But what makes viewing "Ultra Sharp" is the addition of a new center-focus wheel that lets you fine-tune the image, down to as close as six feet. With just a touch, you can sharpen your senses for quick, critical decisions, even on moving targets that are well camouflaged. And the lighter weight of 21 oz. will be a welcome relief at the end of a long day.

8 x 30 Ultra Sharp - Item no. 338
Field of view: 360 feet @ 1000 yards

Weight: 21 oz
Eye relief: 17 mm

Moving targets have always been a problem for birders and wildlife enthusiasts. Steiner's revolutionary autofocus system simplifies this by eliminating the need to manually refocus from 20 yards to infinity. For added speed and clarity, the new center focus wheel is so precise it gives you a sharper image faster than any other binocular on the market.



COMMANDER XP

Setting the standard worldwide, today Steiner marine binoculars are the number one choice for thousands of marine professionals, blue water sailers, trophy fishermen and elite military units who can't afford compromise.



NANO™ Protection hydrophobic lens.



7 x 50 COMMANDER XP

The most important innovation in the Commander XP are the XP Optics; a new high definition, broad band optical formula that features record setting light transmission for times in the dark and clear, sharp, high contrast and comfortable images in daylight. In addition to the XP Optics, the objective and ocular lenses feature a new high-tech "NANO Protection" optical coating. This new coating repels water and moisture off the lenses leaving them crystal clear for viewing in wet and rainy conditions. 30 year limited warranty



Commander XP reticle

7 x 50 - Item no. 295 (not shown)
Weight: 37 oz
Field of view: 390 feet @ 1000 yards
Eye relief: 22 mm

7 x 50 - Item no. 395 (with compass)
Weight: 39 oz
Field of view: 390 feet @ 1000 yards
Eye relief: 22 mm

MARINE & OBSERVER

Big on performance and life-long durability, Steiner's 7x50 Marine and Observer with Compass models offer full featured performance with exceptional value.

7 x 50 MARINE

The 7 x 50 Marine is equipped with Steiner's Sports Auto-Focus system; everything is in focus from 20 yards to infinity once set for your eyes. Steiner Marine binoculars are guaranteed waterproof and shockproof to stand up to harsh marine use. Includes a web strap, rain and spray guard for the eyepieces and attached objective lens caps. 10-year limited warranty.

7 x 50 - Item no. 575

Weight: 37 oz

Field of view: 354 feet @ 1000 yards

Eye relief: 20 mm

7 x 50 OBSERVER COMPASS

Tough, dependable marine optics with the world's most stable and easiest to read compass system. The compass also includes a range finding reticle for distance determination and electronic compass illumination for bearings in darkness. Equipped with Steiner's Sports Auto-Focus system, everything is in focus from 20 yards to infinity once set for your eyes. The Observers are guaranteed waterproof and shockproof to stand up to harsh marine use. 10-year limited warranty.

7 x 50 - Item no. 685

Weight: 39 oz

Field of view: 368 feet @ 1000 yards

Eye relief: 20 mm



NAVIGATOR®

Coastal cruisers prefer the comfortable and compact Navigator Pro for their lightweight and outstanding haze cutting high contrast optics. Navigator Pro optics cut through UV light and haze for all day glassing comfort.

8 x 30 NAVIGATOR

The compact 8 x 30 Navigator is also the most versatile. Designed like the bigger 7 x 50's, the 8 x 30 Navigator has been adopted for use as a smaller viewing or "back-up" companion. Its compact design and lightweight make it suitable for any use. It fits easily in a coat pocket and features Steiner's Sports Auto-Focus. The 8 x 30 Navigator offers Steiner's brilliant new "anti-haze" optics for day time and low light performance. Even if you prefer larger 7 x 50's, or a binocular with an integral compass, you'll want to consider the new Navigator 8 x 30 as the perfect second binocular.

8 x 30 - Item no. 185

Weight: 18 oz

Field of view: 380 feet @ 1000 yards

Eye relief: 20 mm

7 x 30 NAVIGATOR PRO C

Steiner's 7 x 30 Navigator Pro is the world's smallest and lightest binocular with integrated compass. The compact design makes it suitable for use on any boat. It fits easily in a coat pocket and features Steiner's Sports Auto-Focus for single-handed use. The 7 x 30 Navigator Pro offers our brilliant new "anti-haze" optics for greatest contrast during the day time and low light situations. Water resistant and fogproof. Includes deluxe case and strap.

7 x 30 - Item no. 353

Weight: 20 oz

Field of view: 369 feet @ 1000 yards

Eye relief: 18 mm



TACTICAL

A New 10x50 binocular rangefinder with the military precision needed for situations where you don't get the luxury of a second chance. The 10x42R Tactical will compliment any military rifle scope with its SUMR reticle.



Steiner's Military Rangefinder features military high definition porro-prism binocular lenses. These specially-coated mil.spec lenses gather maximum light and provide HD clarity and brightness with ultimate sharpness from edge to edge. The rangefinder employs an eye-safe FDA Class 1 laser.



The bright red digital display over the target can quickly provide incredible precision at ranges up to 1,600 yards.

10 x 50 LRF BINOCULAR RANGEFINDER

Built to toughest military specs, this new Steiner binocular laser rangefinder gives you an unprecedented combination of accuracy and ease of use. Lightweight but extremely durable, the LRF 10 x 50 is incredibly accurate at distances up to 1,600 yds.— with good visibility, it's accurate to within just a single yard at ranges under 500 yards. A bright, easy-to-read digital display appears at a touch, giving you the precise distance to the target almost instantaneously. The unit also features a scanning mode that's especially helpful with small or moving targets.



10 x 50 – Item no. 398
Weight: 45.9 oz
Field of view: 318 feet @ 1000 yards
Eye relief: 15.8 mm



10 x 42 R TACTICAL

The 10 x 42 R Tactical binocular has been developed as a compact roof-prism tactical surveillance and operations binocular incorporating the newly developed SUMR targeting reticle system.

Steiner is able to offer the observer a smaller, rugged and light weight binocular in a power that matches the favored magnification used in many of the newer 10x military rifle scopes used by SWAT, Army, Air Force and Marine SOF Forces. 10-year limited warranty

SUMR Reticle
The Steiner SUMR (Steiner Universal Mil Reticle). The reticle was designed to offer long distance, large target ranging ability with 5 to 10 mil increments on the outer reticle quadrants that reduce down to single mil, half mil and 0.2 mil spacing in the center of the reticle for smaller targets or greater distances.

10 x 42 R – Item no. 650
Weight: 26.4 oz
Field of view: 315 feet @ 1000 yards
Eye relief: 17.4 mm

TACTICAL/MILITARY

It's getting dark and a few dim lights illuminate the street. Fortunately, your surveillance isn't hampered by the elements as the suspect you're observing comes into clear view about 150 yards away.



7 x 50 / 10 x 50 POLICE

Exceptional brightness for use in all light conditions (over 90% at peak), high resolution and a wide field of view. Equipped with Steiner's Sports Auto-Focus system everything is in focus from 20 yards to infinity once set for the users eyes. Included are a web strap, rain and spray guard for the eyepieces and attached objective lens caps.

7 x 50 - Item no. 646
Field of view: 354 feet @ 1000 yards

Weight: 37 oz
Eye relief: 22 mm

10 x 50 - Item no. 648 (not shown)
Field of view: 300 feet @ 1000 yards

Weight: 36 oz
Eye relief: 17mm



8 x 30 MILITARY R

Compact mil. spec tactical binoculars featuring the U.S. Army M-22 reticle, which can be used in conjunction with a variety of mil. dot or other reticles and riflescopes. This is the model used by many law enforcement and special operations units (they discourage us from telling you which ones), so let's just say these binoculars are ideal for many tactical applications under extreme conditions, especially if you're constantly on the move. This 8 x 30 is lightweight, compact, and fits easily in a coat pocket; brilliant optics deliver excellent performance in low light, and at only 18 oz., their nighttime or low light performance is truly impressive.

8 x 30 - Item no. 481
Field of view: 390 feet @ 1000 yards
Available in 6 x 30: Item no. 461

Weight: 18 oz
Eye relief: 2mm

MILITARY

Whether you're glassing to the next ridge, or down city streets: Many military and tactical spotters are discovering Steiner's high power 80mm binoculars are more comfortable and give a wider field of view, while offering a higher depth of field than a spotting scope.



15 x 80 COMMANDER MILITARY

Big, bright spotting optics built to the highest, most demanding standards, Steiner offers three mil spec models that give you the utmost in reliability and long distance reach in all light conditions. The 15 x 80 Military is available with and without compass. These binoculars were originally developed for perimeter and border patrol applications and are totally waterproof and submersion tested, shock tested, and rubber armored. A tripod mount is also included, but these binoculars are light enough to be hand held. With the 15 x 80 Commander you'll get Steiner's HD stabilized compass and range reticle for determining distance and direction of distant targets and objects. Depth of field is 60 yards out to infinity once focused for your eyes.

15 x 80 with compass - Item no. 416
Field of view: 195 feet @ 1000 yards

Weight: 58 oz
Eye relief: 13mm

15 x 80 (not shown) - Item no. 415
Field of view: 195 feet @ 1000 yards

Weight: 56 oz
Eye relief: 13mm



20 x 80 MILITARY

The 20 x 80 Military puts you at an effective distance of less than 100 yards from one mile-distant targets or other objects. Many spotters and observers are discovering these high power binoculars are easy to use, give them a better view and offer a lot more comfort during extended use than spotting scopes. And the 80-mm objective lenses, combined with Steiner's legendary optics, deliver far superior low-light performance. These binoculars were developed for military and border patrol applications and are mil. spec tough: totally waterproof, shock resistant, and rubber armored. Tripod mount is included, but these models are light enough to be hand held. Depth of field is about 80 yards out to infinity once focused for your eyes.

20 x 80 - Item no. 420
Field of view: 165 feet @ 1000 yards

Weight: 56 oz
Eye relief: 13 mm

MILITARY

Military and Special Operations professionals rely on Steiner Military binoculars to provide clear details on what lies ahead. Built to the highest worldwide military specifications and standards, ready for immediate deployment in all conditions.



7 x 50 MILITARY R

For situations in extreme darkness, the enhanced low light performance of the 7 x 50 Military R has made this the standard binocular for special naval, military and law enforcement units throughout the world. M-22 reticle, and lightweight construction. Meets all military specifications for ruggedness, for a lifetime of high performance.

7 x 50 - Item no. 538 Weight: 37 oz
 Field of view: 385 feet @ 1000 yards Eye relief: 22 mm
 7 x 50 Military R with Laser Filters(LPF): Item no. 539 • New Desert Color Armor: Item no. 540



7 x 50 COMMANDER MILITARY

The 7 x 50 Commander Military is a full featured, multi-role binocular that was designed to be used in a variety of applications, day or night. The Commander features incredible brightness, and a range finding reticle combined with an electronically illuminated, HD-stabilized compass. They feature a 30-year limited warranty.

7 x 50 - Item no. 383 Weight: 39 oz
 Field of view: 385 feet @ 1000 yards Eye relief: 22 mm

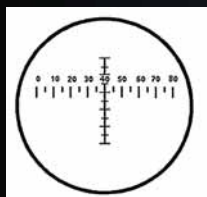


10 x 50 MILITARY R SUMR

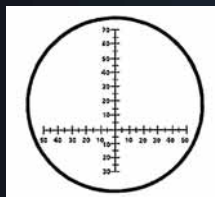
Now featuring the new Steiner Universal Mil Reticle system (SUMR) offering larger mil graduations on the outside of the reticle's posts and with single & sub-mil measuring capability towards the center part of the reticle. Combine the SUMR reticle with the 10x magnification and extraordinary brightness, you'll have the perfect spotter's or marksman's binocular. The 10 x 50 R are a useful tool at the range as they are in real life tactical situations. 10 x 50's are ideally suited for open terrain, desert, mountainous or hilly country, and equipped with a special horizontal grid mil reticle. Like all Steiner military binoculars, they're water and shock proof to Mil std 810E and once the initial focus is set for your eyes, further adjustments for distance won't be necessary.

10 x 50 - Item no. 536 Weight: 36 oz
 Field of view: 300 feet @ 1000 yards Eye relief: 17 mm

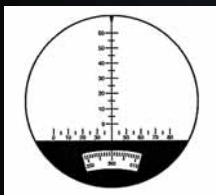
Reticles in Steiner's Military Series



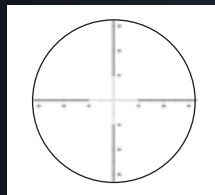
6x30 Military R
(Special order)



8x30/7x50
Military R



7x50 Commander Military
15x80 Commander Military



10x42 R Tactical
10x50 Military R

ACCESSORIES

Although most Steiner models include a case, you may want to select a special case to better suit your needs from the styles below. We also offer different carrying options with a variety of strap and harness systems.

Marine Binocular Float Strap

Floats all Steiner's 7 x 50 binoculars and most others. Safety Orange for enhanced visibility. Comfortable around your neck and shoulders. 55mm wide. Item no. V15015 – Orange.
Item no. 769 – Yellow Clic-Loc® Float strap for Commander V & XP models.
Item no. 768 – Yellow Steiner Float strap for all loop fastening models.



Vero Vellini® Bino-Pal™ Harness and Steiner Clic-Loc® Body Harness System

The Vero Vellini Bino-Pal™ Harness allows for hands free carrying of your binocular. Simply raise your binocular to your eyes for quick viewing and return it to your chest when you're done. Your binocular is securely attached to the adjustable harness and can be removed with a press of the quick release buckles.

Item no. V20024 – Black.
Item no. 984 for Merlin, Predator and Peregrine Clic-Loc® models.
Item no. 986 for Nighthunter XP, and Commander Clic-Loc® models.



Binobag - Small

Padded black ballistic nylon holds all 8 x 30 and 6 x 30 models, also holds older 7 x 35 Steiner binoculars. Item no. 605.



Binobag - Large

Holds 10 x 50 and 7 x 50 short barrel models like Military/Marine, Police, Marine, Commander, and Tactical series. Also holds Commander models with compass. Item no. 606.



15/20x80 Tactical Gear Bag

For 15 x 80 and 20 x 80 Models. Heavy duty ballistic nylon with an attractive brown exterior and durable buckle closing system. Includes quick-release buckled shoulder strap and smooth lined interior compartment with interior accessory pocket. Fits all Steiner 80mm binoculars. Item no. 978 – Color: Brown



Standard Accessories included with Steiner binoculars.

Rain-Guard and Objective Caps

A rain-guard and objective caps are included with all Steiner Military, Marine, Peregrine XP, Merlin, Wildlife Pro, Police, Nighthunter XP and Predator 8 x 30, 12 x 40, 10 x 42, 12 x 42, 8x56 and 10x56.



Steiner Premium Padded Cases

Nearly all Steiner models include a deluxe premium performance case to compliment and protect your Steiner binocular. Most cases also include a case strap. Military and certain sporting models do not include a case. The Steiner website www.steiner-binoculars.com explains the binocular's inclusions in detail.



Clic-Loc® Neoprene Strap

Nighthunter XP, Peregrine XP, Merlin, Wildlife Pro and Predator C5 models include a super-comfortable neoprene neck strap that is cushioned so that the already light-weight binoculars will feel even lighter. The strap features the Clic-Loc® quick-release buckle system and can be removed instantly for cleaning or replacement.





The Binocular-Specialists!

STEINER 
GERMANY

PIONEER Research 97 Foster Rd., Moorestown, NJ 08057 (856) 866-9191 (800) 257-7742 FAX: (856) 866-8615
www.steiner-binoculars.com email to: info@pioneer-research.com

© PIONEER Research 2010 Specifications subject to change without notice. Printed in U.S.A.

Predator, Military/Marine, Nighthunter, Merlin, Peregrine and Pioneer Research are trademarks owned by and used with permission by Pioneer Research.

Item no. 910
\$1.00

