

GARMINTM

Marine Navigation 2009



Contents



Network Displays

- 6 5000 series: GPSmap 5008, 5012 and 5015
- 8 4000 series: GPSmap 4008, 4010 and 4012
- 10 3000 series: GPSmap 3005C, 3006C and 3010C
- 12 Radar and GPS: GMR 18HD and 24HD, GPS 17x
- 14 Radar: GMR 404 and 406

Autopilots and Instruments

- 16 Autopilots and Instruments
- 18 Instruments and Wind Sensor

Standalone Chartplotters

- 22 GPSmap 420 and 420s
- 23 GPSmap 520 and 520s
- 24 GPSmap 525 and 525s
- 25 GPSmap 276C and 278
- 26 GPSmap 620

Handheld GPS

- 28 GPS 72 and 76 / GPSmap 76 and 76S
- 29 GPSmap 76Cx and 76CSx
- 30 Oregon and other Garmin Handhelds

Fishfinders

- 32 How Fishfinders work
- 33 Fishfinder 400C
- 34 Fishfinder 300C
- 35 Fishfinder 160C
- 35 Fishfinder 90 and Fishfinder 140
- 37 Transducers

Garmin Marine Network

- 38 GMS 10 / GSD 21 and 22

Cartography

- 40 BlueChart and BlueChart g2
- 41 BlueChart g2 Vision

Specifications

- 42 Chartplotter Specifications
- 44 Handheld Specifications
- 45 Handheld, BlueChart and Instruments Specifications
- 46 Fishfinder and Sounder Specifications
- 47 Combo Units and Radar Specifications
- 49 Accessories

Glossary

- 51 Glossary, Servicing and Warranty

▶ Marine Navigation



Stylish, elegant, innovative and powerful – the latest marine equipment from Garmin will help you make the most of time spent on the water. With a wide choice of fixed-mount products, handhelds and integrated products, you'll find a solution to suit your craft and your requirements.

From chartplotters to fishfinders, radars to marine cartography, Garmin designs and manufactures a diverse range of stylish and modern products. Detail-rich satellite photomapping, lightning-fast graphics and simple, menu-driven operations take the worry out of staying on course. Coupled with plug-and-play networking functionality, you can tailor a solution that can be driven direct from your chartplotter screen.

For business or pleasure, you can rely on Garmin technology wherever you go, whatever the course.





▶ Network Displays

Where better ideas hit the water

Powerful new features. A sleek new look. More options and innovations than you've ever seen all at once. That's how Garmin is kick-starting a whole new wave of innovation in marine electronics.

The 5000 series with its unique Touchscreen technology makes point-and-go navigation simple and intuitive.

Our growing 2008 chartplotter family combines robust technology, detail-rich satellite imagery, lightning-fast graphics and simple menu-driven operation to take the worry out of staying on course. New digital radars and sounders add even more depth and insight to the mix. Plus, the latest Garmin plug-and-play networking capabilities make it easy to connect and control a whole array of remote sensors, datalinks and more – right from your chartplotter screen.

5000 Touchscreen series

GPSmap® 5000 series



▶ GPSmap® 5008 | 5012 | 5015



Touchscreen



Network Capable



Waterproof



2-Year Warranty



Waypoints



Sonar Compatible



BlueChart g2 Vision Compatible



WAAS EGNOS enabled



AIS Compatible



VGA Output



Radar Compatible



NMEA 2000



Video Input



NMEA 0183

The new 5000 series Touchscreen displays feature brilliant high resolution screens housed in a stylish but robust new waterproof design. Fully sunlight viewable, they're built to withstand the elements.

The Touchscreen menu makes operating your 5000 display unbelievably quick and easy – no more moving cursors and looking for buttons, just touch the screen and follow the prompts. Alternatively use an optional wireless mouse or remote control.

The 5000 Touchscreen displays save space too. You can fit the new 5015 with its 15-inch display in the same space as a 12-inch push button display. And with a choice of the 12-inch 5012 and 8 inch 5008, you will find room for a Touchscreen 5000 on any boat.

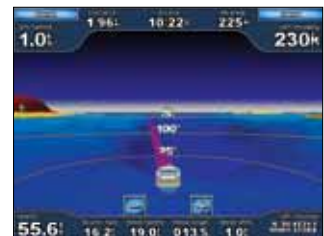
Fully NMEA 2000 compliant, the 5000 series can connect to a wide range of compatible sensors, engines and GMI 10 instruments to monitor important navigation, fuel, engine and weather information.

For an unrivalled view of your surroundings, connect radar, sonar and Garmin revolutionary BlueChart g2 Vision cartography to give MARPA, true 3D imaging above and below the waterline, high resolution satellite and aerial photographs as well as Garmin unique marine AutoGuidance technology (see page 41 for full details).

Package Includes:

- GPSmap 5008, 5012 or 5015
- Flush mount
- Bail mount*
- GPS 17 with pole mount adapter†
- Power cable
- NMEA 0183 cable
- Video cable assembly
- Marine grommet kit
- Protective front cover
- Owner's manual
- Installation instructions

* 5015 flush mount only
† 5015 – GPS not included



Mariner's Eye 3D



Fish Eye 3D



Engine Monitoring

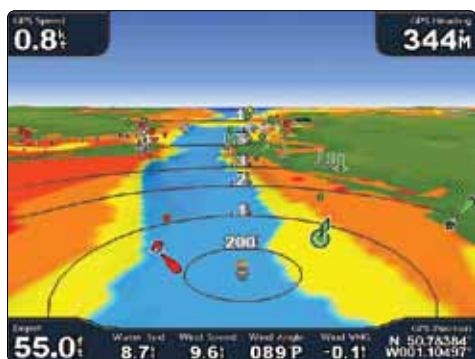
Typical Networked System



Satellite Image Overlay – Combine high-resolution satellite images over land or water cartography for a clear view of your surroundings



Aerial Photographs – Detailed high-resolution photographs of ports and harbours



Mariner's Eye 3D – View land and sea contours in true 3D



Homepage Menu – Nothing is easier than the Garmin intuitive Touchscreen menu and Navigation features



15" GPSmap 5015



12" GPSmap 5012



8" GPSmap 5008



Wireless Remote Control



Wireless Mouse

KEY features

5000 Series Network Chartplotters

Fast and simple Touchscreen operation

Choice of 15", 12.1" or 8.4" models in a low profile casing

Fully networkable with Garmin Radar, Sonar, Instruments and other 4000 and 5000 displays

NMEA 2000 and NMEA 0183 compliant

Worldwide Satellite Basemap

Optional wireless mouse and remote control

GPS antenna included (5008 and 5012 only)

Optional g2 Vision card offers:

- AutoGuidance
- 3D Mariner's Eye view
- 3D Fish Eye view
- High Resolution Satellite images
- High Resolution Aerial photos
- Fishing Charts

See page 41 for details



Go to page 43 for full product specifications and comparisons

4000 series



▶ GPSmap® 4008 | 4010 | 4012

With a stylish new design and powerful features, the 4000 Series provides all the information you will need at the touch of a button. Fully network capable, you can easily add radar and sonar, as well as connect to other 4000 or 5000 multi-function displays or GMI 10 colour instruments.

Available with a choice of 12-inch (4012), 10.4-inch (the new 4010) and 8-inch screens, the displays can be flush mounted or bail mounted to fit most navigation areas. Each screen is fully sunlight viewable, and waterproof to IPX 7 so you can install displays in the flybridge or cockpit as well as below decks.

With an alphanumeric keypad and intuitive soft key menu, using a 4000 plotter is simple. An optional wireless remote control is also available.

Like the touchscreen 5000 series, the 4000 chartplotter comes with a worldwide satellite basemap. With a BlueChart g2 Vision card, it will display true 3D imaging above and below the water line, high-resolution satellite and aerial photographs and coastal maps up to five miles inland. With g2 Vision, marine AutoGuidance technology, the 4000 can instantly calculate and display the best route to your destination, avoiding charted obstacles and shallows.

Package Includes:

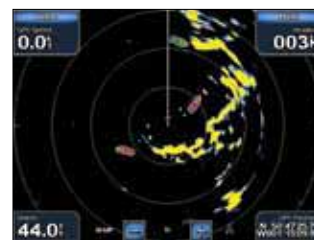
- GPSmap® 4008, 4010 or 4012
- Flush mount
- Bail mount
- GPS 17 with pole mount adapter
- Power cable
- NMEA 0183 cable
- Video cable assembly
- Marine grommet kit
- Protective front cover
- Owner's manual
- Installation instructions



Satellite Image overlay



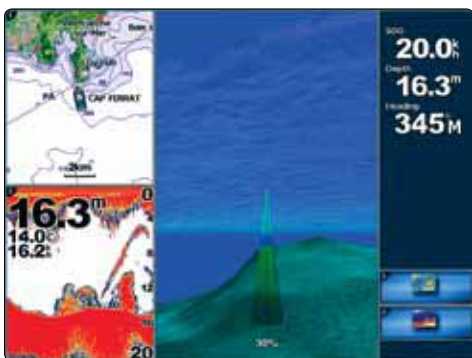
Fish Eye 3D



Radar

-  Network Capable
-  Waterproof
-  Waypoints
-  BlueChart g2 Vision Compatible
-  2-Year Warranty
-  AIS Compatible
-  WAAS EGNOS enabled
-  Radar Compatible
-  VGA Output
-  Video Input
-  NMEA 2000
-  Sonar Compatible
-  NMEA 0183

Typical Networked System



Custom Combination – Combine your key pages of information on a single screen



Mariner's Eye 3D – High definition 3D graphics bring land and bottom contours to life



Aerial Photography – Preview your next port of call with high resolution photographs



Intuitive Smart Menu – Soft keys make it quick and simple to get the most from your 4000 system



12" GPSmap 4012



10" GPSmap 4010



8" GPSmap 4008



Wireless Remote Control

KEY features

4000 Series Network Chartplotters

Choice of 12.1", 10.4" or 8.4" display size

Fully networkable with Radar, Sonar, Instruments and other 4000 and 5000 displays

NMEA 2000 and NMEA 0183 compliant

Worldwide Satellite Basemap

Optional wireless remote control

GPS antenna included

Optional g2 Vision card offers:

- AutoGuidance
- 3D Mariner's Eye view
- 3D Fish Eye view
- High Resolution Satellite images
- High Resolution Aerial photos
- Fishing Charts

See page 41 for details



Go to page 43 for full product specifications and comparisons

3000 series



▶ GPSmap® 3005C | 3006C | 3010C

Designed for a smaller boat or as a secondary unit on larger craft, the GPSmap 3005C offers powerful GPS chartplotter, sonar and radar capabilities when connected to the Garmin Marine Network. With its smaller footprint, this unit is ideal for serious anglers or for pleasure boaters.

The GPSmap 3005C also works well as a secondary unit for a boat already rigged with the Garmin Marine Network. The GPSmap 3005C features a brilliant five-inch (diagonal) sunlight readable, 256-colour, 640 x 480-pixel VGA display. It has a single data card slot and three NMEA ports, and accepts BlueChart or BlueChart g2 cartography.

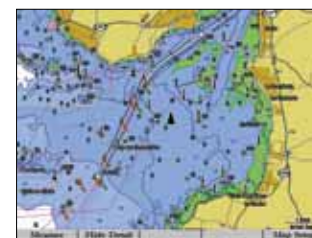
Fully compatible with the Garmin Marine Network, the GPSmap 3006C and 3010C are sunlight readable, colour multifunctional displays. Both units feature a 256 colour, 640 x 480-pixel VGA display. The screen size for the GPSmap 3006C is 6.4-inch diagonal and the GPSmap 3010C is 10.4-inch diagonal.

They are powered by a high-speed processor and graphics controller for fast redraw of charts. The entire system is waterproof and completely plug-and-play – automatically detecting all peripherals once they're connected.

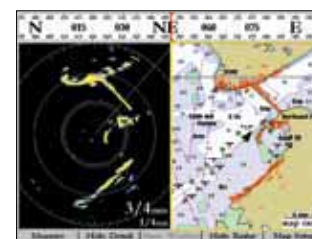
Dual card slots accept Garmin BlueChart g2 cartography. It is also possible to add optional sonar and radar for even greater functionality.

Package Includes:

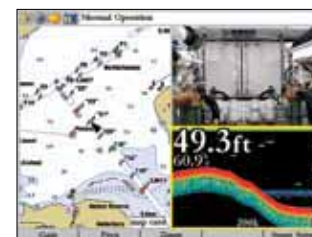
- GPSmap 3005C, 3006C or 3010C
- Basemap: Worldwide Marine
- GPS 17 WAAS-enabled sensor
- Power / data cable
- Bail mount
- Protective cover
- Template for flush mounting
- Owner's manual
- Quick reference guide
- Installation guide















BlueChart g2 detail



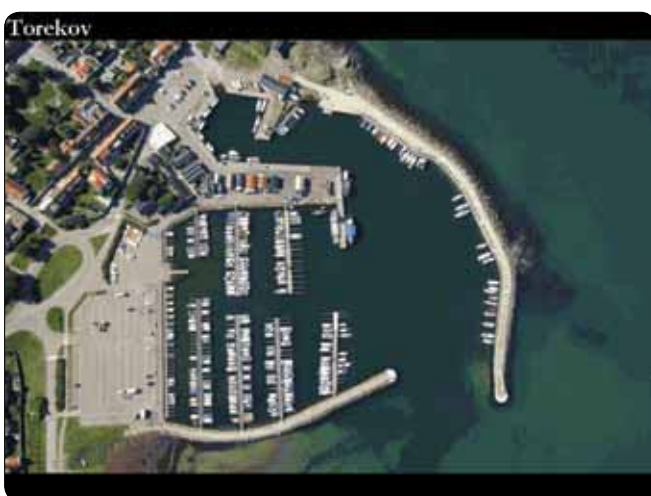
Radar / Map split



View Sounder, Video, Mapping

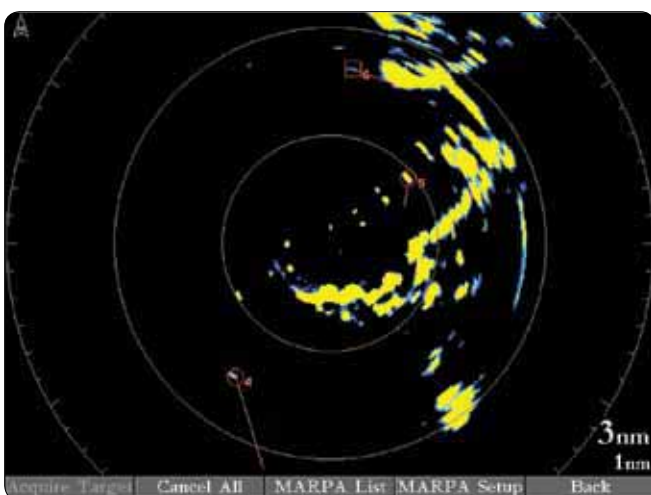
-  Network Capable
-  Waterproof
-  Waypoints
-  BlueChart g2 Compatible
-  AIS
-  2-Year Warranty
-  Radar Compatible
-  WAAS EGNOS enabled
-  Video
-  VGA Output
-  Sonar Compatible
-  NMEA 0183

Typical Networked System



BlueChart g2 aerial photo

Accepting either Bluechart or Bluechart g2 the 3000 series will display Garmin exclusive navigational data in a clear and detailed way. Maximise the potential of the unit with g2, enabling features such as Mariner's Eye 3D, aerial photography of harbours and marinas as well as tidal and current information graphs.



Radar

Using the 3000 series with one of the innovative Garmin range of marine Radars couldn't be easier. Simply connect the two using the plug-and-play marine network cable and your unit will automatically detect and be able to display the radar information. MARPA targets are easily acquired with the simple menu system using the soft-keys functions at the bottom of the display. Optional Heading Sensor required for MARPA.

KEY features

3000 Series Network Chartplotters

Choice of 10", 6" or 5" display

AIS ready

High-speed RISC processor and graphics controller for fast screen redraw

Three data ports allow for NMEA 0183 and proprietary Garmin Marine Networking

Two composite video inputs for on-board cameras; 1 VGA PC monitor video output

Add sonar with optional GSD 21/22 remote sounder

GPS antenna included

Optional BlueChart g2 card offers:

- Perspective View
- Tidal Current Graph
- Colour Aerial Photographs
- Coastal Roads and POIs

See page 40 for details



Go to page 42 for full product specifications and comparisons

High Definition Radar

NEW



The Garmin GMR 18 HD and GMR 24 HD radars are the first marine radomes to combine digital precision scanning with High Definition detail. The compact 18-inch and sensitive 24-inch radomes help you scan the seas and scrutinise the marine landscape with supreme accuracy. With a 4kW transmitting force in a small 18" dome, the GMR 18 HD

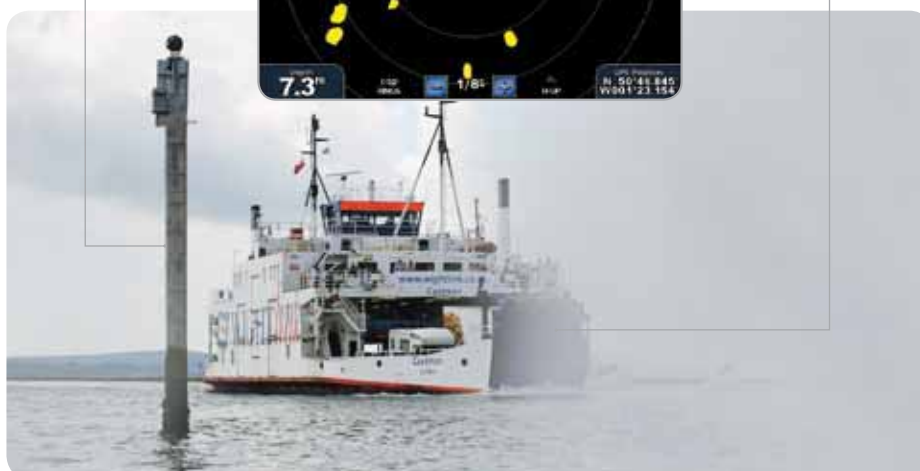
rivals larger radar. Up to 48 nautical miles (GMR 24 HD) range means you can reach further and achieve sharper discrimination, even on small targets. The sleek radome design contains advanced signal processing for a precise, easy-to-read signature without the need for a separate radar display. Add the GMR HD to your Garmin Marine Network

to further enhance your nautical perception. Dynamically present and interrogate radar returns on a Garmin chartplotter or multi-function display and add optional Mini Automatic Radar Plotting Aid (MARPA) target tracking to avoid traffic on the water.

Know what's ahead...



...whatever the conditions





GMR™ 18 High Definition Radar

- 18-inch diameter radome, 8.9 inches high
- 4kW power output
- 24/30 RPM dual rotation speed
- Weight 15.8 lbs
- Beam width 5.0° horizontal, 25° vertical
- Range 36nm maximum / 20m (66 feet) minimum
- Less than 5 db receiver down converter noise
- Supports MARPA with optional heading sensor for collision avoidance
- 100 knot wind performance
- 10.5-35 vdc input voltage
- Waterproof IEC 60529 IPX-7
- Two-year warranty

In the box

GMR 18 HD, 15m power/marine network cable, mounting hardware kit, marine network cable connector kit and installation instructions



GMR™ 24 High Definition Radar

- 24-inch diameter radome, 9.8 inches high
- 4kW power output
- 24/30 RPM dual rotation speed
- Weight 20.1 lbs
- Beam width 3.6° horizontal, 25° vertical
- Range 48nm maximum / 20m (66 feet) minimum
- Less than 5 db receiver down converter noise
- Supports MARPA with optional heading sensor for collision avoidance
- 100 knot wind performance
- 10.5-35 vdc input voltage
- Waterproof IEC 60529 IPX-7
- Two-year warranty

In the box

GMR 24 HD, 15m power/marine network cable, mounting hardware kit, marine network cable connector kit and installation instructions



HD radar 1/4 mile range



HD radar 1/2 mile range

GPS 17x™ High Sensitivity Receiver/Antenna

A new generation of high sensitivity GPS receiver that won't lose GPS reception even in poor conditions, this antenna is even available with an optional below deckhead mount. Available with NMEA 2000 or 0183 outputs.



NEW

Radar: GMR 404 and 406





Radar screen



Radar overlay on map



MARPA (Mini Automatic Radar Plotting Aid)

KEY features

GMR 404 and 406

X-band digital colour display radars

Automated tuning and simple plug-and-play installation

Overlay radar information onto charts – plus MARPA target tracking

Power output: 4kW

GMR 404 - 1.8° beamwidth

GMR 406 - 1.18° beamwidth

Dual-speed rotation 24/48 rpm

Maximum range 72 nm

Waterproof to IPX6



Network Capable



2-Year Warranty

▶ GMR 404 | 406

Ships. Shores. Birds. Whatever you're scanning on radar, you'll see it sooner – and in sharper detail – when you scan with the Garmin GMR 404 or 406 open array antennas. Both are powerful 4-kilowatt X-band digital radars that combine 72 nm maximum range with high-definition targeting and selectable 24 or 48 rpm antenna rotation speeds.

The GMR 404 is a 4-foot scanner with 1.8° beamwidth for superior target separation. The GMR 406's 6-foot "big sweep" antenna takes beamwidth down to 1.18° for even more detail. Any network-compatible Garmin chartplotter can double as your radar screen. Six pulse length/PRF settings help optimise target returns at all range scales. For radar plotting and collision avoidance, MARPA target tracking is optionally available (heading sensor required).

Package Includes:

- GMR 404 or 406
- Pedestal
- Carrying strap
- Field material kit
- Marine network data card
- GMR 404/406 cable
- Field install cable end kit
- Printed material kit

Go to page 47 for full product specifications and comparisons

Autopilots and Instruments



GHP™ 10 Autopilot

The GHP 10 is a revolutionary new autopilot for power boats up to 70ft LOA with any type of hydraulic steering – inboards, outboards or stern drive. Developed using aerospace technology, with a rate gyro included as standard, the GHP 10 delivers tight course keeping and smooth turns in any sea conditions.

GHP 10's patented Shadow Drive technology gives you the freedom to steer the boat by hand with the pilot still engaged. To return control to the pilot simply steady on your course and let go of the wheel. It's quick, safe and simple – there's no need to reach for knobs or buttons first – just steer when you want to and let the pilot take control when you don't.

This wireless remote places functionality of your GHC 10 autopilot into the palm of your hand. For the ultimate in onboard freedom and convenience, the GHC 10 remote offers on-the-move steering and mode control at distances up to 45 feet from the primary helm unit, depending on the installation of the GHC. Rugged and waterproof, this compact remote features a built-in digital display, bright backlit screen and simple, ergonomic keypad operation.

- 2
2-Year Warranty
- NMEA
NMEA 2000
- NMEA
NMEA 0183



Day mode



Night mode



GHC™ 10 Wireless remote

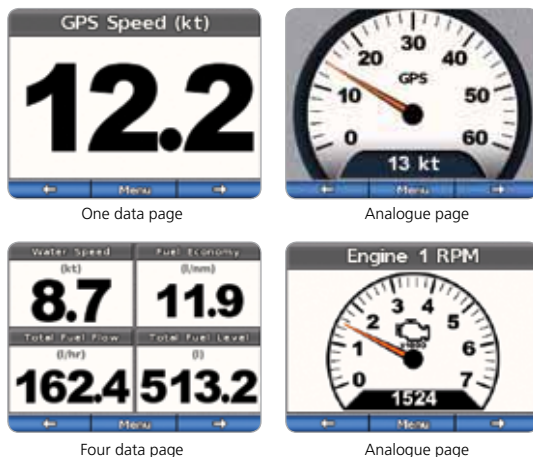
This wireless remote places functionality of the GHC 10 autopilot into the palm of your hand. For the ultimate in onboard freedom and convenience, the GHC 10 remote offers on-the-move steering and mode control at distances up to 45 feet from the primary helm unit.

Typical Networked System



GMI™ 10 Digital Instrument Colour Display

With its sleek new design and stunning colour screen, the versatile GMI 10 colour instrument is the perfect companion to your chartplotter or multi-function display. Easily fitted to new or existing systems, GMI 10 instruments connect to a wide range of sensors, providing clear Navigation, Weather, Fuel, and Engine information on one easy-to-see display.



The intuitive menu and bright full-colour screen not only allow you to select which information you view, it even lets you choose how you see that information – as digits, gauges or historic graphs. GMI 10 is a multi-function display so you can install just the one instrument on your boat – or as many as you like.



Garmin Intelliducer

The new range of Depth Intelliducers is available in two variants to compensate for different angles of hull deadrise (0 to 12 degrees and 13 to 24 degrees). This provides more accurate data and minimises the risk of losing depth readings as the boat rolls or heels.



GFS™ 10

GFS 10 is a new Fuel sensor that connects to Garmin chartplotters and instruments to provide Fuel Flow and Fuel Level data, enabling the calculation of range, economy and fuel remaining information.

KEY features

GHP™ 10 Autopilot

Revolutionary new autopilot for hydraulic steered boats up to 70ft LOA

Easy to use GHC 10 control unit with bright full-colour display.

Network up to three GHC 10 control units on your boat

Shadow Drive technology allows you to steer even when the pilot is engaged

Tight course keeping and smooth turns in all sea conditions

Easy-to-use patterns for MOB, search and fishing manoeuvres

GMI™ 10 Digital Colour Instruments

Super bright, easy to read colour display

Fully sunlight viewable and adjustable night mode.

Quick access to important information using preset or custom data pages

View up to four sets of data on a single screen in digital, gauge or graph styles.

Easy to install to new or existing systems

NMEA 2000 and NMEA 0183 compliant

Marine instruments and **WIND SENSOR**

NEW



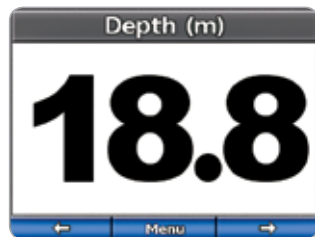
GMI™ 10 Digital Instrument Colour Display

With its sleek new design and stunning colour screen, the versatile GMI 10 colour instrument is the perfect companion to your chartplotter or multi-function display. Easily fitted to new or existing systems, GMI 10 instruments connect to a wide range of sensors, providing clear Navigation, Weather, Fuel, and Engine information on one easy-to-see display.

The intuitive menu and bright full-colour screen not only allow you to select which information you view, it even lets you choose how you see that information – as digits, gauges or historic graphs. GMI 10 is a multi-function display so you can install just the one instrument on your boat – or as many as you like.



GPS Speed data page



Depth data page

GMI™ 10 Screen Views

	Information Available	Sensor Required
Fuel	Total Fuel Flow Rate	Fuel Sensor
	Total Fuel Level	Fuel Sensor
	Cruising Range	Fuel Sensor
	Fuel Economy	Fuel Sensor
	Fuel Level	Fuel Sensor
	Tank 1	Fuel Sensor
	Tank 2	Fuel Sensor
	Engine	Battery Voltage
	Hours	NMEA 2000 compatible Engine
	Engine RPM	NMEA 2000 compatible Engine
	Oil Pressure	NMEA 2000 compatible Engine
	Temperature	NMEA 2000 compatible Engine
	Trim	NMEA 2000 compatible Engine
Navigation	Course Made Good	GPS Antenna
	Distance Made Good	GPS Antenna
	Waypoint Name	GPS / Chartplotter
	Distance to Waypoint	GPS / Chartplotter
	Off Course	GPS / Chartplotter
	Desired CoG	GPS / Chartplotter
	Heading	Heading Sensor / Autopilot
	Course over Ground	GPS Antenna
	GPS Speed	GPS Antenna
	Position	GPS Antenna
Trip	Odometer	GPS Antenna
	Trip Odometer	GPS Antenna
	Average GPS Speed	GPS Antenna
	Maximum GPS Speed	GPS Antenna
	Weather	Barometer
	Air Temperature	GWS 10 Wind Sensor
	Wind Speed	GWS 10 Wind Sensor
	Wind Direction	GWS 10 Wind Sensor
Sailing	Apparent Wind Speed	GWS 10 Wind Sensor
	Apparent Wind Angle	GWS 10 Wind Sensor
	True Wind Speed	GWS 10 Wind Sensor
	True Wind Angle	GWS 10 Wind Sensor
	VMG to Wind	GWS 10 Wind Sensor
	VMG to Waypoint	GWS 10 Wind Sensor
Water	Depth	Depth Transducer
	Temperature	Temperature Sensor
	Speed through Water	Speed Transducer (Intelliducer)
System	Time	GPS Antenna
	Date	GPS Antenna
	Voltage at Unit	None





GWS™ 10 Wind Sensor on GMI™ 10 Display

The new GWS 10 wind sensor uses classic wind vane topology to detect wind direction and an anemometer for wind speed measurement. With barometric pressure and air temperature data, it's a complete mini weather station. The GWS 10 is fully networkable, with a "smart" transducer for data output via NMEA2000.

- Provides wind speed and wind direction data to compatible NMEA 2000 displays (example: GMI 10)
- Shows barometric pressure and air temperature data
- Provides data such as Apparent Wind Angle, True Wind Angle*, Wind VMG*, Tack Heading*, Ground Wind*, Pressure, Pressure Trend*, Air Temperature, Set*, Drift*
- Features 10Hz wind direction output to create the smoothest graphical needle movement on the market today
- Wind Speed Range: 0-99 knots
- Input voltage: 9-16V

*Calculated by Garmin GMI 10 display

In the box

GWS 10 wind sensor, mounting hardware, NMEA 2000 backbone cable, inline terminator, documentation, GMI 10 marine instrument

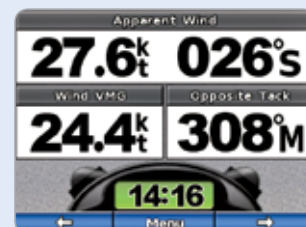
Optional accessories

- Replacement Cup Anemometer
- Replacement Wind Vane
- Replacement GWS 10 Core

Plus NMEA 2000 accessories such as field installable connectors, T-connectors, terminators etc.



Apparent wind direction and speed – kts



Apparent digital wind speed and direction



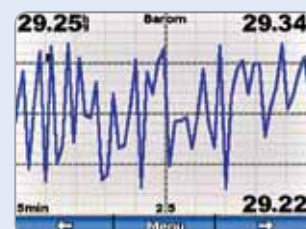
Apparent close hauled wind – kts



Apparent wind speed trend graph



True wind direction and speed – kts



Barometric pressure graph





▶ Standalone Chartplotters

Big capability in a smaller package

Whether it's open seas, deep blue, murky green or crystal clear, Garmin chartplotters and sounders will guide you on your way.

With intuitive menus, high-resolution displays, and network capabilities, Garmin chartplotters can pinpoint your location anywhere in the world. Their built-in basemaps provide accurate coastline reference – which gets even better with detailed Garmin BlueChart marine cartography.

Garmin chartplotter/sounder units offer the perfect combination for those who want both GPS navigation and sonar information. The powerful built-in technology allows you to penetrate the depths with precision and the split screen functionality lets you view both sets of data at the same time (or you can opt for full-screen views of plotter and sounder data separately).

For guidance, safety and situational awareness, get a Garmin onboard.

400 series



Map



Map and Sonar

▶ GPSmap® 420 | 420s

The Garmin GPSmap 420 and GPSmap 420s are designed for boaters who want a compact chartplotter that is ready to launch straight out of the box.

They feature 4-inch QVGA displays, a redesigned user interface for easy selection of modes and features, with a worldwide satellite imagery basemap.

Plug-in optional BlueChart g2 Vision cards add true 3D-view detailed mapping capabilities, above and below the waterline along with a host of other features (see page 43 for BlueChart g2 Vision features).

The built-in sounder on the GPSmap 420s can scan as deep as 1500 feet/ 457 metres (with dual frequency transducer) to clearly paint depth contours, fish targets, structure and more. It is also CANet capable, allowing sounder data to be shared with other plotter displays onboard.

Package Includes:

- GPSmap 420 or 420s*
- Unit cover
- Tilt/swivel mount
- Cables
- Owner's manual

*Please Note: 420s package is supplied with transducer.



2-Year Warranty



Waterproof



Waypoints



BlueChart g2 Vision Compatible



AIS



CANet



Sonar



WAAS EGNOS enabled



NMEA 0183

KEY features

GPSmap® 420 and 420s

- 4-inch QVGA display
- Garmin sonar compatible (420)
- Supports AIS and DSC

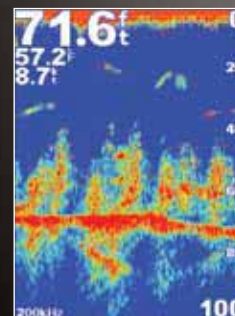
Optional g2 Vision card offers:

- AutoGuidance
- 3D Mariner's Eye view
- 3D Fish Eye view
- High Resolution Satellite images
- High Resolution Aerial photos
- Fishing Charts

See page 41 for details

Go to page 42 for full product specifications and comparisons

500 series



Sonar



Map Page

▶ GPSmap® 520 | 520s

2

2-Year Warranty



Waterproof



Waypoints



BlueChart g2 Vision Compatible



AIS



CANet



Sonar



WAAS EGNOS enabled



NMEA 0183

The GPSmap 520 combines performance and value with a bright 5-inch QVGA colour display and easy-to-use interface. It has satellite-enhanced worldwide basemap imagery for even more detail.

An SD card slot makes it easy to plug in additional BlueChart g2 Vision cards for an even better view of your surroundings. Optional features include AutoGuidance to suggest the safest routings plus high-resolution aerial photomapping for the ultimate in realistic on-chart navigation (see page 43 for Bluechart g2 Vision features).

The GPSmap 520s has a built-in analogue sonar with split-screen capability so you can view map and sounder data simultaneously. It can scan as deep as 1500 feet/ 457 metres (with dual frequency transducer).

It is also CANet capable, allowing sounder data to be shared with other plotter displays onboard.

Package Includes:

- GPSmap® 520 or 520s*
- Unit cover
- Tilt/swivel mount
- Cables
- Owner's manual

*Please Note: 520s package is supplied with transducer.

KEY features

GPSmap® 520 and 520s

- 5-inch QVGA display
- Garmin sonar compatible (520)
- Supports AIS and DSC

Optional g2 Vision card offers:

- AutoGuidance
- 3D Mariner's Eye view
- 3D Fish Eye view
- High Resolution Satellite images
- High Resolution Aerial photos
- Fishing Charts

See page 41 for details

Go to page 42 for full product specifications and comparisons

500 series



Home Page Menu



Map and Sonar

2

2-Year Warranty



Waterproof



Waypoints



BlueChart g2 Vision Compatible



AIS



CANet



Sonar



WAAS EGNOS enabled



NMEA 0183

▶ GPSmap® 525 | 525s

The GPSmap 525 and GPSmap 525s offer the brightest, sharpest, most colourful graphics you've ever seen on a 5-inch screen. With a sunlight-readable VGA display you'll always have a clear view.

They offer exceptional detail, fast redraw rates and Mariner's View (with optional BlueChart g2 Vision card).

The GPSmap 525s also gives you 1kW digital sonar capability with a scan depth of up to 2000 feet / 610 metres. It's CANet capable, allowing sounder data to be shared with other plotter displays on your boat.

Your basemap can also be enhanced with the optional BlueChart g2 Vision card, which provides high-resolution aerial reference photos for help navigating tricky harbours and channels – or locating spots like area marinas, fuel stops or restaurants (see page 41 for BlueChart g2 Vision features).

Package Includes:

- GPSmap 525 or 525s*
- Unit cover
- Tilt/swivel mount
- Cables
- Owner's manual

*Please Note: 525s package is supplied with transducer.

KEY features

GPSmap® 525 and 525s

- 5-inch VGA display
- High Resolution VGA screen
- Garmin sonar compatible (525)
- Supports AIS and DSC

Optional g2 Vision card offers:

- AutoGuidance
- 3D Mariner's Eye view
- 3D Fish Eye view
- High Resolution Satellite images
- High Resolution Aerial photos
- Fishing Charts

See page 41 for details





- 1-Year Warranty
- Waterproof
- 3000 Waypoints
- 15hrs Battery
- BlueChart g2 Compatible
- BlueChart Compatible
- Sonar
- WAAS EGNOS Enabled
- NMEA 0183

▶ GPSmap® 276C | 278

The GPSmap 276C is a portable, colour, dual-use chartplotter offering both marine and road navigation for the best of both worlds.

It features a 3.8-inch diagonal screen, adjustable marine mounting bracket and LED backlight. The BlueChart night mode makes it easier to view in dark or dusky conditions. For use in the car, the optional automotive navigation kit offers turn-by-turn guidance with voice prompts while driving.

The GPSmap 278 offers preloaded European street mapping in a portable chartplotter so it is equally well suited for use in the car or on the water. Just select a destination on land and get automatic routing with voice-prompted turn-by-turn directions. There is a full UK postcode search facility.

It features a 3.8-inch diagonal screen, automotive mount, adjustable marine mounting bracket and LED backlight.

Optional BlueChart g2 cards offer even more detail such as Marine Charting and aerial photography. Both the GPSmap 276C and 278 are waterproof (IPX7 standard).

Package Includes:

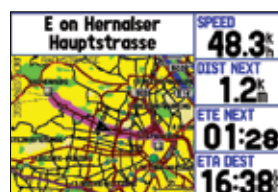
- GPSmap 276C or 278
- Atlantic Basemap
- USB-PC interface cable
- Power/data cable
- Marine mount
- Rechargeable lithium battery pack
- AC adapter
- Trip & Waypoint Manager CD
- Manual
- Quick-start guide
- GPSmap 278 only:**
- Unlocked City Navigator DVD
- 12-volt adapter with speaker
- Friction mount
- Automotive mount



BlueChart detail



Split screen



Street detail

KEY features

GPSmap® 276C and 278

- European street level maps pre-loaded (278 only)
- Garmin sonar compatible
- Audible alarms
- Tide tables
- Automatic routing (turn-by-turn routing on roads)
- Headphone jack/audio line-out
- Portable
- Automotive/motorcycle-friendly

Optional BlueChart g2 card offers:

- Perspective View
- Tidal Current Graph
- Colour Aerial Photographs
- Coastal Roads and POIs

See page 40 for details

GPSMAP® 620 **NEW**

The Hybrid Marine and Automotive GPS

GPSmap® 620



Navigate by sea and land with GPSMAP 620. This dual-personality navigator is a full-featured marine chartplotter with a dedicated automotive mode that kicks in when you're on shore. Packed with elements from the award-winning GPSMAP 5000 marine touchscreen series and the popular nüvi in-car sat-nav range, this waterproof portable device has a high-sensitivity GPS receiver and super-bright 5.2-inch WVGA touchscreen

display. Simply tap and drag through a host of intuitive menus and features. With optional BlueChart g2 Vision charting, GPSMAP 620 recognises whether it's in the included marine mode or optional automotive mode to automatically activate the appropriate mode. In marine mode it presents chart features such as shaded depth contours, port plans, wrecks and restricted areas, "view-from-space" depictions of shorelines and other surface

features. With BlueChart g2 Vision data it also provides 3D Mariner's Eye View above the waterline, Fish Eye View below and Auto Guidance technology that searches chart data to suggest the best passage. Once transferred to the car, with optional City Navigator road maps, GPSMAP 620 transforms into a robust automotive navigator, with a worldwide routable basemap containing major cities and routes.



GPSMAP® 620 hybrid Marine and Automotive GPS

- Large 5.2" diagonal WVGA touchscreen display (800 x 480 pixels)
- Unit dimensions: 5.9" x 4" x 1.9" (151 x 102.5 x 47.3mm)
- Weight 1.08lbs (17.3oz)
- High-sensitivity GPS receiver
- Waterproof: IPX7
- Preloaded worldwide satellite basemap and worldwide automotive routable basemap
- Removeable Lithium-ion battery - lasts up to 13 hours depending on usage

MARINE MODE

- Fully supports optional BlueChart g2 Vision charting
- NMEA 0183 input and output (X2)
 - NMEA Wind features/Sailing console
 - NMEA Depth, temperature, water speed
 - DSC support
 - AIS (requires 38.4k baud serial)

AUTO MODE

- Compatible with optional City Navigator NT road maps
- Turn-by-turn directions with voice guidance
- Text-to-Speech – announces road and place names as you approach
- Cyclops – avoid major accident areas as well as fixed and mobile cameras

In the box

- GPSMAP 620
- Lithium-ion battery pack
- Marine mount with power/data cable
- AC charger
- USB cable
- Protective cover
- Owner's manual
- Quick reference guide
- Installation instructions

Accessories

- BlueChart g2 Vision card
- City Navigator NT card
- Automotive mount with power cable
- Protective cover
- Automotive friction mount
- Lithium-ion battery pack
- AC adapter cable
- Carrying case



Marine navigation screen



Marine home screen



3D Fish eye view



Compass screen



Auto home screen



Auto navigation screen





Waterproof



Waypoints



Battery



WAAS EGNOS Enabled



NMEA 0183



1-Year Warranty

▶ GPS 72 | 76

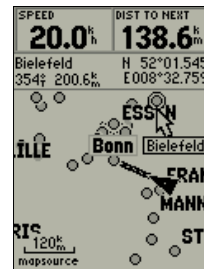
The mariner-friendly GPS 72 is WAAS-enabled for accuracy to within 3 metres and features a large screen and easy-to-use buttons. The GPS 72 floats in water, and it is IPX7 waterproof to withstand the accidental dunk or splash in water. Whether on water or land, the GPS 72 can save up to 500 of your favourite places in memory and point you to your destination (no street or terrain maps).

The GPS 72 is preloaded with worldwide cities as well as marine navigation aids, including lights, buoys, sound signals and day beacons. It also has an extra megabyte of internal memory, so you can load points of interest from optional MapSource disks. If you're into boating, hunting or fishing, you can use the 72's built-in celestial data, which includes tide information, sunrise/sunset times and a hunting and fishing calendar.

In addition to the features of the GPS 72, the GPS 76 handheld has an external antenna connection so that the unit can be used below deck and a sharp, four-level greyscale screen for excellent separation and contrast.

Package Includes:

- GPS 72 or 76
- Database: Marine Point
- PC interface cable (GPS 76)
- Wrist Strap
- Quick start guide
- Owner's manual



Map screen



3D highway

▶ GPSmap® 76 | 76S

The GPSmap 76 and 76S are ideal for use on the water. They are IPX7 waterproof and they float. Both can save up to 1000 of your favourite places in memory and create a straight-line route to your destination.

Preloaded with worldwide cities as well as marine navigation aids, including lights, buoys, sound signals and day beacons, they are a useful aid during marine excursions. The GPSmap 76 has 8 megabytes of internal memory; the GPSmap 76S has 24, so you can load data from optional MapSource software including BlueChart mapping. If you're into boating, hunting or fishing, you can use the built-in celestial data, which includes tide information, and sunrise/sunset times.

The GPSmap 76S also has a built-in electronic compass that provides bearing information even while you're standing still and a barometric altimeter to track changes in pressure to pinpoint your precise altitude. It can save up to 1000 waypoints in memory.

Package Includes:

- GPSmap 76/76S
- PC interface cable
- Wrist Strap
- Quick start guide
- Owner's manual



BlueChart detail



Barometric altimeter



1-Year Warranty



Waterproof



Waypoints



Battery



BlueChart Compatible



WAAS EGNOS Enabled



NMEA 0183

▶ GPSmap® 76Cx | 76CSx

The GPSmap 76Cx and 76CSx are colour navigators for land and water with the ability to store up to 1000 Waypoints.

The high-sensitivity GPS receiver acquires satellite signals quickly and tracks your location in challenging conditions. A colour TFT display makes it easy to distinguish details on the screen in any kind of lighting. Also included is a removable microSD card which stores up to 128 megabytes of additional map data. This means you can just plug in topographical and street-level mapping as well as marine BlueChart information so you can travel from road, to the trail, to the water with one unit.

Like the rest of the series, the GPSmap 76Cx is IPX7 waterproof and floats in water.

The GPSmap 76CSx adds a built-in electronic compass to display accurate heading and a barometric altimeter with automatic pressure trend recording.



Waterproof



Waypoints



Battery



BlueChart Compatible



WAAS EGNOS Enabled



NMEA 0183



1-Year Warranty

Package Includes:

- GPSmap® 76CSx unit
- One basemap below:
 - Americas: Americas Recreational
 - Europe: Atlantic Recreational
 - Australia: Pacific Recreational
- 128 MB microSD
- USB interface cable
- MapSource Trip & Waypoint Manager CD
- Lanyard
- Owner's Manual
- Quick-Start Guide



BlueChart detail



Main menu

KEY features

GPS 72 | 76

Navigation on land or sea

Waterproof and they float!

Marine database. Preloaded with worldwide cities and nav aids

50 reversible routes

Automatic track log

Trip computer

Large numbers viewing option

72 - 120 x 160 pixels display

76 - 180 x 240 pixels display

76 - external antenna connection, can easily be used below deck

GPSmap® 76 | 76S

Waterproof and they float!

Accepts MapSource MetroGuide BlueChart and TOPO data

Detailed basemap with cities, motorways, roads, exits, rivers and lakes

180 x 240 pixels display

Tidal data from BlueChart CD-ROM for selected European countries

External antenna option

76S - Electronic Compass and Barometric Altimeter; 24 MB memory

GPSmap® 76Cx | 76CSx

128 MB of expandable memory on MicroSD card for BlueChart marine cartography or City Navigator NT street level mapping and TOPO data

Brilliant sunlight-readable TFT colour displays

Waterproof and they float!

High-sensitivity GPS receiver

Turn-by-turn guidance (with optional automotive navigation kit)

30 hours use on two AA batteries

76Cx - Electronic Compass and Barometric Altimeter sensor

Go to page 45 for full product specifications and comparisons



NEW

▶ Oregon 300

Packed with features, the new Touchscreen Oregon 300 from Garmin is our premium handheld GPS. It includes a built-in world wide basemap with shaded relief, high-sensitivity receiver, barometric altimeter, electronic compass, picture viewer and much more. It has a waterproof SD card slot and large, high-resolution colour display for showing road and topographic maps, coastal charts or inland lake data.

In addition, the touchscreen, the most simple-to-use interface, and ability to share waypoints, tracks and routes wirelessly with other users make the Oregon the perfect companion, whatever your outdoor pursuit.



▶ Other Garmin Handhelds

Garmin has a wide range of outdoor GPS units – from wrist-mounted devices to compact and rugged handheld units – to help you find your way on the water, on the road and on the trail.

All the vital information is at your fingertips including your exact position at any given time, distance travelled, speed and elevation. You can mark waypoints, save routes and record thousands of track log points to make navigation simple.

Models with mapping capability are compatible with BlueChart marine mapping as well as topographical and street-level mapping for turn-by-turn directions.



GPS 60

eTrex H

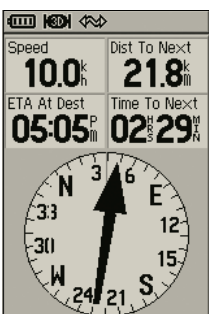


Foretrex 101


Foretrex 102



Mark Waypoint (eTrex H)



Compass (GPS 60)



▶ Fishfinders

Easy to see, easy to use

Whether you're scouting for fish or simply keeping an eye on the rugged terrain beneath your boat, a Garmin fishfinder can bring extra depth and detail to the picture. Powerful transmitters, high-resolution displays, efficient single or dual-frequency transducers, and an array of easy-to-use features put these Garmin units at the top of any serious angler's must-have list. All systems feature the Garmin patented See-Thru technology, for clearer separation of fish returns from thermoclines and structure. In addition, UltraScroll capability provides faster refresh rates on Garmin sonar, while dual beam transducer output significantly enhances shallow water performance. Other highlights include a new one-megabit Controller Area Network solution, called CANet, that lets you access and view fishfinder returns on compatible Garmin chartplotter displays.

▶ How Fishfinders work

All fishfinders operate using sonar – a technology developed during World War II to help locate and track deep-running submarines. Eventually, some enterprising fisherman realised that sonar waves could be used to track fish locations as well, and the modern fishfinder was born.

In simplified terms, sonar is an echo-sounding technology that uses a transducer to send ultrasonic sound waves, or pings, through water in a cone-shaped pattern. When these sound waves strike an object such as the bottom, an object, or a fish, sound is reflected back to the transducer. Since the speed of sound in water is constant, the time lapse between the transmitted signal and the received echo can be measured and the distance to the underwater object determined. A built-in microprocessor organises this information and translates it into symbols on the fishfinder display.

Any subtle differences in objects, whether that is a rocky seabed, a muddy floor or one that is covered in weeds or foliage are shown up as different sonar reflections. These can be read by the fishfinder and used to graphically display bottom profiles on screen. An electronic Whiteline feature, found on the more sophisticated Garmin units, can be used to further enhance interpretation of bottom type. A thin whiteline on the display indicates a softer bottom, while a thick whiteline indicates a harder bottom.

Normally, Garmin greyscale displays use a black line, while our colour displays use a red line to define where water ends and bottom begins. The whiteline feature helps accentuate where strong signals are located to help distinguish bottom type and identify logs, stumps, rocks or other structure with fish-harboring potential.

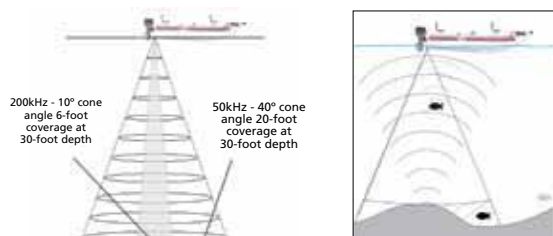
Fish targets and cone angles

The type and size of fish target echos appearing on one's sonar display are influenced by a number of factors: the sensitivity setting on the fishfinder, the cone angle of the transducer, the speed of the boat, and the size, depth, speed and trajectory of the fish.

Cone angle, or beam width, is the angular measurement of the sonar beam in degrees. For example, a 40° cone angle is broader and covers more area than a 10° cone, at equal water depths. Cone angles used may vary by fishfinder model. Some use only a single beam width, while more sophisticated models offer dual or multi-beam technology (through multiple transducers) to cover a wider area without sacrificing detail.

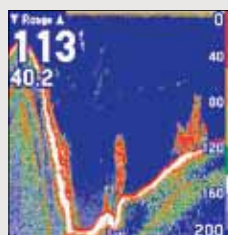
Some of the newest Garmin fishfinders offer a dual frequency capability which, in effect, allows a single transducer to deliver the benefits of two beam widths. These units alternately transmit 50 kHz and 200 kHz signals through the same transducer. This allows the unit to use the narrow cone angle (200 kHz) to display detailed bottom information (keeping dead zones to a minimum), while the wider 50 kHz beam provides broader coverage, so the unit can spot more fish.

Dual Frequency



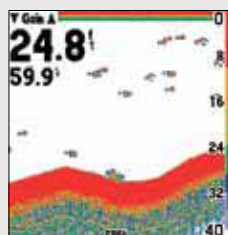
New sounder technology

(available in the 140, 160C, 400C and 340C or using a GSD 21/22 with a compatible Garmin chartplotter)



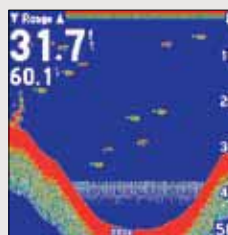
UltraScroll™

Garmin UltraScroll technology provides a much faster repetition rate of transducer firing – enabling boaters to see faster screen updates to better pinpoint targets on their sonar displays.



Dual Beam

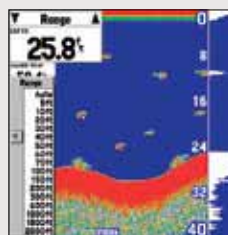
Dual Beam technology enables a single transducer to work at two different frequencies – thus providing improved performance in shallow water and making it easier to target fish off the sides of the boat.



See-Thru® technology

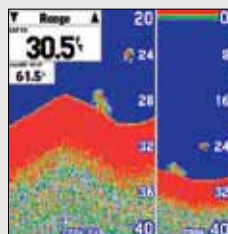
See-Thru technology allows the fishfinder to hear both weak and strong signals simultaneously. This helps you identify fish returns when they're suspended in thermoclines or even hiding near structure.

Features common to all Garmin Fishfinders



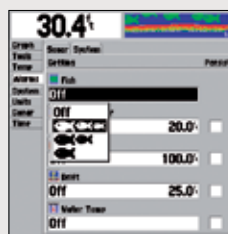
Range adjustment

Here, the user is manually adjusting the range to the 50-foot scale. The far right side shows the flasher feature, which displays real-time sonar for easy target detection.



Zoom

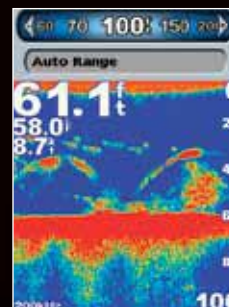
When the fish are holding tight to the bottom, use the zoom feature to find them. The 2x or 4x zoom on a full or split screen (shown) is the perfect setting to use.



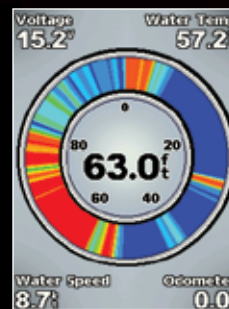
Customise

This screen shows how a user can adjust the unit's alarms to signal conditions such as fish by size, shallow water, deep water.

Fishfinder 400C



Adjust Range



Flasher

Fishfinder 400C

▶ Fishfinder 400C

The Garmin Fishfinder 400C gives you a great underwater view, whatever the weather. It has a unique 4-inch QVGA display that's easy to see in bright sunlight, dual beam and a choice of either a 400 watt RMS in Dual Beam or 500 watt RMS dual frequency transducer. With all that you'll be sure to improve your catch.

The 400C delivers maximum scanning flexibility in depths ranging from one to 900 feet. UltraScroll design provides sonar updates, AutoGain, See-Thru targeting, fish size alerts and water temperature logs give you all the tools you need.

The fully automatic operation makes it easy to use, and the streamlined user interface gives it an elegant form factor. The Fishfinder 400 is also CANet capable.

Package Includes:

- Fishfinder 400C
- Swivel mounting bracket
- Power/data cable
- Dual beam transducer
- Protective cover
- Owner's manual

KEY features

Fishfinder 400C

CANet compatible

Audible alarms

Dual frequency and Dual Beam sonar capable

Split-Screen zoom

UltraScroll (displays fish targets at higher boat speeds)

See-Thru technology (exposes fish hidden in cover)

AutoGain Technology (reduces clutter, maximises targets)

Adjustable depth line (measures depth of underwater objects)

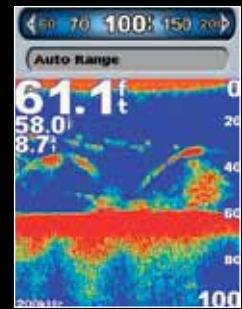
A-Scope (real-time display of fish passing through transducer beam)

Water speed capable (displays speed on water)

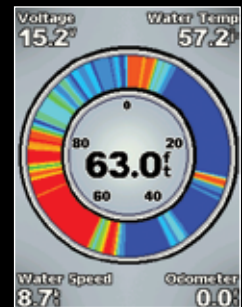
Go to page 46 for full product specifications and comparisons

- 2-Year Warranty
- Waterproof
- CANet
- Sonar
- NMEA 0183

Fishfinder 300C



Adjust Range



Flasher

► Fishfinder 300C

Featuring a crisp, sunlight viewable 3.5-inch colour display, the Fishfinder 300C delivers a lot of performance in a compact and affordable unit. With a dual beam transducer included, it can scan a wider area for fish in shallow water, while having the power to reach down deep to 900 feet.

The 300C has a host of advanced features such as Adjustable Depth Line, Water Temperature graph, Zoom and a Round Flasher display mode to allow you to capture more detail. See-Thru, AutoGain and UltraScroll technology will give you the edge to catch more fish, more of the time. With a new, simple-to-use menu, so you can focus more on your fishing and less on working your Fishfinder.

2

2-Year Warranty

IPX7

Waterproof

Sonar

NMEA

NMEA 0183

Package Includes:

- Fishfinder 300C
- Transom mount transducer (dual beam)
- 6ft. power/data cable
- Bail mounting bracket
- Flush mount hardware
- Quick start manual

KEY features

Fishfinder 300C

Super bright 3.5-inch QVGA colour display

Includes a 150W dual beam transducer for optimum fresh and salt water performance

Depth range to 900 ft (247m)

See-Thru, AutoGain and UltraScroll technology for enhanced performance

Full function, easy-to-use menu

Speed and Trip information with optional transducer

Audible Alarms

Adjustable Depth Line

Graphic record of water temperatures

Go to page 46 for full product specifications and comparisons



Waterproof



Sonar



NMEA 0183



2-Year Warranty

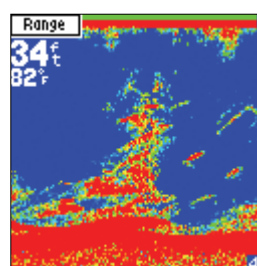
Fishfinder 160C

The Fishfinder 160C is an affordable colour sonar. Fish returns and bottom information are clearly shown on the unit's bright, sunlight-readable colour display, making it easier for you to scope out your fishing grounds. The Fishfinder 160C offers a dual beam transducer for improved shallow water performance. Like all Garmin fishfinders, the 160C is rugged, waterproof, and able to stand up to the elements.

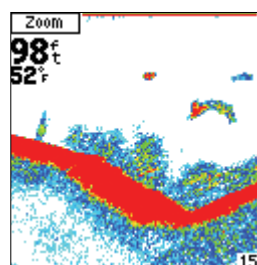
The Fishfinder 160C also offers UltraScroll, which allows boaters to get a much faster refresh rate on their sonar display. AutoGain, as well as user adjustable gain is also standard on all new Garmin fishfinders.

Package Includes:

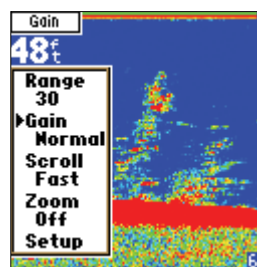
- Fishfinder 160C
- Transom mount transducer (dual beam)
- Power cable
- Mounting bracket with tilt/swivel
- Owner's manual
(Portable configuration also includes portable carry case and transducer suction cup mount.)



Fish near structure



White background



Menu screen

KEY features

Fishfinder 160C

Bright, sunlight-readable 4.5-inch colour display

Affordable colour sonar option for recreational fishermen

Includes 150W Dual Beam transducer for optimum shallow water performance

UltraScroll high-rep-rate sonar

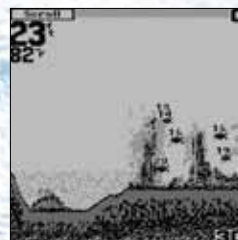
Depth: 900 ft.

SeeThru technology separates fish from thermoclines and structure

AutoGain for detailed images of structure and bottom densities

User selectable 14° or 45° view

Go to page 46 for full product specifications and comparisons



Fish in cover



Big numbers feature



Find fish easily

▶ Fishfinder 90 | 140

The Fishfinder 90 wraps simple operations and Garmin exclusive fishfinder technology into an entry-level sonar. It's perfect for any vessel where space is at a premium. Dual Beam transducer operation gives you better shallow-water performance. The wide viewing angle (45°) lets you see fish even off the sides of the boat. With a basic black-on-white display, the Fishfinder 90 has one of the sharpest screens for the money.

The Fishfinder 90 also offers UltraScroll which allows boaters to get a much faster refresh rate on their sonar display. AutoGain, as well as user adjustable gain, is also standard on all new Garmin fishfinders.

When seeing your targets clearly is the goal, the Fishfinder 140 is the tool. With 240 vertical pixels on a four-level grayscale display, you get better separation and contrast. Like all of the new Garmin fishfinders, the 140 features UltraScroll for fast screen updates, which is ideal for speed applications. The 140 has minimal buttons and intuitive operations. You don't even have to leave the sonar screen to change settings, thanks to a convenient adjustment bar.



2-Year Warranty



Waterproof



Sonar

Package Includes:

- Fishfinder 90 or 140
- Transom mount dual beam transducer with integrated power cable
- Mounting bracket with tilt/swivel
- Owner's manual (Portable configuration also includes portable carry case and transducer suction cup mount.)

KEY features

Fishfinder 90 and 140

Four level greyscale FSTN screen (Fishfinder 140)

Features UltraScroll for fast screen updates

Dual Beam transducer operation for better fish presentation in shallow water

User selectable 14° or 45° view

Wide viewing angle (45°) lets you see fish off the sides of the boat

AutoGain for detailed images of structure and bottom densities

Go to page 46 for full product specifications and comparisons

Transducers

Garmin transducers are available in a variety of installation types, so you're sure to find the one that fits your boat and your application. If you want the deepest sonar readings possible without sacrificing bottom detail, check out the Garmin line of dual frequency transducers, which give you the option of low and high-frequency operation. When paired with Garmin sounder products, you'll see better resolution and detail on the high-frequency setting. Operating on the lower frequency, you'll get deeper readings, which is ideal for offshore fishing.

Transom transducers



Typical Usage:

Outboard, inboard/outboard or jet-powered boats; fibreglass, aluminium, wood or inflatable hulls

Material:

Plastic

In-hull adjustable deadrise transducer



Typical Usage:

Inboard boats, high-speed planing hull powerboats or sailboats

Material:

Urethane

Thru-hull transducers



Typical Usage:

Inboard boats, high-speed planing hull powerboats or sailboats

Material:

Plastic



Typical Usage:

Inboard boats, high-speed planing hull powerboats or sailboats; wood hulls; aluminium hulls must isolate bronze housing

Material:

Bronze



Typical Usage:

Inboard boats, high-speed planing hull powerboats or sailboats; wood hulls; aluminium hulls must isolate bronze housing

Material:

Bronze; includes fairing block

NEW



Garmin Intelliducer

The new range of through-hull Depth Intelliducers is available in two variants to compensate for different angles of hull deadrise (0 to 12 degrees and 13 to 24 degrees).

This provides more accurate data and minimises the risk of losing depth readings as the boat rolls or heels. Also available as Transom mount. NMEA 2000 or 0183 outputs.

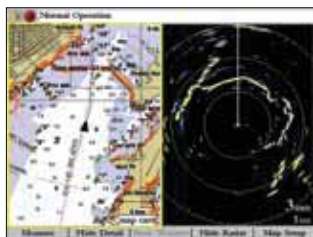
▶ Garmin Marine Network™



▶ GMS 10



Map, video and sonar



Map and radar



Network Capable



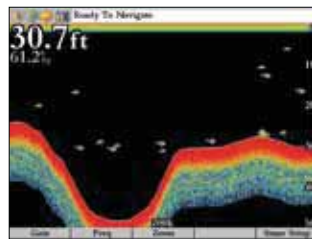
Waterproof



2-Year Warranty

The GMS 10 Network Port Expander is the nerve centre of the Garmin Marine Network. This 100-Mbit switch is designed to support the connection of multiple sensors and compatible chartplotters / multifunction displays to the Garmin Marine Network. The GMS 10 allows users to achieve data transfer speeds up to 10 times faster than some competitive systems.

Each networked MFD can be configured independently, and the connections are completely waterproof for operation in corrosive marine environments. The switch has LED indicators for individual line status. Plug-and-play design means that all peripherals are automatically detected and readily accessible once they're connected to the network.



Sonar on a GPSmap 3000 series



Sonar on a GPSmap 276C



Network Capable



CANet



Waterproof



Sonar



2-Year Warranty

▶ GSD 21 | 22

The GSD 21 and GSD 22 are powerful black box sonars designed to operate with stand-alone Garmin chartplotters or integrate with the Garmin Marine Network and CANet (for high-speed connections to provide sounder data to compatible chartplotters).

The GSD 21 is an analogue sounder that will work with a serial connection to other Garmin plotters without the CANet connection. It performs in as little as one foot of water down to depths of 1,500 feet. It connects to a dual frequency transducer (50/200 kHz) or a single frequency, dual beam width transducer (narrow/wide) for operation in shallow as well as deeper water.

The digital GSD 22 can transmit at up to 2 kW, depending on your transducer. It is also possible to adjust gain and transmit power automatically to optimise the returns for shallow water. It can connect to a dual-frequency transducer and can reach a depth of 5,000 feet.

Package Includes:

- GMS 10
- Mounting hardware
- RJ45 cable (6 feet)
- Power/data cable (7 feet)

Package Includes:

- GSD 22 / GSD 21
- Marine network cable (GSD 22 only)
- Power/data cable
- CANet cable
- Cable grommet (GSD 22 only)
- Installation instructions

▶ Garmin BlueChart Cartography

Unleash the full potential of your
Garmin Chartplotter

With our own unique and innovative BlueChart series of marine cartography, Garmin is able to offer truly outstanding graphics, satellite images, our own bespoke library of photographs and true 3D-view presentation. Crisp, colourful and detailed displays present mariners with an intuitive view of every contour and feature, with a minimum of panning or zooming required to bring these details into focus.

BlueChart cartography is shaded just like paper charts, making it easy to identify intertidal zones, depth contours, obstructions, anchorages, restricted areas and more. Additional, more detailed descriptions of chart features are revealed with a simple key press. Full tidal curve details for both primary and secondary ports are included on all BlueChart cards.

For truly exceptional graphics, the Garmin BlueChart g2 Vision series offers our unique AutoGuidance feature, amazing 3D views, both above and below the surface, worldwide high-resolution satellite images, intuitive current arrows showing both direction and speed as well as detailed, fully contoured charts for the fisherman.

Garmin BlueChart® Cartography

BlueChart®

BlueChart works in seamless integration with the plotters featured. These detailed electronic nautical charts look just like paper charts, when displayed on your Garmin chartplotter. Features include shading between depth contours, spot soundings, nav aids, port plans, wrecks, obstructions, intertidal zones, restricted areas and more. BlueChart cartography is object-oriented, which means you can pan to an object on the map and instantly view information about that point.

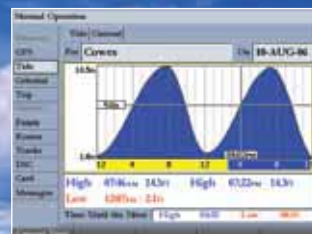
BlueChart cartography is offered in three forms – pre-programmed data cards, micro SD cards for X-series handhelds and MapSource CD-ROMs. MapSource CDs contain detailed maps that can be downloaded to blank data cards or directly to units with PC interfaces.



Navigation Screen



Navaid



Tidal Curve

BlueChart® g2

BlueChart g2 features smoother layering and better integration of map graphics, for easy panning, scrolling and zooming. Richer colours and shading enable easier interpretation and improved visibility. BlueChart g2 also adds more detail on land features, coastal roadways, marine services and municipal areas and offers improved IALA navaid symbology. The user has a choice of new Mariner's View map perspective, or the familiar 2D direct-overhead view – to make chart reading and orientation easier. Like all BlueChart cartography, g2 is styled to match the appearance of paper charts when displayed on your Garmin chartplotter.

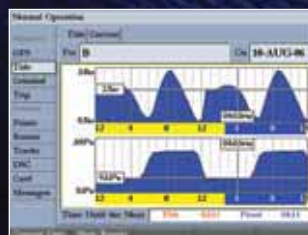
Features include shading between depth contours, spot soundings, nav aids, port plans, wrecks, obstructions, intertidal zones, restricted areas and more.



Aerial Photos



Navigation Screen



Tidal Current



Mariner's Eye 3D

BlueChart® g2 Vision™

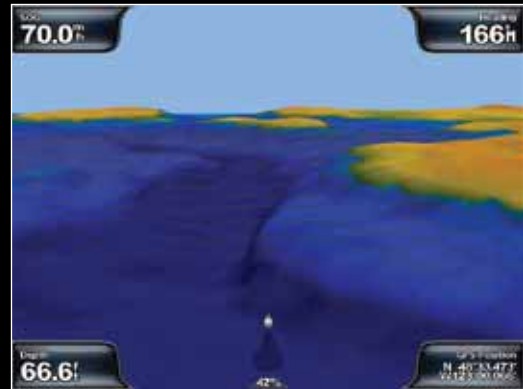
BlueChart g2 Vision advanced charting from Garmin gives mariners even better vision with 3D perspectives above and below the waterline.

The unique Garmin Auto Guidance technology swiftly plots a suggested best route based on chart information at the press of a button, avoiding the need for manual course entry.

Available on pre-programmed SD cards, BlueChart g2 Vision simply slots into the latest Garmin chartplotters to greatly extend the graphical capabilities of your equipment.

BlueChart g2 Vision cards provide:

- Auto Guidance technology to find the best course for navigation
- High-resolution satellite imagery
- Aerial reference photography to provide 'real-world' images of ports, harbours and marinas
- Mariner's Eye View 3D perspective of chart information for a quick, reliable and easy position fix
- Fish Eye View 3D perspective below the water line to display floor contours based on bathymetric charting data
- Tidal graphs, current arrows, marine services, coastal roads and points of interest detail
- Detailed bathymetric fishing charts to emphasise bottom contours and depth soundings while removing selected navigation detail from the map for a sharper definition of the sea floor



Mariner's Eye 3D



AutoGuidance with tidal arrows



Satellite Imagery



Fishing Charts

BlueChart



	Traditional	g2	g2 Vision
Port Plan Charts	•	•	•
Spot Soundings	•	•	•
Marine Services	•	•	•
Wrecks and Obstructions	•	•	•
Intertidal zones	•	•	•
Obstructions	•	•	•
Restricted Areas	•	•	•
Nautical Nav aids	•	•	•
Restricted Areas	•	•	•
Anchorage	•	•	•
Harbour Limits	•	•	•
Depths Contours	•	•	•
Tidal Stations	•	•	•
Detailed Roads		•	•
Aerial Photos		•	•
Business POIs		•	•
Mariner View		•	•
Large Cards		•	•
Current Information		•	•
Mariner's Eye 3D		•	•
Satellite Imagery		•	•
AutoGuidance		•	•
Fish Eye 3D		•	•
Tidal Gauge		•	•
Current Tidal Stream Arrow		•	•
Fishing Contours		•	•
Flashing Nav aids (only on Mariner's Eye 3D)		•	•
CHARTPLOTTER COMPATIBILITY			
GPSMAP 182, 188, 192, 198, 172, 178	•	•	•
292, 298, 2000 series, 3000 series,	•	•	•
60i/C/CSX/CSX, 76CX/CSX	•	•	•
GPSMAP 276, 278, 292, 298	•	•	•
2106, 3000 series	•	•	•
GPSMAP 4XX, 5XX, 4XXX, 5XXX series		•	•
MEDIA FORMATS			
CD-ROMS	•	•	•
Garmin Data Cards	•	•	•
Pre-programmed microSD/SD	•	•	•

Chartplotters



	GPSmap 276C and 278	GPSmap 420	GPSmap 520	GPSmap 525	GPSmap 3005C, 3006C and 3010C
GPS receiver type	Detachable 12 channel	Internal 12 channel (compatible with GA29)	Internal 12 channel (compatible with GA29)	Internal 12 channel (compatible with GA29)	GPS 17 external 12 channel
Waterproof Standard	IPX 7	IPX 7	IPX 7	IPX 7	IPX 7
Pre-programmed charts	European maps (278 only)	NO	NO	NO	NO
Basemap	Traditional	Satellite Imagery	Satellite Imagery	Satellite Imagery	Traditional
BlueChart Compatible	YES	NO	NO	NO	YES
G2 Compatible	YES	NO	NO	NO	YES
G2 Vision Compatible	NO	YES	YES	YES	NO
Unit Dimensions	5.7" W x 3.2" H x 1.9" D	5.7" W x 5.0" H x 2.9" D	6.4" W x 5.9" H x 2.9" D	6.4" W x 5.9" H x 2.9" D	See technical drawings below
Display Size (diagonal)	3.8" (96.5mm)	4.0" (102mm)	5.0" (127mm)	5.0" (127mm)	3005 - 5.0" 3006 - 6.4" 3010 - 10.4"
Display Type	256+ colour Sunlight Readable	256+ colour QVGA, Sunlight Readable	256+ colour QVGA, Sunlight Readable	256+ colour VGA, Sunlight Readable	256+ colour VGA, Sunlight Readable
Display Resolution	320 x 480	240 x 320	240 x 320	640 x 480	640 x 480
Battery Life	15 HR Rechargeable	n/a	n/a	n/a	n/a
TracBack Mode	YES	YES	YES	YES	YES
No. of Tracklog points	10,000	10,000	10,000	10,000	10,000
CANet Compatible	NO	YES	YES	YES	NO
Garmin Marine Network Compatible	NO	NO	NO	NO	YES
WAAS/EGNOS Capability	YES	YES	YES	YES	YES
Video Input	NO	NO	NO	NO	3006, 3010 only
MGRS Position format	YES	YES	YES	YES	YES
Compatible with Radar	NO	NO	NO	NO	YES
Celestial information page	YES	YES	YES	YES	YES
Alphanumeric Keypad	NO	NO	NO	NO	YES
Tide Station Information	YES	YES	YES	YES	YES
Voltage Range	10-35	10-35	10-35	10-35	10-35
NMEA 0183 Compatible	YES	YES	YES	YES	YES
NMEA 2000 Compatible	NO	NO	NO	NO	NO
Bathymetric Fishing Charts	NO	with optional g2 Vision card	with optional g2 Vision card	with optional g2 Vision card	NO
Fish Eye 3D	NO	with optional g2 Vision card	with optional g2 Vision card	with optional g2 Vision card	NO
Mariner's Eye 3D	NO	with optional g2 Vision card	with optional g2 Vision card	with optional g2 Vision card	NO
AutoGuidance	NO	with optional g2 Vision card	with optional g2 Vision card	with optional g2 Vision card	NO

Product information on p25

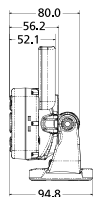
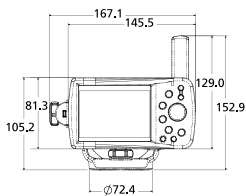
Product information on p22

Product information on p23

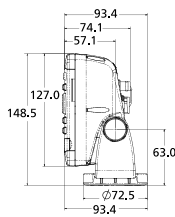
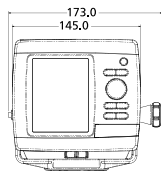
Product information on p24

Product information on p10

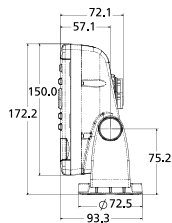
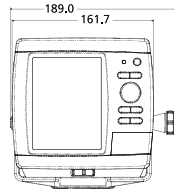
GPSmap 276C and 278



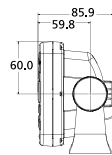
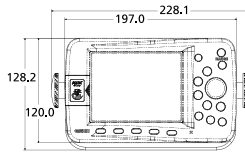
GPSmap 420



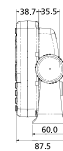
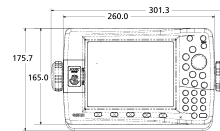
GPSmap 520 and 525



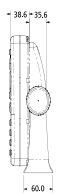
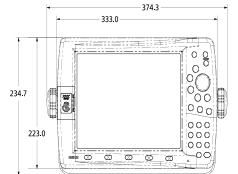
GPSmap 3005C



GPSmap 3006C



GPSmap 3010C



Chartplotters



	GPSmap 4008	GPSmap 4010	GPSmap 4012	GPSmap 5008	GPSmap 5012	GPSmap 5015
GPS receiver type	GPS 17 external 12 channel	GPS 17 external 12 channel	GPS 17 external 12 channel	GPS 17 external 12 channel	GPS 17 external 12 channel	GPS 17 external 12 channel
Waterproof Standard	IPX 7					
Pre-programmed charts and Basemap	Satellite Imagery Basemap					
BlueChart Compatible	NO					
G2 Compatible	NO					
G2 Vision Compatible	YES					
Unit Dimensions	11.2" W x 7.0" H x 4.17" D	13.4" W x 8.9" H x 4.2" D	14.8" W x 9.5" H x 4.75" D	10.1" W x 6.8" H x 4.2" D	13" W x 9.5" H x 4.7" D	15.5" W x 11.7" H x 5.7" D
Display Size	8.4" diag (213mm)	10.4" diag (264mm)	12.1" diag (307mm)	8.4" diag (213mm)	12.1" diag (307mm)	15.1" diag (307mm)
Display Type	4096 colour VGA	4096 colour SVGA	4096 colour XGA	Touchscreen colour VGA	Touchscreen colour XGA	Touchscreen colour XGA
Sunlight Readable	Sunlight Readable					
Display Resolution	640 x 480	800 x 600	1024 x 768	640 x 480	1024 x 768	1024 x 768
Battery Life	n/a	n/a	n/a	n/a	n/a	n/a
TracBack Mode	YES					
No. of Tracklog points	10,000					
CANet Compatible	NO					
Garmin Marine Network Compatible	YES					
WAAS/EGNOS Capability	YES					
Video Input	YES					
MGRS Position format	YES					
Compatible with Radar	YES					
Celestial information page	YES					
Alphanumeric Keypad	YES			Touch Screen		Touch Screen
Tide Station Information	YES					
Voltage Range	10-35		10-35	10-35		10-35
NMEA 0183 Compatible	YES					
NMEA 2000 Compatible	YES					
Bathymetric Fishing Charts	with optional g2 Vision card					
Fish Eye 3D	with optional g2 Vision card					
Mariner's Eye 3D	with optional g2 Vision card					
AutoGuidance	with optional g2 Vision card					
	Product information on p8	Product information on p8	Product information on p8	Product information on p6	Product information on p6	Product information on p6

GPSmap 4008

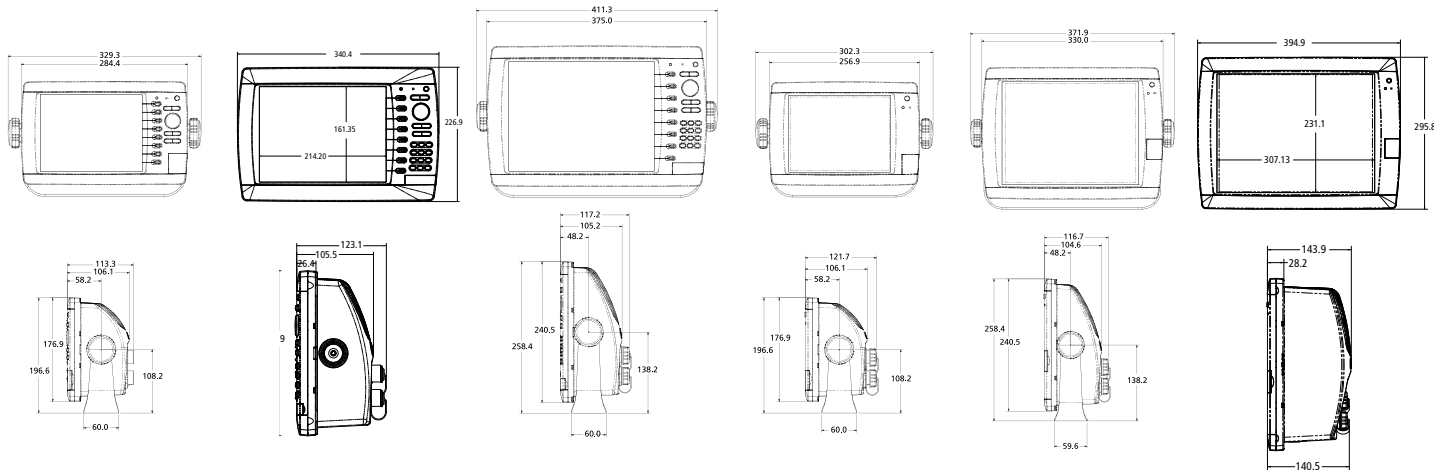
GPSmap 4010

GPSmap 4012

GPSmap 5008

GPSmap 5012

GPSmap 5015



Handhelds



	eTrex H	eTrex Legend HCx	eTrex Vista HCx	Foretrex 101	Foretrex 201
Receiver	12 channel	12 channel	12 channel	12 channel	12 channel
Number of Waypoints	500	500	500	500	500
Built in Memory	N/A	microSD card expandable memory	microSD card expandable memory	N/A	N/A
No. of Routes / No. of waypoints per route	20/124	50/250	50/250	20/125	20/125
Database, Basemap, or Built-in Maps	N/A	Recreational Routable Basemap, Atlantic	Recreational Routable Basemap, Atlantic	N/A	N/A
Additional map options	No	MapSource CD-ROM uploadable information, pre-programmed microSD data cards	MapSource CD-ROM uploadable information, pre-programmed microSD data cards	N/A	N/A
Battery Life	22 HR (2AA)	32 HR (2 AA)	32 HR (2 AA)	15 HR (AAA)	15 HR (Rechargeable)
Display Size	2.1 x 1.1	1.7 x 1.3	1.7 x 1.3	.9 x 1.4	.9 x 1.4
Display Type	4 level Gray LCD	256 level Colour TFT	256 level Colour TFT	Black & White LCD	Black & White LCD
Area Calculation	No	Yes	Yes	No	No
Display Resolution	128 x 64	220 x 176	220 x 176	64 x 100	64 x 100
Standard GPS Antenna	Built in	Patch Antenna	Patch Antenna	Built in	Built in
TracBack Mode	Yes	Yes	Yes	Yes	Yes
No. of Tracklog Points	10,000	10,000	10,000	10,000	10,000
Unit Weight	5.3 oz. w/ batteries	5.5 oz. w/ batteries	5.5 oz. w/ batteries	2.75 oz.	2.75 oz.
Audible Alarms	No	Anchor, Arrival, Clock, Off Course	Anchor, Arrival, Clock, Off Course	No	No
Waterproof Standard	IPX7	IPX7	IPX7	IPX7	IPX7
Unit Dimensions	4.4"W x 2.0"H x 1.2"D	4.2"W x 2.2"H x 1.2"D	2.2"W x 4.2"H x 1.2"D	1.7"W x 3.3"H x .91"D	1.7"W x 3.3"H x .6"D
Thumb Stick (5-position cursor switch)	No	Yes	Yes	N/A	N/A
Separate Serial & USB interfaces	N/A	No / USB Only	No / USB only	N/A	N/A
Map Storage	N/A	Removable microSD data card	Removable microSD data card	N/A	N/A
Backlit Display	Single level	Multi-level adjustable	Multi-level adjustable	Single level	Single level
Ext. Ant. Hookup	No	No	No	N/A	N/A
Internal Differential	N/A	N/A	N/A	N/A	N/A
WAAS/EGNOS capability	Yes	Yes	Yes	Yes	Yes
Loran TD position format	N/A	Yes	Yes	Yes	Yes
MGRS position format	Yes	Yes	Yes	Yes	Yes
Glide Ratio, Glide Ratio to Destination, and Vertical Speed to Destination	N/A	N/A	N/A	N/A	N/A
Built-In Electronic Compass	N/A	N/A	Yes	N/A	N/A
Built-In Barometric Altimeter	N/A	N/A	Yes	N/A	N/A
Turn by turn routing	N/A	Yes	Yes	N/A	N/A
Hunting/Fishing calculator	Yes	Yes	Yes	Yes	Yes
Celestial Information Page	No	Yes	Yes	Yes	Yes
Proximity Waypoints	No	Yes	Yes	N/A	N/A
Tide Prediction	N/A	Yes	Yes	N/A	N/A
Voltage Range	2.5	4.2-5.5	4.2-5.5	3.2	4.5-5.5
Waypoint Icons	Yes	Yes	Yes	Yes	Yes
NMEA compatible	Yes	Yes	Yes	Yes	Yes



Handhelds

	GPS 60	GPSMAP 60	GPSMAP 60Cx	GPSMAP 60CSx	Oregon 300
Receiver	12 channel	12 channel	High-sensitivity GPS receiver	High-sensitivity GPS receiver	High-sensitivity GPS receiver
Number of Waypoints	500	500	1,000	1,000	1,000
Built in Memory	1 MB	24 MB	64 MB removable microSD data card (included)	64 MB removable microSD data card (included)	850 MB
No. of Routes / No. of waypoints per route	50/250	50/250	50/250	50/250	50/20
Database, Basemap, or Built-in Maps	Worldwide City Point Database	Atlantic Recreational	Recreational Routable Basemap, Atlantic	Recreational Routable Basemap, Atlantic	World Basemap, shaded relief
Additional map options	MapSource Points of Interest CD	MapSource CD-ROM uploadable information	MapSource CD-ROM uploadable information, pre-programmed microSD data cards	MapSource CD-ROM uploadable information, pre-programmed microSD data cards	microSD card expandable memory
Battery Life	28 HR (2 AA)	28 HR (2 AA)	18 HR (2 AA)	18 HR (2 AA)	16 HR (2 AA)
Display Size (inches)	2.2 x 1.5	2.2 x 1.5	2.2 x 1.5	2.2 x 1.5	2.5 x 1.5
Display Type	4 level Gray LCD	4 level Gray LCD	256 level Colour TFT	256 level Colour TFT	Transflective Colour TFT
Area Calculation	Yes	Yes	Yes	Yes	Yes
Display Resolution	240 x 160	240 x 160	240 x 160	240 x 160	240 x 400
Standard GPS Antenna	Built-in quad helix	Built-in quad helix	Built-in quad helix	Built-in quad helix	Built-in quad helix
TracBack Mode	Yes	Yes	Yes	Yes	Yes
No. of Tracklog Points	10,000	10,000	10,000	10,000	10,000
Unit Weight	7.5 oz.	7.5 oz.	5.4 oz. w/o batteries	5.4 oz. w/o batteries	6.8 oz.
Audible Alarms	Anchor, Arrival, Clock, Off Course	Anchor, Arrival, Clock, Off Course	Anchor, Arrival, Clock, Off Course	Anchor, Arrival, Clock, Off Course	Anchor, Arrival, Clock, Off Course
Waterproof Standard	IPX7	IPX7	IPX7	IPX7	IPX7
Unit Dimensions	6.1 x 2.4 x 1.3	6.1 x 2.4 x 1.3	6.1 x 2.4 x 1.3	6.1 x 2.4 x 1.3	4.5 x 2.3 x 1.4
Touchscreen	N/A	N/A	N/A	N/A	YES
Separate Serial & USB interfaces	N/A	Yes	Yes	Yes	YES
Map Storage	Internal Memory (POI only)	Internal Memory	Removable microSD data card	Removable microSD data card	Removable microSD data card
Backlit Display	Multi-Level	Multi-Level	Multi-level adjustable	Multi-level adjustable	Graded
Ext. Ant. Hookup	Yes	Yes	Yes	Yes	Yes
WAAS/EGNOS capability	Yes	Yes	Yes	Yes	Yes
Loran TD position format	Yes	Yes	Yes	Yes	Yes
MGRS position format	Yes	Yes	Yes	Yes	Yes
Glide Ratio, Glide Ratio to Destination, and Vertical Speed to Destination	N/A	N/A	N/A	Yes	Yes
Built-In Electronic Compass	N/A	N/A	N/A	Yes	Yes
Built-In Barometric Altimeter	N/A	N/A	N/A	Yes	Yes
Turn by turn routing	N/A	Yes	Yes	Yes	Yes
Hunting/Fishing calculator	Yes	Yes	Yes	Yes	Yes
Celestial Information Page	Yes	Yes	Yes	Yes	Yes
Proximity Waypoints	Yes	Yes	Yes	Yes	Yes
Tide Prediction	Yes	Yes	Yes	Yes	Yes
Voltage Range	8-36	8-36	8-36	8-36	8-36
Waypoint Icons	Yes	Yes	Yes	Yes	Yes
NMEA compatible	Yes	Yes	Yes	Yes	Yes

Handhelds



	GPS 72	GPS 76	GPSMAP 76	GPSMAP 76S	GPSMAP 76Cx	GPSMAP 76CSx
Receiver	12 channel	12 channel	12 channel	12 channel	High-sensitivity GPS receiver	High-sensitivity GPS receiver
Number of Waypoints	500	500	1,000	1,000	1,000	1,000
Built in Memory	1 MB	1 MB	8 MB	24 MB	128 MB microSD (included)	128 MB microSD (included)
No. of Routes / No. of waypoints per route	50/50	50/50	50/125	50/125	50/250	50/250
Database, Basemap, or Built-in Maps	Marine Point Database	Marine Point Database	Atlantic Highway	Atlantic Highway	Routeable Basemap, Atlantic	Routeable Basemap, Atlantic
Additional map options	MapSource Points of Interest	MapSource Points of Interest	MapSource CD-ROM uploadable information	MapSource CD-ROM uploadable information	MapSource CD-ROM uploadable information	MapSource CD-ROM uploadable information
Battery Life	16 HR (2 AA)	16 HR (2 AA)	16 HR (2 AA)	16 HR (2 AA)	18 HR (2 AA)	18 HR (2 AA)
Display Size	2.2 x 1.6	2.2 x 1.6	2.2 x 1.6	2.2 x 1.6	2.2 x 1.5	2.2 x 1.5
Display Type	4 level Gray LCD	4 level Gray LCD	4 level Gray LCD	4 level Gray LCD	256 Colour TFT	256 Colour TFT
Area Calculation	Yes	Yes	Yes	Yes	Yes	Yes
Display Resolution	160 x 120	240 x 180	240 x 180	240 x 180	240 x 160	240 x 160
Standard GPS Antenna	Built in quad helix	Built in quad helix	Built in quad helix	Built in quad helix	Built in quad helix	Built in quad helix
TracBack Mode	Yes	Yes	Yes	Yes	Yes	Yes
No. of Tracklog Points	2,048	2,048	10,000	10,000	10,000	10,000
Unit Weight	7.7 oz.	7.7 oz.	7.7 oz.	7.7 oz.	7.6 oz. w/ batteries	7.6 oz. w/ batteries
Audible Alarms	Anchor, Arrival, Clock, Off Course	Anchor, Arrival, Clock, Off Course	Anchor, Arrival, Off Course	Anchor, Arrival, Off Course	Anchor, Arrival, Clock, Off Course	Anchor, Arrival, Clock, Off Course
Waterproof Standard	IPX7	IPX7	IPX7	IPX7	IPX7	IPX7
Unit Dimensions	6.2 x 2.7 x 1.4	6.2 x 2.7 x 1.4	6.2 x 2.7 x 1.4	6.2 x 2.7 x 1.4	6.2 x 2.7 x 1.4	6.2 x 2.7 x 1.4
Thumb Stick (5-position cursor switch)	N/A	N/A	N/A	N/A	N/A	N/A
Separate Serial & USB interfaces	N/A	N/A	N/A	N/A	Yes	Yes
Map Storage	Internal Memory (POI only)	Internal Memory (POI only)	Internal Memory	Internal Memory	Removable microSD data card	Removable microSD data card
Backlit Display	Single Level	Single Level	Single level	Single level	Multi-level adjustable	Multi-level adjustable
Ext. Ant. Hookup	No	Yes	Yes	Yes	Yes	Yes
Internal Differential	N/A	N/A	N/A	N/A	N/A	N/A
WAAS/EGNOS capability	Yes	Yes	Yes	Yes	Yes	Yes
Loran TD position format	Yes	Yes	Yes	Yes	Yes	Yes
MGRS position format	Yes	Yes	Yes	Yes	Yes	Yes
Glide Ratio, Glide Ratio to Destination, and Vertical Speed to Destination	N/A	N/A	N/A	Yes	N/A	Yes
Built-in Electronic Compass	N/A	N/A	N/A	Yes	N/A	Yes
Built-in Barometric Altimeter	N/A	N/A	N/A	Yes	N/A	Yes
Turn by turn routing	N/A	N/A	N/A	N/A	Yes	Yes
Hunting/Fishing calculator	Yes	Yes	Yes	Yes	Yes	Yes
Celestial Information Page	Yes	Yes	Yes	Yes	Yes	Yes
Proximity Waypoints	Yes	Yes	Yes	Yes	Yes	Yes
Tide Prediction	Yes	Yes	Yes	Yes	Yes	Yes
Voltage Range	8-35	10-40	10-40	10-40	8-36	8-36
Waypoint Icons	Yes	Yes	Yes	Yes	Yes	Yes
NMEA compatible	Yes	Yes	Yes	Yes	Yes	Yes
	Product information on p28	Product information on p28	Product information on p28	Product information on p28	Product information on p29	Product information on p29

BlueChart



	Traditional	g2	g2 Vision
Port Plan Charts	•	•	•
Spot Soundings	•	•	•
Marine Services	•	•	•
Wrecks and Obstructions	•	•	•
Intertidal zones	•	•	•
Obstructions	•	•	•
Restricted Areas	•	•	•
Nautical Nav aids	•	•	•
Restricted Areas	•	•	•
Anchorage	•	•	•
Harbour Limits	•	•	•
Depths Contours	•	•	•
Tidal Stations	•	•	•
Detailed Roads	•	•	•
Aerial Photos	•	•	•
Business POIs	•	•	•
Mariner View	•	•	•
Large Cards	•	•	•
Current Information	•	•	•
Mariner's Eye 3D	•	•	•
Satellite Imagery	•	•	•
Auto Guidance	•	•	•
Fish Eye View	•	•	•
Tidal Gauge	•	•	•
Current Tidal Stream Arrow	•	•	•
Fishing Contours	•	•	•
Flashing Nav aids (only on Mariner's Eye 3D)	•	•	•
CHARTPLOTTER COMPATIBILITY			
GPSMAP 182, 188, 192, 198, 172, 178	•	•	•
292, 298, 2000 series, 3000 series	•	•	•
60iC/C5X/C5SX, 76C/C5X	•	•	•
GPSMAP 276, 278, 292, 298	•	•	•
2106, 3000 series	•	•	•
GPSMAP 4XX, 5XX, 4XXX, 5XXX series	•	•	•
MEDIA FORMATS			
CD-ROMS	•	•	•
Garmin Data Cards	•	•	•
Pre-programmed microSD/SD	•	•	•

Marine Instruments



Type	Colour Multi Function Instrument
Unit dimensions	WxHxD: 4.3" x 4.4" x 1.9" (109 x 111 x 48 mm)
Display resolution	320 x 240 pixels
Display type	Sunlight readable Color QVGA display
NMEA ports	NMEA 0183 and NMEA 2000
Waterproof	yes (IPX7)
Audible alarms	yes
Flush mountable	yes
Auto-on	yes

Product information on p16

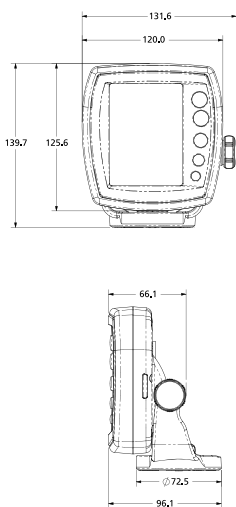


Fishfinders

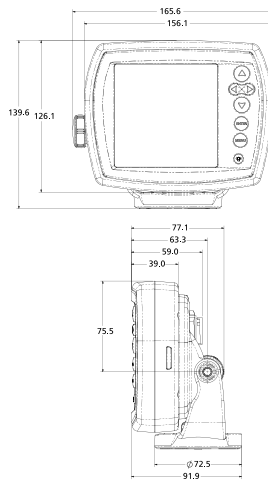


	Fishfinder 90	Fishfinder 140	Fishfinder 160C	Fishfinder 300C	Fishfinder 400C
Unit Dimensions	4.72" W x 4.94" H x 2.43" D	6.1" W x 4.9" H x 2.6" D	6.1" W x 4.9" H x 2.9" D	4.5" W x 4.5" H x 2.4" D	5.7" W x 5.0" H x 2.9" D
Display Size	4.0" diag (102mm)	4.7" diag (119mm)	4.5" diag (114mm)	3.5" diag (89mm)	4.0" diag (102mm)
Display Type	Black and White FSTN Display	4 level Grayscale FSTN	16 level Colour CSTN	256 Colour QVGA Sunlight Readable	256 colour QVGA, Sunlight Readable
Display Resolution	64 x 128	240 x 128	128 x 128	240 x 320	240 x 320
Fish Alarms	YES	YES	YES	YES	YES
Shallow/Deep Water Alarm	YES	YES	YES	YES	YES
Waterproof Standard	IPX 7	IPX 7	IPX 7	IPX 7	IPX 7
Whiteline	YES	YES	YES	YES	YES
Backlit Display	YES	YES	YES	YES	YES
UltraScroll high-req-rate sonar	YES	YES	YES	YES	YES
Dual Frequency Sonar	N/A	N/A	N/A	NO	YES
Dual Beam Sonar	YES	YES	YES	YES	YES
AutoGain Technology	YES	YES	YES	YES	YES
Voltage Range	10-18	10-18	10-18	10-35	10-35
Maximum Depth (Sounders/Fishfinders)	600 ft.	600 ft.	900 ft.	900 ft.	1500 ft.
Fish Symbol ID	YES	YES	YES	YES	YES
Cone Angle (Sounders/Fishfinders)	14 or 45 deg (Dual Beam)	14 or 45 deg (Dual Beam)	14 or 45 deg (Dual Beam)	14 or 45 deg (Dual Beam)	14 or 45 deg (Dual Beam)
Depth Display	YES	YES	YES	YES	YES
Temperature Display (dependant on transducer)	YES	YES	YES	YES	YES
Speed Through Water (dependant on transducer)	NO	NO	YES	YES	YES
Depth Controlled Gain	N/A	N/A	N/A	YES	YES
See-Thru Technology	YES	YES	YES	YES	YES
Sonar Power Output (max)	100 W (RMS) 800 W (peak to peak)	100 W (RMS) 800 W (peak to peak)	150 W (RMS) 1200 W (peak to peak)	150 W (RMS) 1200 W (peak to peak)	500 W (RMS) 4000 W (peak to peak)
Split Screen Sonar/GPS	NO	NO	NO	NO	NO
Water Temperature log	YES	YES	YES	YES	YES
CANet Compatible	NO	NO	NO	NO	YES
NMEA Compatible (0183)	NO	NO	YES	YES (output)	YES
	Product information on p36	Product information on p36	Product information on p35	Product information on p34	Product information on p33

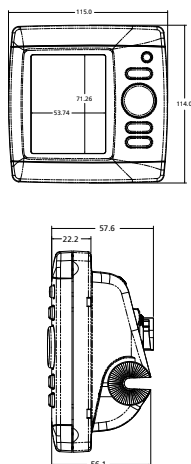
Fishfinder 90



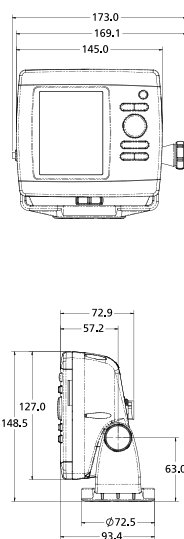
Fishfinder 140 / 160C



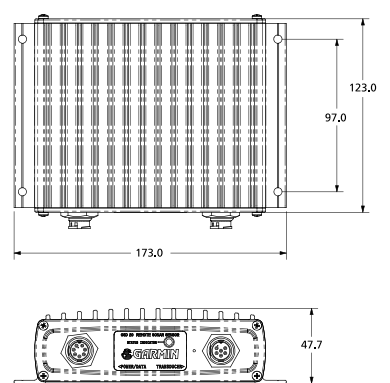
Fishfinder 300C



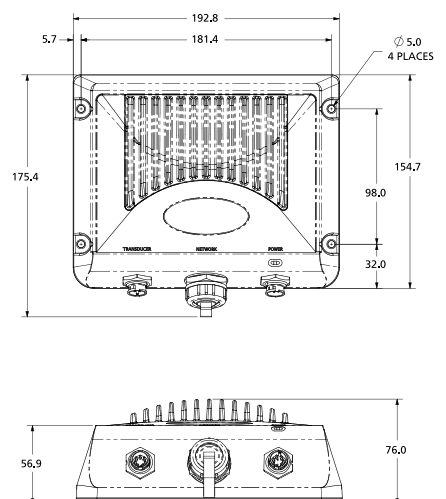
Fishfinder 400C



GSD 21



GSD 22



Sounders



	GSD 21	GSD 22
Sounder Type	Analogue	Digital
Unit Dimensions	1.88" H x 6.81" W x 4.84" D	2.99" H x 7.59" W x 6.09" D
Backlit Display	n/a	n/a
Waterproof standard	IPX7	IPX7
UltraScroll	Yes	Yes
Compatible with Dual Frequency transducers	Yes	Yes
Dual Beam Sonar	Yes	Yes
Autogain Technology	Yes	Yes
Voltage Range	10-35VDC	10-35VDC
Max Depth	1500ft	5000ft
Frequency	50/200KHz, 80/200KHz	50/200KHz, 80/200KHz
Max Cone Angle Dual Frequency	45/10 degree	45/10 degree
Max Cone Angle Dual Beam (dependent on transducer)	45/14 degree	45/14 degree
Display Options	n/a	n/a
Depth Controlled Gain	Yes	Yes
See-Thru Compatible	Yes	Yes
Power Output (watts)	500w - Dual Frequency, 400w - Dual Beam	500-2000w RMS (depending on transducer)
Split Screen Zoom	n/a	n/a
CANet Compatible	Yes	Yes
Marine Network Compatible	No	Yes
NMEA Compatible	Yes	Yes
	Product information on p38	Product information on p38



Combo Units

Sounder spec in addition to Non 'S' version

	GPSmap 420s	GPSmap 520s	GPSmap 525s
Unit Dimensions	5.7" W x 5.0" H x 2.9" D	6.4" W x 5.9" H x 2.9" D	6.4" W x 5.9" H x 2.9" D
Display Size	4.0" diag (102mm)	5.0" diag (127mm)	5.0" diag (127mm)
Display Type	256+ colour QVGA, Sunlight Readable	256+ colour QVGA, Sunlight Readable	256+ colour VGA Sunlight Readable
Display Resolution	240 x 320	240 x 320	640 x 480
Fish Alarms	YES	YES	YES
Shallow/Deep Water Alarm	YES	YES	YES
Waterproof Standard	IPX 7	IPX 7	IPX 7
Whiteline	YES	YES	YES
Backlit Display	YES	YES	YES
UltraScroll high-rep-rate sonar	YES	YES	YES
Dual Frequency Sonar	YES	YES	YES
Dual Beam Sonar	YES	YES	YES
AutoGain Technology	YES	YES	YES
Voltage Range	10-35	10-35	10-35
Maximum Depth (Sounders/Fishfinders)	1500 ft.	1500ft	2000 ft.
Fish Symbol ID	YES	YES	YES
Cone Angle (Sounders/Fishfinders)	14 or 45 deg (Dual Beam)	14 or 45 deg (Dual Beam)	14 or 45 deg (Dual Beam)
Depth Display	YES	YES	YES
Temperature Display (dependant on transducer)	YES	YES	YES
Speed Through Water (dependant on transducer)	YES	YES	YES
Depth Controlled Gain	YES	YES	YES
See-Thru Technology	YES	YES	YES
Sonar Power Output (max)	500 W (RMS) 4000 W (peak to peak)	500 W (RMS) 4000 W (peak to peak)	1000 W (RMS) 8000 W (peak to peak)
Split Screen Sonar/GPS	YES	YES	YES
Water Temperature log	YES	YES	YES
CANet Compatible	YES	YES	YES
NMEA Compatible (0183)	YES	YES	YES

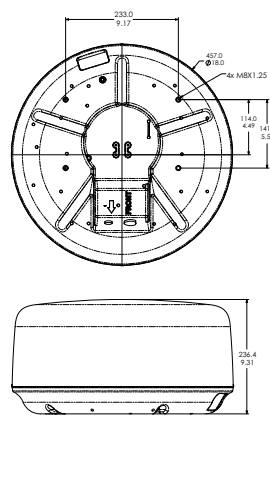


Product information on p22

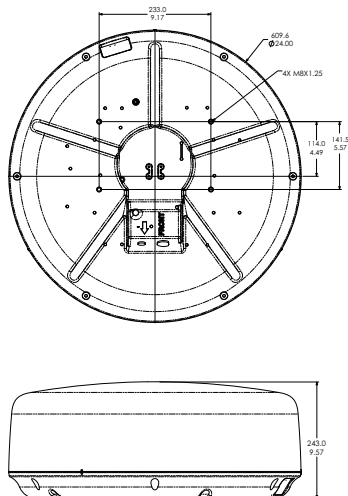
Product information on p23

Product information on p24

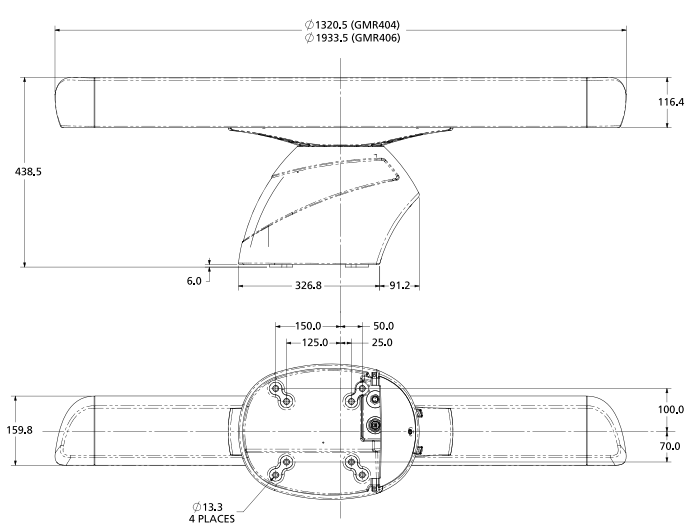
GMR 18HD



GMR 24HD



GMR 404 / 406



Radars

	GMR 18HD	GMR 24HD	GMR 404	GMR 406
Power Output	4 kW	4kW	4kW	4kW
Maximum/Minimum Range	36nm/20m	48nm/20m	72nm/20m	72nm/20m
RPM	24/30	24/30	24/48	24/48
Dimensions	18" Diameter, 8.9" High	24" Diameter Radome, 9.8" High	48" Open Array	72" Open Array
Weight	7.17kg	9.1kg	24.49kg (inc pedestal)	26.31kg (inc pedestal)
Beam Width Horizontal	5°	3.6°	1.8°	1.18°
Beam Width Vertical	25°	25°	25°	25°
Waterproof	IPX 7	IPX 7	IPX 6	IPX 6
Zoom Mode	2x and 4x	2x and 4x	2x and 4x	2x and 4x
Power Input	10.5-35 Vdc	10.5-35 Vdc	10.5-38 Vdc	10.5-38Vdc
Power Consumption (Typical)	33.5W	33.5W	45W	45W
Power Consumption (Stand by)	12W	12W	18W	18W
Operation temperature Range	-15° c to 60° c	-15° c to 60° c	-10° c to 60° c	-10° c to 60° c
Range Ring Accuracy	20m +/- 1.5% of range scales (whichever is greater - 1')	20m +/- 1.5% of range scales (whichever is greater - 1')	20m +/- 1.5% of range scales (whichever is greater - 1')	20m +/- 1.5% of range scales (whichever is greater - 1')
Guard Zone Alarms	2 Zones	2 Zones	2 Zones	2 Zones
Cable Length (m)	15	15	15	15
Humidity	up to 90%	up to 90%	up to 95%	up to 95%
Polarisation	Horizontal	Horizontal	Horizontal	Horizontal
Trail options	Short, Medium & Long	Short, Medium & Long	Short, Medium & Long	Short, Medium & Long
Look ahead function	Auto & Manual	Auto & Manual	Auto & Manual	Auto & Manual

Product information on p12

Product information on p12

Product information on p14

Product information on p14

Accessories

Handhelds



- 010-00364-01 **Foretrex 101**
- 010-00361-03 **Foretrex 201**
- 010-10482-00 Handlebar mount bracket
- 010-10557-00 Velcro Wrist & Expand strap
- 010-10484-00 PC Interface Cable
- 010-10496-00 Large Diameter - Requires relevant Bike Mount
- 010-10446-00 Handlebar mount bracket (201 only)
- 010-10543-00 Velcro strap extension (201 only)
- 010-10483-02 Euro A/C Adapter (201 only)
- 010-10595-00 12 volt charger (Cigarette lighter adapter) (201 only)
- 010-10615-00 Quick release mounting kit (201 only)



- 010-00631-00 **eTrex H**
- 010-00629-01 **eTrex Legend HCx, International basemap**
- 010-00630-01 **eTrex Vista HCx, International basemap**
- 010-10564-01 Auto Navigation Kit - portable mount, bracket and remote 12v cigarette lighter adapter (X-series only)
- 010-10563-00 12-volt charger (Cigarette lighter adapter) (X-series only)
- 010-10477-03 PC/USB cable (replacement) (X-series only)
- 010-10267-00 Handlebar mounting bracket
- 010-10274-00 Automotive mounting bracket
- 010-10306-00 Portable friction mount requires
- 010-10354-00 Marine Mount
- 010-10361-00 Automotive windshield mounting bracket
- 010-10481-00 Carabiner button clip
- 010-10203-00 Cigarette lighter adapter - not applicable to Geko 101
- 010-10205-00 Data cable (bare data wires) - not applicable to Geko 101
- 010-10206-00 PC interface cable (RS232 serial port connector) - not applicable to Geko 101
- 010-10310-00 USB to RS232 converter cable (requires appropriate PC cable)
- 010-10268-00 PC interface cable with cigarette lighter adapter
- 010-10323-02 Rechargeable NiMH AA battery kit (4 x 1600mA cells + quick charger)
- 010-10374-00 NiMH Cells, AA, 4-pack
- 010-10314-00 Carry case
- 010-10349-00 Belt clip
- 010-10480-00 Carabiner stretch holster
- 010-10496-00 Large Diameter - Requires relevant Bike Mount



- 010-00309-11 **GPS 72, International Marine Point Database**
- 010-00309-15 **GPS 72 Pack, unit with marine mount and carry case**
- 010-00244-02 **GPS 76, International Marine Point Database**
- 010-00249-11 **GPSMAP 76, International Basemap**
- 010-00271-10 **GPSmap 76S, International Basemap**
- 010-00468-01 **GPSmap 76CX, International Basemap**
- 010-00469-01 **GPSmap 76CSX, International Basemap**
- 010-10509-01 Automotive navigation accessory pack, European (X-series only)
- 010-10477-03 PC/USB cable (replacement) (X-series only)
- 010-10277-02 UK A/C PC adapter
- 362-00018-01 Euro A/C adapter, 10 to 40v
- 010-10121-00 MCX to BNC adapter cable
- 010-10157-00 8ft (~2.5m) Extension cable for GA 27 series antenna
- 010-10199-02 Dash mount base
- 010-10300-00 Marine mount
- 010-10305-00 Automotive mounting bracket
- 010-10305-01 Handlebar mounting bracket
- 010-10306-00 Portable friction mount requires
- 010-10352-00 Universal friction mounting adapter
- 010-10353-00 Universal adhesive mounting adapter
- 010-10082-00 Power/data cable (bare wires)
- 010-10086-00 Data cable (bare data wires)
- 010-10085-00 Cigarette lighter adapter
- 010-10141-00 PC Interface Cable(RS232 serial port connector)
- 010-10142-00 Data transfer cable (unit to unit)
- 010-10165-00 PC interface cable with cigarette lighter adapter
- 010-10310-00 USB to RS232 converter cable (requires appropriate PC cable)
- 010-10323-02 Rechargeable NiMH AA battery kit (4 x 1600mA cells + quick charger)
- 010-10374-00 NiMH Cells, AA, 4-pack
- 010-10117-02 Carry case (Black nylon with zipper)
- 010-10496-00 Large Diameter - Requires relevant Bike Mount
- 010-10702-00 GA 25 MCX low profile GPS antenna

Handhelds



- 010-00322-51 **GPS 60**
- 010-00322-54 **GPS 60 Marine Pack**
- 010-00322-53 **GPSmap 60, International Basemap**
- 010-00421-01 **GPSmap 60CX, International Basemap**
- 010-00422-01 **GPSmap 60CSX, International Basemap**
- 010-10458-01 Automotive navigation accessory pack, European (X-series only)
- 010-10277-02 UK A/C PC adapter
- 362-00018-01 Euro A/C adapter, 10 to 40v
- 010-10121-00 MCX to BNC adapter cable
- 010-10157-00 8ft (~2.5m) Extension cable for GA 27 series antenna
- 010-10454-00 Handlebar mounting bracket
- 010-10455-00 Marine mount
- 010-10456-00 Automotive mounting bracket
- 010-10457-00 Automotive windshield mounting bracket
- 010-10082-00 Power/data cable (bare wires)
- 010-10086-00 Data cable (bare data wires)
- 010-10085-00 Cigarette lighter adapter
- 010-10141-00 PC Interface Cable (RS232 serial port connector)
- 010-10142-00 Data transfer cable (unit to unit)
- 010-10165-00 PC interface cable with cigarette lighter adapter
- 010-10310-00 USB to RS232 converter cable (requires appropriate PC cable)
- 010-10477-03 PC/USB cable (replacement) (X-series only)
- 010-10323-02 Rechargeable NiMH AA battery kit (4 x 1600mA cells + quick charger)
- 010-10374-00 NiMH Cells, AA, 4-pack
- 010-10117-02 Carry case (Black nylon with zipper)
- 010-10578-00 Carry case
- 010-10380-00 Belt clip & button (replacement)
- 010-10481-00 Carabiner button clip
- 010-10496-00 Large Diameter - Requires relevant Bike Mount
- 010-10702-00 GA 25 MCX low profile GPS antenna

Portable Chartplotters



- 010-00331-51 **GPSmap 276C, European basemap**
- 010-00569-00 **GPSmap 278, Preloaded European street mapping**
- 010-10510-01 Automotive navigation accessory pack, European (128MB)
- 010-10510-03 Automotive navigation accessory pack, European (256MB)
- 010-10052-04 GA 26C Low profile antenna, BNC connector with magnetic and suction mounts
- 010-00174-03 GA 29 remote GPS antenna
- 011-00237-00 Handheld/portable antenna (replacement)
- 010-10144-00 Remote antenna mount, with 6ft (~1.8m) cable - GPS 128/152 only
- 010-10152-00 8ft. Extension cable for GA 26 series antenna
- 010-10511-00 Marine swivel mounting bracket (replacement)
- 010-10515-00 A/C Adaptor, worldwide (replacement)
- 010-10701-00 GA25 BN low profile GPS antenna
- 010-10513-00 Power/data cable, mini 9-pin to bare wires (replacement)
- 010-10512-00 Remote speaker, 12v to mini 9-pin
- 010-10514-00 PC data cable, mini 9-pin to PC 9-pin serial
- 010-10516-00 12v Adaptor cable to mini 9-pin
- 010-10477-03 PC/USB cable (replacement) (X-series only)
- 010-10226-10 16Mb data card
- 010-10226-11 32Mb data card
- 010-10226-12 64Mb data card
- 010-10226-13 128Mb data card
- 010-10226-14 256Mb data card
- 010-10226-05 512 Mb Garmin data card
- 010-10363-00 USB data card programmer
- 010-10231-01 Carry case
- 010-10492-00 Protective Cover
- 010-10517-00 Lithium ion battery pack (replacement)

Accessories

Fixed GPS



- 010-00515-20 **GPSmap 420**
- 010-00515-22 **GPSmap 420s with Transducer**
- 010-00174-03 GA 29 remote GPS antenna
- 010-10447-03 Watertight Flush Mount Kit
- 010-10920-00 Swivel Mount (replacement)
- 010-10917-00 Power/Data Cable 19-pin, (replacement)
- 010-10918-00 Power/Data/Xdcr Cable 19-pin, (replacement) (Sounders Only)
- 010-10911-00 Protective Cover (replacement)



- 010-00610-00 **GPSmap 520**
- 010-00611-01 **GPSmap 520s with Transducer**
- 010-00597-00 **GPSmap 525**
- 010-00598-01 **GPSmap 525s with Transducer**
- 010-00174-03 GA 29 remote GPS antenna
- 010-10447-05 Watertight Flush Mount Kit
- 010-10921-00 Swivel Mount (replacement)
- 010-10930-00 2nd Mounting Station
- 010-10917-00 Power/Data Cable 19-pin, (replacement)
- 010-10918-00 Power/Data/Xdcr Cable 19-pin, (replacement) (Sounders Only)
- 010-10912-00 Protective Cover (replacement)

MapSource BlueChart



- 010-10317-00 **MapSource BlueChart Americas - with Certificate for 1 region unlock**
- 010-10318-00 **MapSource BlueChart Atlantic - with Certificate for 1 region unlock**
- 010-10318-01 **MapSource BlueChart Atlantic (SMALL) - with Certificate for 1 region unlock**
- 010-10319-00 **MapSource BlueChart Pacific - with Certificate for 1 region unlock**
- 010-10321-00 **Additional unlock certificate for 1 BlueChart Atlantic region**

- Pre-programmed Blue Charts / Small Pre-programmed Charts / Regular Pre-programmed Charts
- Blue Chart on micro SD cards / Small Pre-programmed Charts / Regular Pre-programmed Charts
- Pre-programmed g2 Charts / Small Pre-programmed Charts / Regular Pre-programmed Charts / Large Pre-programmed Charts
- Pre-programmed g2 Vision Charts / Small Pre-programmed Charts / Regular Pre-programmed Charts / Large Pre-programmed Charts

Fishfinders



- 010-00459-04 **Fishfinder 90, dual beam transducer**
- 010-00459-03 **Fishfinder 90 Portable, dual beam transducer**
- 010-00460-04 **Fishfinder 140, dual beam transducer**
- 010-00460-03 **Fishfinder 140 Portable, dual beam transducer**
- 010-00403-04 **Fishfinder 160c, dual beam transducer**
- 010-00403-03 **Fishfinder 160c Portable, dual beam transducer**
- 010-10440-00 Marine swivel mounting bracket (replacement) - FF 90 & 80
- 010-10440-01 Marine swivel mounting bracket (replacement) - FF 160c, 140 & 120
- 010-10447-00 Flush mount kit - FF 90 & 80
- 010-10447-01 Flush mount kit - FF 160c, 140 & 120
- 010-10435-00 Transducer, 200Khz, 20deg, plastic, transom/trolling motor mount, depth, temp (replacement) - FF90/80/140/120/160c
- 010-10254-00 Portable carrying case (includes 010-10253-00 and eight D-cell battery holder)
- 010-10434-00 Protective cover - FF 90 & 80
- 010-10437-00 Protective cover - FF 160c, 140 & 120



- 010-00682-01 **FF300**
- 010-11004-00 Bail Mount FF300 (Replacement)
- 010-11005-00 Protective Cover FF300
- 010-11068-00 Top and bottom snap covers FF300 (Replacements)
- 010-11069-00 Flush Mount gasket FF300 (Replacement)

- 010-00510-03 **Fishfinder 400c w/o Transducer**
- 010-00510-04 **Fishfinder 400c with Dual Beam Transducer**
- 010-00510-05 **Fishfinder 400c with Dual Frequency Transducer**
- 010-10447-03 Watertight Flush Mount Kit
- 010-10920-00 Swivel Mount (replacement)
- 010-10918-00 Power/Data/Xdcr Cable 19-pin, (Replacement) (Sounders Only)
- 010-10911-00 Protective Cover (replacement)

Garmin Marine Network



- 010-00402-00 **GPSmap 3005C, Worldwide basemap, inc GPS 17HVS**
- 010-00348-00 **GPSmap 3006C, Worldwide basemap, inc GPS 17HVS**
- 010-00350-00 **GPSmap 3010C, Worldwide basemap, inc GPS 17HVS**
- 010-00242-53 GPS 17HVS low profile remote sensor, with 30ft (-9.2m) cable (replacement)
- 010-10312-00 2nd Mounting station, GPSMAP 2010/3010
- 010-10313-00 Power/data cable (bare wires)
- 010-10226-10 16Mb data card
- 010-10226-11 32Mb data card
- 010-10226-12 64Mb data card
- 010-10226-13 128Mb data card
- 010-10226-14 256Mb data card
- 010-10226-05 512 Mb Garmin data card
- 010-10363-00 USB data card programmer



Accessories

Garmin Marine Network



- 010-00591-00 **GPSMAP 4008**
- 010-00690-00 **GPSMAP 4010 - DUE FEBRUARY**
- 010-00592-00 **GPSMAP 4012**
- 010-10878-00 RF Wireless Remote Control
- 010-11087-00 Right angle power cable
- 010-11088-00 Right angle NMEA 0183 cable
- 010-11089-00 Right angle NMEA 2000 cable
- 010-11090-00 Right angle RJ45 cable
- 010-11091-00 Right angle Audio/Visual Cable
- 010-11060-00 Top and bottom snap covers 4010 (Replacements)
- 010-11066-00 Flush Mount Gasket 4010
- 010-10928-00 2nd Mounting Station 4008
- 010-11065-00 2nd Mounting Station 4010
- 010-10928-01 2nd Mounting Station 4012
- 010-10817-02 Weather Cap, NMEA0183 Cable
- 010-10817-03 Weather Cap, Power/Data Cable
- 010-10817-04 Weather Cap, Network Cable
- 010-10922-00 Power Cable, 2 Wire (Replacement)
- 010-10923-01 NMEA0183 Cable, 19 wire (Replacement)
- 010-10924-00 Bail Mount 4008 (Replacement)
- 010-11064-00 Bail Mount 4010 (Replacement)
- 010-10925-00 Bail Mount 4012 (Replacement)
- 010-10913-00 Protective Cover 4008 (Replacement)
- 010-11058-00 Protective Cover 4010 (Replacement)
- 010-10914-00 Protective Cover 4012 (Replacement)



- 010-00593-00 **GPSMAP 5008**
- 010-00594-00 **GPSMAP 5012**
- 010-00692-00 **GPSMAP 5015 - DUE FEBRUARY**
- 010-00242-53 GPS 17HVS low profile remote sensor, with 30ft (-9.2m) cable (replacement)
- 010-10878-00 RF Wireless Remote Control
- 010-10879-00 RF Wireless Mouse
- 010-11087-00 Right angle power cable
- 010-11088-00 Right angle NMEA 0183 cable
- 010-11089-00 Right angle NMEA 2000 cable
- 010-11090-00 Right angle RJ45 cable
- 010-11091-00 Right angle Audio/Visual Cable
- 010-11062-00 Top and bottom snap covers 5015 (Replacements)
- 010-11067-00 Flush Mount Gasket 5015
- 010-10929-00 2nd Mounting Station 5008
- 010-10929-01 2nd Mounting Station 5012
- 010-10548-00 Audio/Video Cable (Replacement)
- K00-00303-00 Flush Mounting Hardware (Replacement)
- 010-10817-02 Weather Cap, NMEA0183 Cable
- 010-10817-03 Weather Cap, Power/Data Cable
- 010-10817-04 Weather Cap, Network Cable
- 010-10922-00 Power Cable, 2 Wire (Replacement)
- 010-10923-01 NMEA0183 Cable, 19 wire (Replacement)
- 010-10926-00 Bail Mount 5008 (Replacement)
- 010-10927-00 Bail Mount 5012 (Replacement)
- 010-10915-00 Protective Cover 5008 (Replacement)
- 010-10916-00 Protective Cover 5012 (Replacement)
- 010-11059-00 Protective Cover 5015 (Replacement)



- 010-00572-00 **GMR 18HD Radome**
- 010-00572-01 **GMR 24HD Radome**
- 010-00484-00 **GMR 404 Open Array antenna (pedestal also required)**
- 010-00484-01 **GMR 406 Open Array antenna (pedestal also required)**
- 010-00484-02 GMR pedestal
- 010-00351-00 GMS 10 Network Port Expander
- 010-10550-00 6ft (-1.9m) Marine network cable
- 010-10551-00 20ft (-6.1m) Marine network cable
- 010-10552-00 40ft (-12.2m) Marine network cable
- 010-10603-00 Marine network cable connector RJ45, 2-pack
- 010-10603-01 Marine network cable connector RJ45, 10-pack
- 010-10647-00 300ft Bulk, Marine network cable, RJ45
- 010-10647-01 500ft Bulk, Marine network cable, RJ45
- 010-00502-00 **GSD21 remote sounder - no transducer**
- 010-00397-00 **GSD22 Digital remote sounder - no transducer**
- 010-10439-00 30ft (-9.2m) Power/data cable (replacement)

Single frequency transducers

- 010-10435-00 Transducer, 200Khz, 20deg, plastic, transom/trolling motor mount, depth, temp (replacement) - FF90/80/140/120/160c
- 010-10105-00 Transducer, 200Khz, 20deg, plastic, transom mount, depth
- 010-10106-00 Transducer, 200Khz, 20deg, plastic, transom mount, depth, temp, speed
- 010-10107-00 Transducer, 200Khz, 12deg, bronze, thru-hull mount, depth
- 010-10249-00 Transducer, 200Khz, 20deg, plastic, transom/trolling motor mount, depth, temp (replaced 010-10118-00)
- 010-10119-00 Transducer, 200Khz, 12deg, plastic, thru-hull mount, depth
- 010-10200-00 Transducer, 200Khz, 14deg, plastic, trolling motot mount, depth, temp
- 010-10217-00 Transducer, 200Khz, 12deg, bronze, thru-hull mount, depth, temp
- 010-10218-00 Transducer, 200Khz, 12deg, plastic, thru-hull mount, depth, temp
- 010-10200-00 Transducer, 200Khz, 14deg, plastic, trolling motot mount, depth, temp
- 010-10224-00 Transducer, 200Khz, 14deg, plastic, in-hull mount, depth
- 010-10229-00 Transducer, 200Khz, 8deg, plastic, transom mount, depth, temp, speed
- 010-10225-00 Temperature probe
- 010-10253-00 Suction-cup transducer mounting adapter, used with 010-10105-00, 010-10249-00 & 010-10228-00
- 010-10279-01 Speed sensor, transom mount with Y cable (replaced 010-10252-00)

Dual frequency transducers

- 010-10182-00 Transducer, 200/50Khz, 15/45deg, bronze, thru-hull mount, depth
- 010-10183-01 Transducer, 200/50Khz, 15/45deg, bronze, thru-hull mount, depth, temp, speed (replaced 010-10183-00)
- 010-10192-01 Transducer, 200/50Khz, 14/45deg, plastic, transom mount, depth, temp, speed (replaced 010-10192-00)
- 010-10193-01 Transducer, 200/50Khz, 14/45deg, bronze, thru-hull mount (long stem), depth, temp, speed inc. fairing block (replaced 010-10193-00)
- 010-10194-00 Transducer, 200/50Khz, 14/45deg, plastic, thru-hull mount, depth
- 010-10327-00 Transducer, 200/50Khz, 14/45deg, plastic, adjustable, in-hull mount
- 010-10272-00 Transducer, 200/50Khz, 15/45deg, plastic, transom mount, depth, temp (replacement of 010-10171-00)
- 010-10445-00 Transducer, 200/50Khz, 6/19deg, 1KW, in-hull, depth, temp, mounting tank
- 010-10451-00 Transducer, 200/50Khz, 6/19deg, 1KW, bronze, thru-hull mount, depth, temp, inc fairing block
- 010-10365-00 Transducer, plastic, thru-hull mount, temp & speed only
- 010-10225-00 Temperature probe
- 010-10279-01 Speed sensor, transom mount with Y cable (replaced 010-10252-00)
- K00-00028-01 Transom mount transducer bracket
- K00-00028-08 Transom mount transducer bracket (standard with Blue series)



Instruments and Accessories

- 010-00687-00 **GMI 10 Colour Instrument**
- 010-00671-00 **GF5 10 Fuel Flow Sensor**
- 010-00694-00 **GPS 17x NMEA 0183**
- 010-00694-10 **GPS 17x NMEA 2000**
- 010-11082-00 GPS 17x Pole mount adaptor
- 010-11083-00 GPS 17x Surface mount adaptor
- 010-11084-00 GPS 17x Under deck mount adaptor
- 010-11070-00 Protective Cover GMI 10
- 010-11071-00 Top and Bottom snap covers
- 010-11073-00 Flush Mount gasket GMI 10
- 010-11074-00 7 Pin Power cable GMI 10
- 010-11075-00 NMEA 2000 to CANet adaptor
- 010-11076-00 NMEA 2000 Backbone Cable (2m)
- 010-11076-01 NMEA 2000 Backbone Cable (6m)
- 010-11076-02 NMEA 2000 Backbone Cable (10m)
- 010-11078-00 NMEA 2000 tee connector
- 010-11079-00 NMEA 2000 Power cable
- 010-11080-00 NMEA 2000 terminator, male
- 010-11081-00 NMEA 2000 terminator, female
- 010-11096-00 NMEA 2000 in-line terminator
- 010-11077-00 NMEA 2000 drop cable
- 010-11085-00 NMEA 0183 Power/Data cable (intelliducers)
- 010-00701-00 Garmin Intelliducer, Thru-Hull NMEA 2000 0-12deg deadrise
- 010-00701-01 Garmin Intelliducer, Thru-Hull NMEA 2000 13-24deg deadrise
- 010-00702-00 Garmin Intelliducer, Thru-Hull NMEA 0183 0-12deg deadrise
- 010-00702-01 Garmin Intelliducer, Thru-Hull NMEA 0183 13-24deg deadrise
- 010-00703-00 Garmin Intelliducer, Transom mount NMEA 2000
- 010-00704-00 Garmin Intelliducer, Transom mount NMEA 0183

MapSource products

- 010-10215-01 MapSource WorldMap - with Trip & Waypoint Manager
- 010-10215-02 MapSource USA Topo - 1:100,000 Scale
- 010-10215-04 MapSource Trip & Waypoint Manager
- 010-10448-00 MapSource USA TOPO 24K National Parks West
- 010-10449-00 MapSource USA TOPO 24K National Parks East
- 010-10450-00 MapSource USA TOPO 24K National Parks Central
- 010-10469-00 MapSource TOPO Canada
- 010-10730-00 MapSource TOPO Great Britain
- 010-10474-00 MapSource City Navigator North America - with Certificate for full unlock
- 010-10389-00 MapSource City Navigator Australia - with Certificate for full unlock
- 010-10560-00 MapSource City Navigator Middle East

Glossary



WAAS EGNOS enabled The Wide Area Augmentation System (WAAS) and European Geostationary Navigation Overlay Service (EGNOS) are networks comprised of satellites and ground stations that provide GPS signal corrections to enhance the reliability and accuracy of positioning data.



IEC 60529 IPX7 This is a European system of test specification standards for classifying the degrees of protection provided by the enclosures of electrical equipment. An IPX7 designation means the GPS case can withstand immersion in one metre of water for up to 30 minutes.



Sonar An echo sounding technology that uses ultrasonic sound waves to detect underwater objects. When a transmitted sound wave strikes the bottom, or a fish, or other submerged material, sound is reflected back to the transducer – and the time lapse between transmission and echo return is precisely measured to determine the depth of the object.



Radar compatible Chartplotter/MFDs in Garmin's GPSmap 3000, 4000 and 5000 series are able to double as plug-and-play radar displays via the Garmin Marine Network.



Video Chartplotters in Garmin's GPSmap 3000, 4000 and 5000 series are able to accept video feeds from DVD players, video cameras, etc, via composite video inputs on each unit. Displays can support live-cam security monitoring of various areas on the boat.



AIS (Automatic Identification System) AIS allows users to avoid collisions at sea by tracking the identification, position, course, speed, and other relevant data from nearby ships and Vessel Traffic Service (VTS) stations. Garmin units are compatible with AIS receivers via NMEA 0183 high-speed connections.



CANet A proprietary 1-megabit Controller Area Network bus that enables sounder information to be shared with, and controlled from, one or more compatible GPSmap chartplotters on the boat.



Touchscreen A Touchscreen is an input device that allows chartplotter users to select operating modes and functions onscreen by simply touching specific areas of the display.



1-Year Standard Warranty Product covered by a 1 year warranty, parts and labour return to manufacturer.



Network Capable Chartplotters and other devices which are network capable offer plug-and-play connectivity through the high-speed Garmin Marine Network.



Waypoints Waypoints are sets of coordinates that identify a point in physical space. For the purposes of GPS navigation, these coordinates include longitude and latitude, and sometimes altitude (particularly for air navigation). Waypoints can be stored in your GPS/Chartplotter's memory to create routes or enable return to any desired location.



Battery This icon indicates that the unit may be operated from self-contained battery power, either as its primary or secondary power source.



BlueChart Object-oriented marine detail cartography for earlier Garmin chartplotters. Shaded like paper charts, map detail includes spot soundings, intertidal zones, wrecks, port plans, anchorages and more.



BlueChart g2 With features beyond traditional BlueChart, BlueChart g2 provides a smoother presentation on the chartplotter screen. Integrated maps feature perspective views, improved IALA symbols and coastal roads – as well as points-of-interest data and aerial photos of ports, marinas, etc.



BlueChart g2 Vision Garmin's latest advance in marine cartography and technology, g2 Vision adds premium high-detail satellite map imagery with true 3D-view perspective, both above and below the waterline. Other features include Auto Guidance and real picture aerial reference photos.



VGA Output Video Graphics Array (or VGA) is a de facto industry standard for computer video graphics display interfaces, implying a resolution of 640 x 480 pixels. VGA Output allows chartplotter data to be shown on a larger external monitor, such as VGA-compatible plasma screens.



NMEA The U.S. based National Marine Electronics Association (NMEA) sets electrical and data transmission standards for communication between various marine electronic devices, such as depth finders, navigation instruments and GPS receivers.



2-Year Standard Warranty Product covered by a 2 year warranty, parts and labour return to manufacturer.

Standard Warranty

All Garmin marine products¹ are warranted to be free from defects in material or workmanship for two years from the date of purchase. Within this period, Garmin International, Inc. will, at its sole option, repair or replace any components which fail in normal use. Such repairs or replacement will be made at no charge to the customer for parts or labour, provided that the customer shall be responsible for any transportation cost. This warranty does not cover failures due to abuse, misuse, accident or unauthorised alterations or repairs. The warranties and remedies contained herein are exclusive and in lieu of all other warranties, whether express, implied or statutory, including any liability arising under any warranty of merchantability or fitness for a particular purpose, statutory or otherwise. This warranty gives you specific legal rights, which may vary from country to country. In no event shall Garmin be liable for any incidental, special, indirect or consequential damages, whether resulting from the use, misuse or inability to use the product or from defects in the product. Some countries do not allow the exclusion of incidental or consequential damages, so the above limitations may not apply to you. Garmin retains the exclusive right to repair or replace the product or offer a full refund of the purchase price at its sole discretion. Such remedy shall be your sole and exclusive remedy for any breach of warranty.

Onboard Warranty

In addition to the standard warranty some specific products² that are professionally installed are covered by a 2-year onboard warranty for parts and labour charges.

¹Handheld and semi portable GPS products are covered by a one year warranty.

²Contact your retailer for conditions and products covered under two year onboard warranty.

GARMIN™



Garmin Switzerland
Rte de Soleure 8
2072 St-Blaise
032 755 95 85
www.garmin.ch

M03-00157-00