

# WL500 On Board Wi-Fi Access System

10m LMR400  
antenna cable  
assembly  
included



**Access the internet through wi-fi on board  
with a range of up to 4 miles from local hotspots ....**

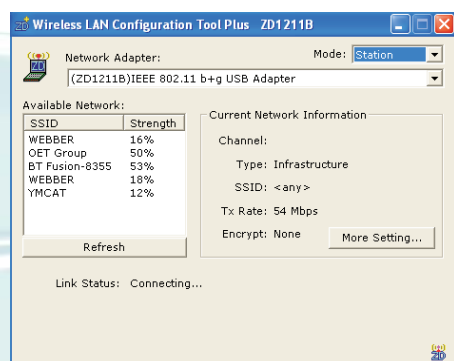
- Plug in external wi-fi system for your on board PC or notebook
- Two part solution with high gain external antenna, 10m low loss coax interconnect and powerful below deck processor incorporating a modem and amplifier
- Boosts range with powerful 500mW output and hi gain 8.15dBi antenna - giving up to 1W radiated power where authorised
- Up to 4 mile range from marina wi-fi hot-spots
- Plug and play setup automatically detects wi-fi points within range
- USB connection for easy installation
- Supplied with 10m antenna cable
- Supplied with antenna mounting base - 1" x 14TPI adaptors available
- DC powered
- 802.11b compliant -data rate up to 11Mbps
- Supplied with software
- Below deck modem-amplifier measures just 170x107x55mm and antenna just 895mm

**The WL500 boosts wi-fi range thanks to a powerful 500mW output and high gain marine antenna - and with a simple USB connection, it's compatible with notebook's and installed PCs**

The new WL500 allows boat owners to connect to wi-fi hot spots so that their on board PC's or equipment can connect to the internet. With internet connectivity installed, you can download the latest weather or chart updates as well as having a mobile office on board. Most harbours and ports have either free or subscription based services available.

The system has a compact, DC powered below deck mounted 500mW booster/modem and external, hi-gain (6dBd/8.15dBi/12dBm) antenna with 10m (33ft) low loss LMR400 coax interconnect cable. The antenna measures 0.9m (2.95ft) and can be supplied with deck, mast and industry standard 1" x 14TPI mountings. The modem connects to an on board PC through a regular USB connection with a plug 'n' play driver disk supplied for Windows XP, Vista & MAC operating systems. It supports 802.11b/g protocols as well as WEP and WPA encryption. The software will show a list of hot spots available and indicate if they are security enabled and their signal strength allowing you to select the most appropriate choice.

Even if your system already has wi-fi access, this can be disabled and you can take advantage of the superior range (and speed) that this system will offer.



Wi-Fi range depends on many local factors but Digital Yacht have seen ranges of up to 3-6 miles with this low cost system. In general, using an internal wi-fi adaptor typically found on a notebook, you'll be lucky to find the signal at the end of the dock so if you plan to access the internet whilst on board the WL500 could be the solution for you.

## Specifications

<b>CONNECTION:</b>	USB 1.1/2.0
<b>WIRELESS STANDARD:</b>	802.11B/G
<b>DATA RATE:</b>	Up to 54 Mbps
<b>VOLTAGE:</b>	10-16V DC From Ships Supply
<b>CURRENT:</b>	50-80mA
<b>TRANSMIT POWER:</b>	1000mW ERP
<b>RANGE:</b>	Typically 4 miles in line of site conditions
<b>SECURITY:</b>	64/128 bit WEP encryption
<b>ANTENNA:</b>	8dBi Omnidirectional 12 degree vertical beam width
<b>ANTENNA OVERALL LENGTH:</b>	895mm
<b>OPERATING SYS:</b>	Win XP/XP Pro/Vista/Mac
<b>MOUNTING:</b>	E179F Base supplied for deck fitting
<b>ANTENNA CABLE LENGTH:</b>	10M LMR400 cable with N types Consult us regarding cable extensions
<b>WARRANTY:</b>	Two years



Available from:

E&OE. Please consult local regulations prior to operation