

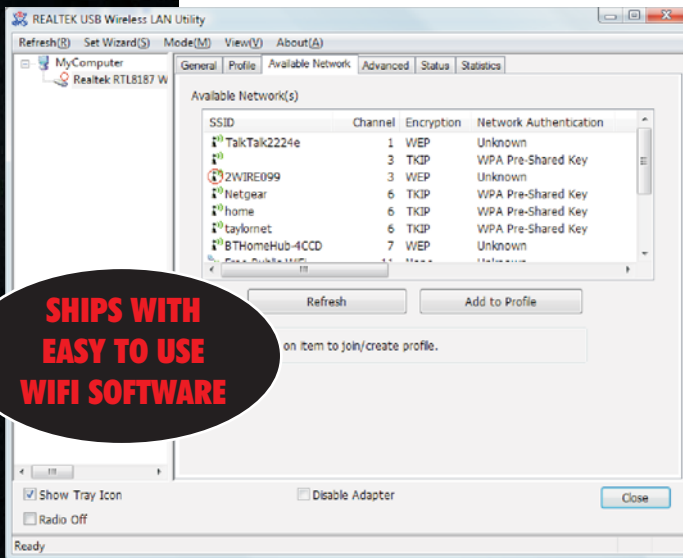
WL400 On Board Wi-Fi Access System

Access the internet through wi-fi on board with a range of up to 4 miles from local hotspots

The WL400 boosts wi-fi range thanks to a powerful 200mW internal modem and high gain marine antenna - and with a simple USB connection, it's compatible with notebook's and installed PCs

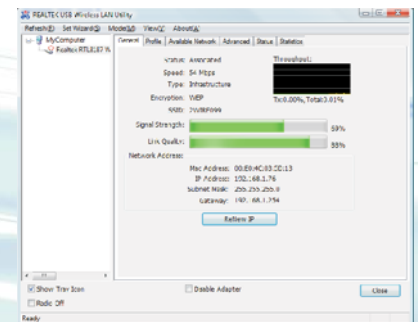
- **High quality antenna with simple USB plug 'n play connection**
- **Supplied with 5m cable**
- **Optional extensions available up to 20m**

- Plug in external wi-fi system for your on board PC or notebook
- Antenna houses powerful modem and features just a simple plug 'n play USB output
- Antenna measures just 109cm and ships with 5m USB cable - extensions available up to 20m
- Takes power from PCs USB socket
- Boosts range with powerful 200mW output and hi gain 8.15dBi antenna - giving up to 1000mW radiated power where authorised. Up to 4 mile range from marina wi-fi hot-spots
- Plug and play setup automatically detects wi-fi points within range with USB connection for easy installation
- Supplied with standard 1" x 14TPI threaded base suitable for fitting to wide range of mounts - rail, deck and mast available as options
- 802.11b/g compliant - data rate up to 54Mbps
- Supplied with drivers for Win XP, Vista, MAC and wifi viewing software



**SHIPS WITH
EASY TO USE
WIFI SOFTWARE**

- **High power, internal modem and booster built into antenna in rugged waterproof housing**
- **TWO year warranty**
- **Industry standard 1" x 14TPI threaded base - compatible with wide range of mounts**



The new WL400 allows boat owners to connect to wi-fi hot spots so that their on board PC's or equipment can connect to the internet. With internet connectivity installed, you can download the latest weather or chart updates as well as having a mobile office on board. Most harbours and ports have either free or subscription based services available.

It supports 802.11b/g protocols as well as WEP and WPA encryption. The software will show a list of hot spots available and indicate if they are security enabled and their signal strength allowing you to select the most appropriate choice. Even if your system already has wi-fi access, this can be disabled and you can take advantage of the superior range (and speed) that this system will offer. Wi-Fi range depends on many local factors but Digital Yacht have seen ranges of up to 3-4 miles with this low cost system. In general, using an internal wi-fi adaptor typically found on a notebook, you'll be lucky to find the signal at the end of the dock so if you plan to access the internet whilst on board the WL400 could be the solution for you.